

## Geography

*Eduqas*

*Subject Leader:*

*Mrs L Harris*

### Course structure and content

The Eduqas A Level course includes the following components:

<b>Component 1</b>	<b>Changing Landscapes:</b> Glacial Landscapes, Changing Places	<i>1hr 45min, 20.5% of A Level</i>
<b>Component 2</b>	<b>Global Systems and Global Governance:</b> Global Systems - Water Cycle, Carbon Cycle Global Governance - Change and Challenges, Processes and Patterns of Global Migration, Global Governance of the World's Oceans Challenges in 21st Century	<i>2hr, 27.5% of A Level</i>
<b>Component 3</b>	<b>Contemporary Themes in Geography:</b> Tectonic Hazards Ecosystems Energy Challenges and Dilemmas	<i>2hr 15min, 32% of A Level</i>
<b>Component 3</b>	<b>Independent Investigation</b> Independent investigation titles based on the collection of both field data and secondary information	<i>Not Examined, 20% of A Level</i>

### Entrance requirements

Automatic entry: Grade 6 or above in Geography GCSE and Grade 5 in Mathematics and English.

*Students not achieving these entrance requirements may on occasion be admitted by interview, based on academic performance, approach to learning and course suitability.*



## Course commitment

Across the two year course, students will be expected to undertake at least four days of geographical fieldwork so there will therefore be a residential visit which will need to be paid for. Further independent fieldwork may be undertaken as part of the independent investigation. Additional trips to various university taster sessions, masterclasses and exhibitions will also take place as opportunities arise throughout the year.

## Progression routes

Geography is a link between the sciences and the arts and is therefore suitable for all students.

It is a fantastic all-purpose A level which can be used in a variety of ways in higher education or employment. The diverse nature of the course has earned its respect amongst employers. Geography graduates are employed in a wide range of sectors, including the public sector, education, commerce, industry, transport and tourism. Geography graduates have excellent transferable skills, which also attract employers from the business, law and finance sectors.

## Further information

Your course teachers are Mr Baker and Mrs Harris who can be contacted on the number below.

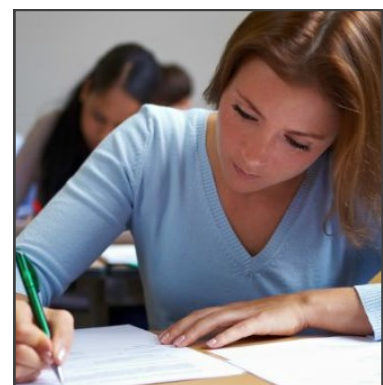
Further course details are available at [www.eduqas.co.uk](http://www.eduqas.co.uk).

## How to apply

You can download an application form by visiting the Sixth Form area of the school website at:

[www.waseleyhills.worcs.sch.uk](http://www.waseleyhills.worcs.sch.uk)

Otherwise, contact us direct on 0121 457 4767.



*November 2020*

Headteacher: Mr. A. Roll

School Road, Rubery, Birmingham B45 9EL

Tel: 0121 453 5211 Email: [office@waseleyhills.worcs.sch.uk](mailto:office@waseleyhills.worcs.sch.uk)

[www.waseleyhills.worcs.sch.uk](http://www.waseleyhills.worcs.sch.uk)