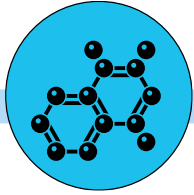


# Curriculum Overview

## Science

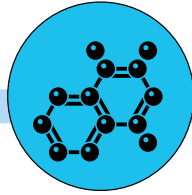
N



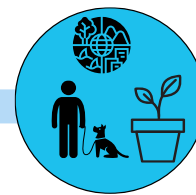
The Natural World: Materials



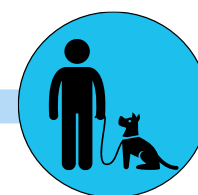
Seasonal Changes in Autumn/Winter



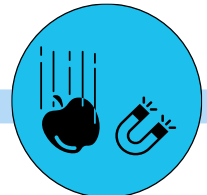
Materials



Seasonal Changes in Spring (Animal/Plant Life Cycles)



Animals

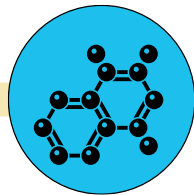


Forces

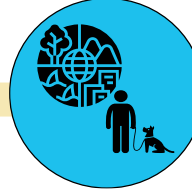
R



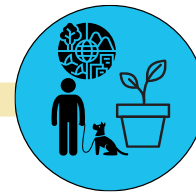
Seasonal Changes (Autumn)



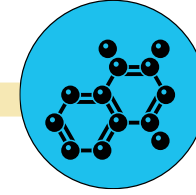
Materials— Changes of State



Seasonal Changes (Winter & Hibernation)



Seasonal Changes (Spring and Animal/Plant Life Cycles)



Materials



Animals and plants in different habitats

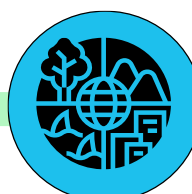
Y1



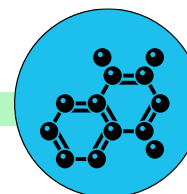
Animals Including Humans: Human Body & Senses



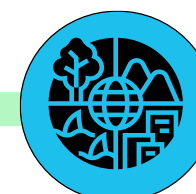
Animals Including Humans: Animal Groups



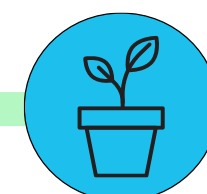
Seasonal Change: Autumn to Winter



Everyday Materials



Seasonal Change: Spring to Summer



Plants

Y2



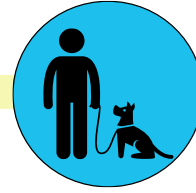
Living Things and Their Habitats



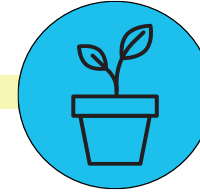
Living Things and Their Habitats



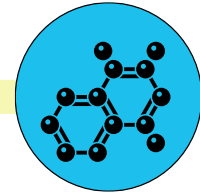
Animals Including Humans



Animals Including Humans



Plants



Uses of Everyday Materials

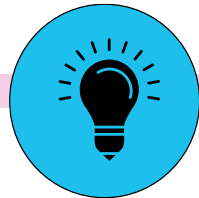
Y3



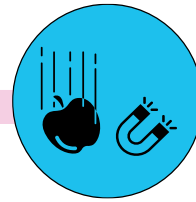
Animals Including Humans



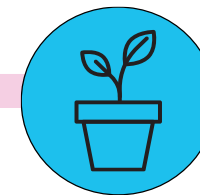
Animals Including Humans



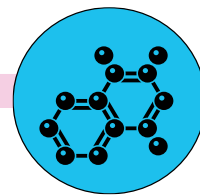
Light



Forces and Magnets

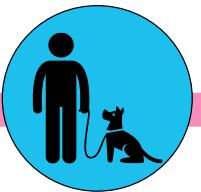


Plants

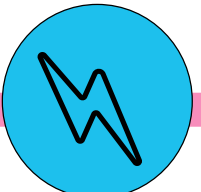


Rocks and Soils

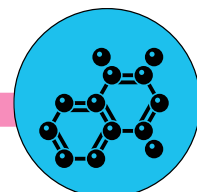
Y4



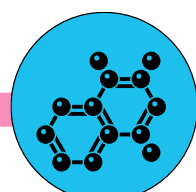
Animals Including Humans



Electricity: Circuits and Conductors



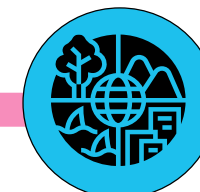
Changes of State



Changes of State

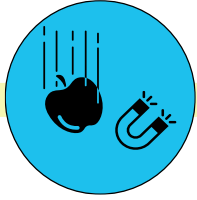


Sound



Living Things and Their Habitats

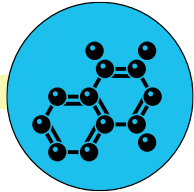
Y5



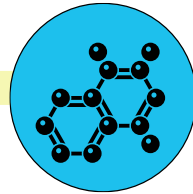
Forces



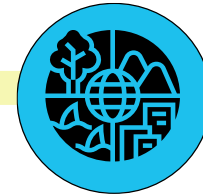
Earth and  
Space



Properties and  
Changes of  
Materials



Properties and  
Changes of  
Materials



Living Things and  
Their Habitats

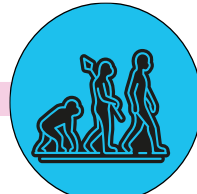


Animals Including  
Humans

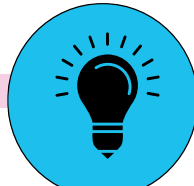
Y6



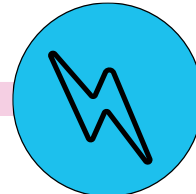
Animals Including  
Humans:  
Circulatory  
System



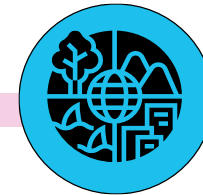
Evolution and  
Inheritance



Light



Electricity



Living Things and  
Their Habitats



Animals Including  
Humans: Diet  
and Exercise