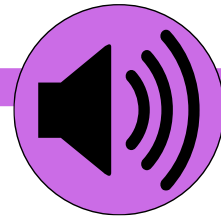
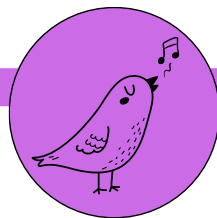
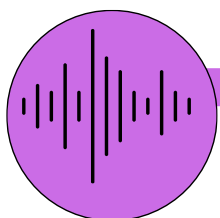


Music

SMSC



	FS	Year 1	Year 2	Year 3	Year 4	Year 5	Year 6
Half Term	Big Bear Funk	Having Fun with Improvisation	Exploring Improvisation	Enjoying Improvisation	Expression and Improvisation	Freedom to Improvise	Improvising with confidence
	Big Bear Funk transitions from being focus based to preparing for Year 1..	In this unit, we ask 'What Songs Can We Sing to Help Us Through the Day?' as an entry point for the broad Social Theme of 'Music Is a Friend, Guide and Support'. This is relevant to learning topics such as identity, motivation, sports, courage, comfort, feelings, psychology, values, loneliness, friendship and other topics as you, the teacher, see fit.	In this unit, we ask 'How Does Music Make Us Happy?' as an entry point for the broad Social Theme of 'Music Is a Friend, Guide and Support'. This is relevant to learning topics such as identity, motivation, sports, courage, comfort, feelings, psychology, values, loneliness, friendship and other topics as you, the teacher, see fit.	In this unit, we ask 'How Does Music Make a Difference to Us Every Day?' as an entry point for the broad Social Theme of 'Music Is a Friend, Guide and Support'. This is relevant to learning topics such as identity, motivation, sports, courage, comfort, feelings, psychology, values, loneliness, friendship and other topics as you, the teacher, see fit.	In this unit, we ask 'How Does Music Shape Our Way of Life?' as an entry point for the broad Social Theme of 'Music Is a Friend, Guide and Support'. This is relevant to learning topics such as identity, motivation, sports, courage, comfort, feelings, psychology, values, loneliness, friendship and other topics as you, the teacher, see fit.	In this unit, we ask 'How Does Music Shape Our Way of Life?' as an entry point for the broad Social Theme of 'Music Is a Friend, Guide and Support'. This is relevant to learning topics such as identity, motivation, sports, courage, comfort, feelings, psychology, values, loneliness, friendship and other topics as you, the teacher, see fit.	In this unit, we ask 'How Does Music Shape Our Way of Life?' as an entry point for the broad Social Theme of 'Music Is a Friend, Guide and Support'. This is relevant to learning topics such as identity, motivation, sports, courage, comfort, feelings, psychology, values, loneliness, friendship and other topics as you, the teacher, see fit.
SMSC Strand	Social	Spiritual	Spiritual	Spiritual	Spiritual	Spiritual	Spiritual
Half Tern	Reflect, Rewind and Replay	Let's Perform Together!	Our Big Concert	Opening Night	The Show Must Go On	Battle of the Bands!	Farewell Tour
	The final Unit for the year Reect, Rewind and Replay consolidates the year's learning.	In this unit, we ask 'How Does Music Teach Us About Looking After Our Planet?' as an entry point for the broad Social Theme of 'Music Is a Nature Lover and Guardian of the Earth'. This is relevant to learning topics such as nature, environment, animals, geography, biology, art, outdoor education, the Forest School, climate change, environmental justice and other topics as you, the teacher, see fit.	In this unit, we ask 'How Does Music Teach Us About Looking After Our Planet?' as an entry point for the broad Social Theme of 'Music Is a Nature Lover and Guardian of the Earth'. This is relevant to learning topics such as nature, environment, animals, geography, biology, art, outdoor education, the Forest School, climate change, environmental justice and other topics as you, the teacher, see fit.	In this unit, we ask 'How Does Music Connect Us with Our Planet?' as an entry point for the broad Social Theme of 'Music Is a Nature Lover and Guardian of the Earth'. This is relevant to learning topics such as nature, environment, animals, geography, biology, art, outdoor education, the Forest School, climate change, environmental justice and other topics as you, the teacher, see fit.	In this unit, we ask 'How Does Music Connect Us with the Environment?' as an entry point for the broad Social Theme of 'Music Is a Nature Lover and Guardian of the Earth'. This is relevant to learning topics such as nature, environment, animals, geography, biology, art, outdoor education, the Forest School, climate change, environmental justice and other topics as you, the teacher, see fit.	In this unit, we ask 'How Does Music Connect Us with the Environment?' as an entry point for the broad Social Theme of 'Music Is a Nature Lover and Guardian of the Earth'. This is relevant to learning topics such as nature, environment, animals, geography, biology, art, outdoor education, the Forest School, climate change, environmental justice and other topics as you, the teacher, see fit.	In this unit, we ask 'How Does Music Connect Us with the Environment?' as an entry point for the broad Social Theme of 'Music Is a Nature Lover and Guardian of the Earth'. This is relevant to learning topics such as nature, environment, animals, geography, biology, art, outdoor education, the Forest School, climate change, environmental justice and other topics as you, the teacher, see fit.
SMSC Strand	Social	Moral Cultural	Cultural Moral	Moral Cultural	Moral Cultural	Moral Cultural	Moral Cultural