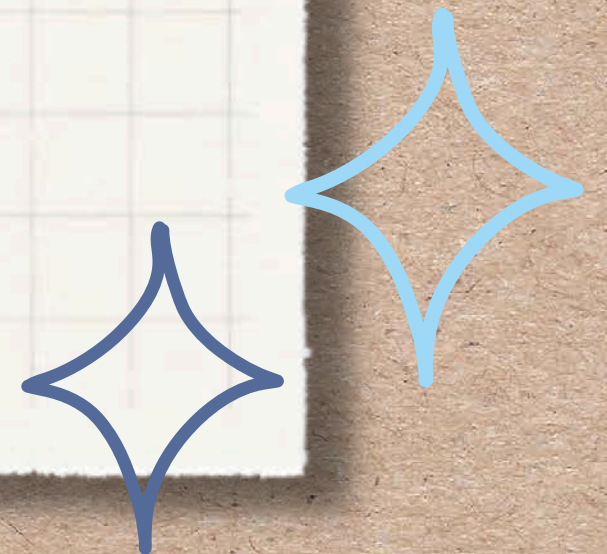


Welcome to

Welholme Academy

NURSERY



Our School



Our School Values



Welholme Academy is proud to be part of The Enquire Learning Trust and is strongly shaped by the values and ambitions of the Trust. At Welholme Academy we believe that everything is possible within a culture of collaboration, resilience, nurture and high aspirations.

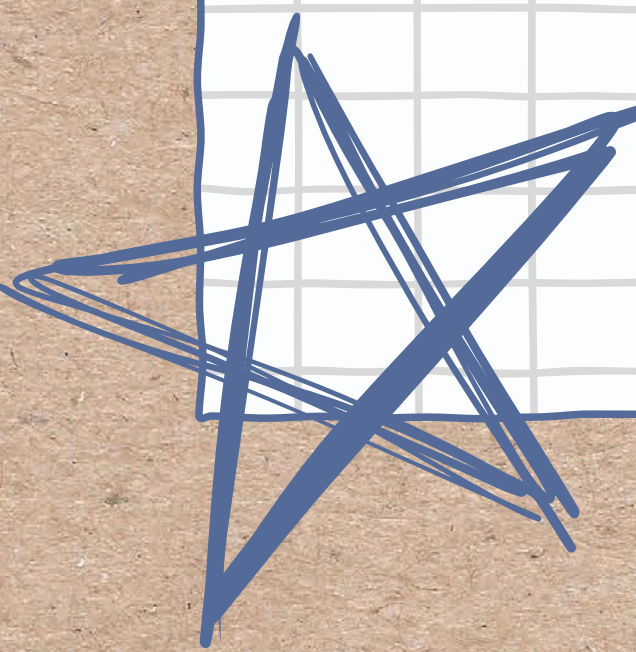


Welcome from Mr Chamberlain



We know that children learn best when parents and school work closely together and we value your support to ensure every child has the very best opportunity to succeed. We look forward to working with you.



Mr Chamberlain – Principal



Meet the team



Miss Douthwaite
Higher Level Teaching
Assistant



Mrs Evans
Teacher



Miss Stowers
Teaching Assistant



Miss Williams
Teaching Assistant



Mrs Lehman
Vice Principal
Early Years Lead



Our current team

Our School Day

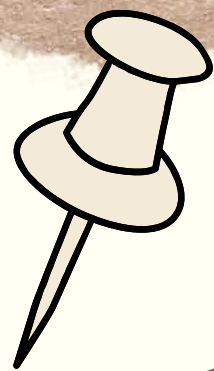
The morning session begins at 8.40am and ends at 11.40am.

The afternoon session begins at 12.30pm and ends at 15.30pm.

We also offer 30 hours provision for those eligible, there will be a charge for dinner time supervision.

We also offer paid top ups based on availability which will need to be booked and paid for in advance.



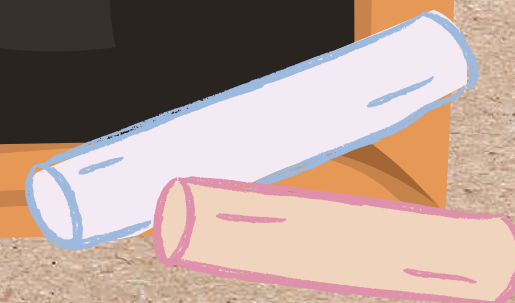


30 Hours Funding

All children age 3-4 are entitled to 15 hours free Nursery care. However, some working families are eligible to 30 hours funded places which we offer at Welholme Academy. Find out if you are eligible at www.childcarechoices.gov.uk

Enquire now about our 30 hours funded places for 3 and 4 year olds

TEL: 01472 329944



When can my child start Nursery?



Welholme Academy offer places for 2, 3 and 4 year olds.

2 year old's can start the term after their 2nd birthday.

3 year old's can start Nursery the term after their 3rd birthday.



Learning in Nursery

There are 7 key areas of learning for young children which will be developed in Reception. You can also help develop these areas at home!



Communication &
Language



Personal, Social &
Emotional Development



Maths



Expressive Arts &
Design



Physical Development

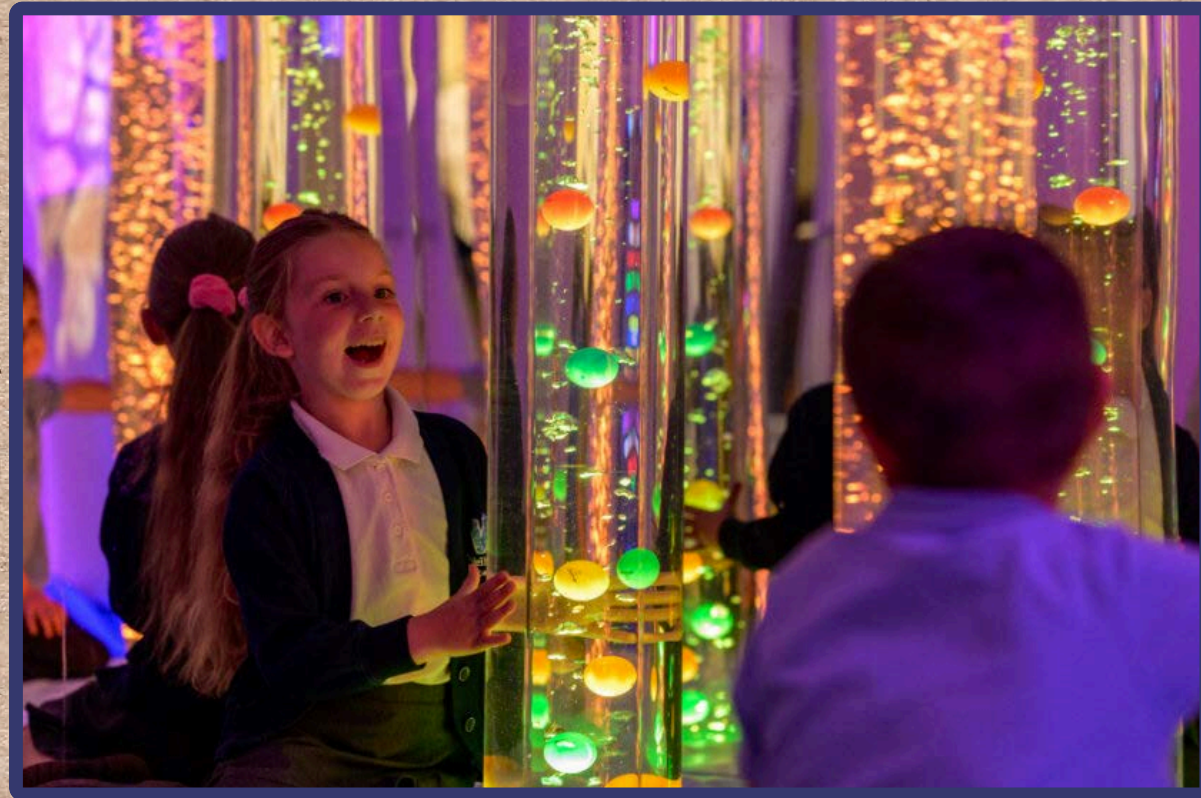


Literacy



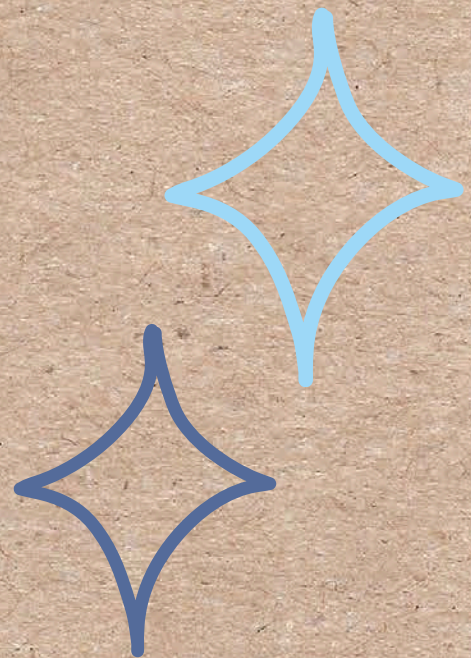
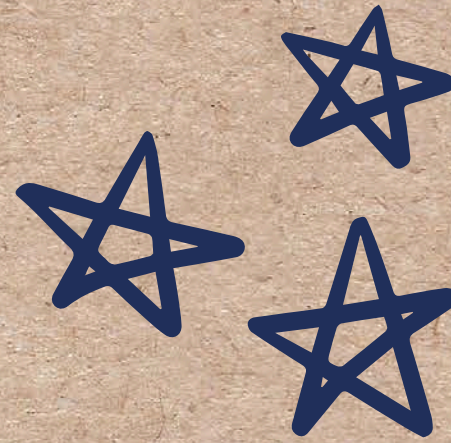
Understanding the
World

Indoor Environment





Outdoor Environment



School Uniform


In Nursery we often learn through play and sometimes that can get a little messy!

Our recommendation is that you dress your child in a white or blue school t-shirt, a navy cardigan or jumper and black or grey leggings, trousers or skirt, with plain black shoes.

Children will also need a coat for playing outside.



What can I do to prepare my child for Nursery?




Encourage independence

Encourage your child to independently go to the toilet and put on their shoes and coat. It's also a great idea to teach them how to ask an adult for help if they need it.


Develop their communication

Practise greetings, simple questions and have lots of conversations. Giving your child time to talk - and also time when they have to listen - teaches vital speaking and listening skills. Encourage your child to talk in full sentences.



Talk to your child about Nursery

Talk about what will happen and what to expect at school. You could encourage them play schools. Talk about how much fun Nursery is and all the things they have to look forward to! You could watch video clips such as Woolly and Tig - First Day at Nursery School on CBeebies.



Keeping in touch



We use a free app called Class Dojo which you can download on your smart phone. Through this app we share your child's learning, letters and updates. You can also message the staff on here too.



We post photos regularly on our school twitter (X) account @welholmeacademy. Follow us to see the learning that happens at our school.

The My Child at School free app is where lots of school information is shared such as attendance, payments, trips, clubs, school dinners and school reports.

