

SEND

Parent carer newsletter

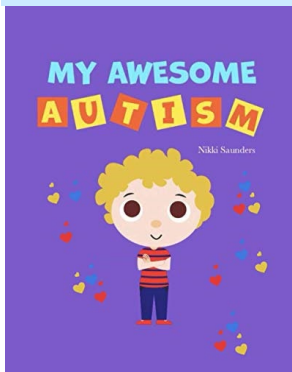
Monday, 21 – Sunday, 27 February 2022



This week:

- [World Book Day](#)
- [SEND Survey](#)
- [Limited places for successful SEND Internship Programme](#)
- [Sleep training. New dates](#)
- [Join the Autism in Schools parents' forum](#)
- [Infants and Primary Schools](#)
- [Secondary Schools](#)
- [Infants/ Primary and Secondary Schools](#)
- [Learn Makaton](#)
- [Nunny's Farm CIC](#)

World Book Day



Next week, Thursday, 3 March is World Book Day. #WorldBookDay.

Find out more about the campaign and what books you can get for free with your £1 book token. [World Book Day | World Book Day is a registered charity. Our mission is to give every child and young person a book of their own.- external site](#)

Our team have been inspired by the Autism in Schools project and have been busy planning a book club.

We have a great list of books relating to Autism Spectrum Disorder (ASD) and other neurodevelopmental needs.

There are books for children, young people, their siblings and peers, as well as parent carers.

We are excited to announce that copies of the books will be in the main local libraries.

The books will soon be at your local Lincs Inspire library in Grimsby, Cleethorpes, Immingham, and Waltham. There will be four pop-up events at these Libraries during Autism Acceptance Week which runs from Monday 28 March- Sunday 3 April.

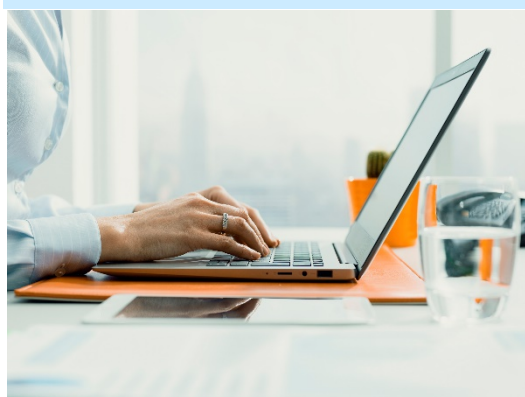
Read the full list of books that you can enjoy. [NELC SEND Local Offer | World Book Day and Autism in Schools books \(nelincs.gov.uk\)](#)

Here are other great links to recommended books for children and teenagers that explore these disability and special needs.

[Ten top books featuring disability | The Children's Trust \(thechildrenstrust.org.uk\)- external site](#)

[Waterstones | Disability books](#)

SEND Survey



More parent carers are taking the 2022 SEND Annual Survey.

This year, we hope to have more parent carers take the survey than ever before.

If you took it last year, you will have a year of new experiences to share.

We have also added a new section on SEND Banding that relates to funding for children with an Education Health and Care Plan (EHCP).

Help to shape the future of SEND in our borough. Take the survey now.

[Parents/Carers survey](#)

Ask your child to take the Children and young people survey

[Children and young people survey](#)

Limited places for successful SEND Internship Programme



Do you want to work? Have you enjoyed your education journey so far but now feel like you need a career to take you on and into your adult life?

Come and find out about DFN Project SEARCH – the biggest transition to work programme for young adults with a

learning disability or autism spectrum condition or both in the world!

Young adults are encouraged to learn more about DFN Project SEARCH at Diana Princess of Wales Hospital.

This is a world renowned, successful programme for people with SEND.

Parent carers and potential interns are encouraged to join an online session.

There are only a 8-10 places so make sure to join the session and put your name forward as soon as possible.

Join online Wednesday, 2 March at 2pm. [Join DFN Project SEARCH online on Zoom.](#)

Watch this uplifting video and see the interns fulfilling and varied roles, how they help others and are supported themselves, and the brilliant effect it has had on their wellbeing, self-esteem and more.

Please join us to learn more about DFN Project SEARCH and how it works as we start our exciting new programme based at Diana Princess of Wales Hospital and hosted by North Lincolnshire and Goole NHS Trust.

Sleep training. New dates



Remember to book your place on the sleep workshop for parent carers.

Learn how to use a sleep diary to understand your child's patterns and routines. Learn the science of sleep, like why we sleep and the impact on daily life.

Most importantly, learn that you're not alone and that issues with sleep affect many children. This is especially true for children and young people with SEND.

This is to help children and young people aged 1-19 to sleep or up to age 25 if they have an EHCP.

This is a free service for you as a parent carer because it is funded by transforming care partnership.

You can self-refer as long as your child has SEND. You can still book if your child is not diagnosed but is under some kind of assessment or has some involvement from a professional.

Sleep Workshop for parent carers

Saturday 5 and Saturday 12 March 2022 from 9.30am-11.30am

Tuesday 15 and 22 March 2022 ,10am-12pm

Friday 25 March and 1 April 2022, 10am-12pm

Tuesday 5 and 12 April 2022, 12pm-2pm

To book a place please email Claire.Earley@kids.org.uk

Find out more about services to help your child to sleep. [NELC SEND Local Offer | Social, emotional and mental health \(nelincs.gov.uk\)](#)

Join the Autism in Schools parents' forum



The next Autism in Schools Parent Forum dates have been planned. Parent carers meet during the forum to stay up-to-date and help to shape the offer. There is one forum every half term.

Infants and Primary Schools

Wybers Wood Primary Academy

Tuesday 22 March, 9:30-11:30am

Location to be confirmed

Tuesday 17 May, 1-2pm

Secondary Schools

Ormiston Academy

Tuesday 22 March, 1-2pm

Location to be confirmed

Tuesday 17 May, 1-2pm

Infants/ Primary and Secondary Schools

Grimsby Town Hall, Town Hall Square, DN31 31HU

Tuesday 5 July, 9:30am-1pm

Is your school involved? Learn more about Autism in Schools. [NELC SEND Local Offer | Autism in Schools \(nelincs.gov.uk\)](https://nelincs.gov.uk)

Learn Makaton



The Makaton Charity says: “Makaton is a unique language programme that uses symbols, signs and speech to enable people to communicate. It supports the development of essential communication skills such as attention and listening, comprehension, memory, recall and organisation of language and expression.”

Sarah works at a local Primary school and is eager to upskill more people in Makaton. She is holding Makaton taster sessions and Level 1 sessions for individuals and groups.

[Sarah Arthur – Makaton Tutor | Facebook](#)

There is also a database of accredited Makaton tutors which includes a tutor from a local Primary School.

[Find Training \(makaton.org\)](https://makaton.org)

Nunny's Farm CIC



Nunny's Farm CIC is a local petting farm and community-run business in Grimsby, offering a great day out for families and a number of fun activities.

Nunny's farm reopens Friday, 4 March, 2022 at 10am

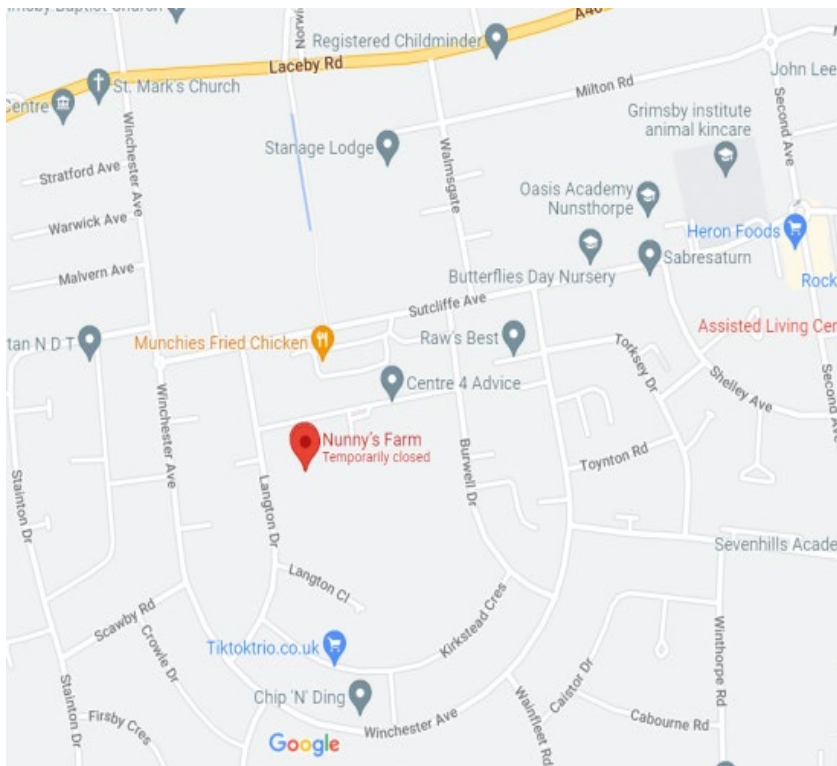
Being around animals can be a great experience for children with SEND.

They said that as a parents of a children with SEND, they know what a difference it makes to enjoy an activity that is inclusive, with staff and volunteers who are welcoming towards everyone.

There are Makaton signs on the animal's enclosure, activities for all abilities, and the staff have a variety of SEND training and experience.

They said: "We want people to feel welcomed and at ease here. This is the same for both the children and the parents.

"We encourage parents to get in touch to find out what's on. If they need to have a conversation with us about their child's needs and how we can



accommodate them, please feel free to give us a call."

There is a toilet and picnic area as well as our tearoom called 'The Veg Box' that sells light refreshments.

Drive into Centre4 to park and find Nunny's farm at the back. It is pushchair and wheelchair accessible, mostly grass paths with a short gravel entrance.

If you have questions about SEND we are always here to help. Please don't hesitate to email sen@nelincs.gov.uk. We always try to make sure that children and parents/ carers voices are heard.

These Weekly SEND parent/carer newsletters are shared with teams within education, health and social care as well as parents/carers SENCOs, the DfE and local charities.

If parents/carers or young people over 16 do not have access to the internet or if they prefer to receive paper copies only please contact sen@nelincs.gov.uk.

