



YEAR 10 FINE ART GALLERY

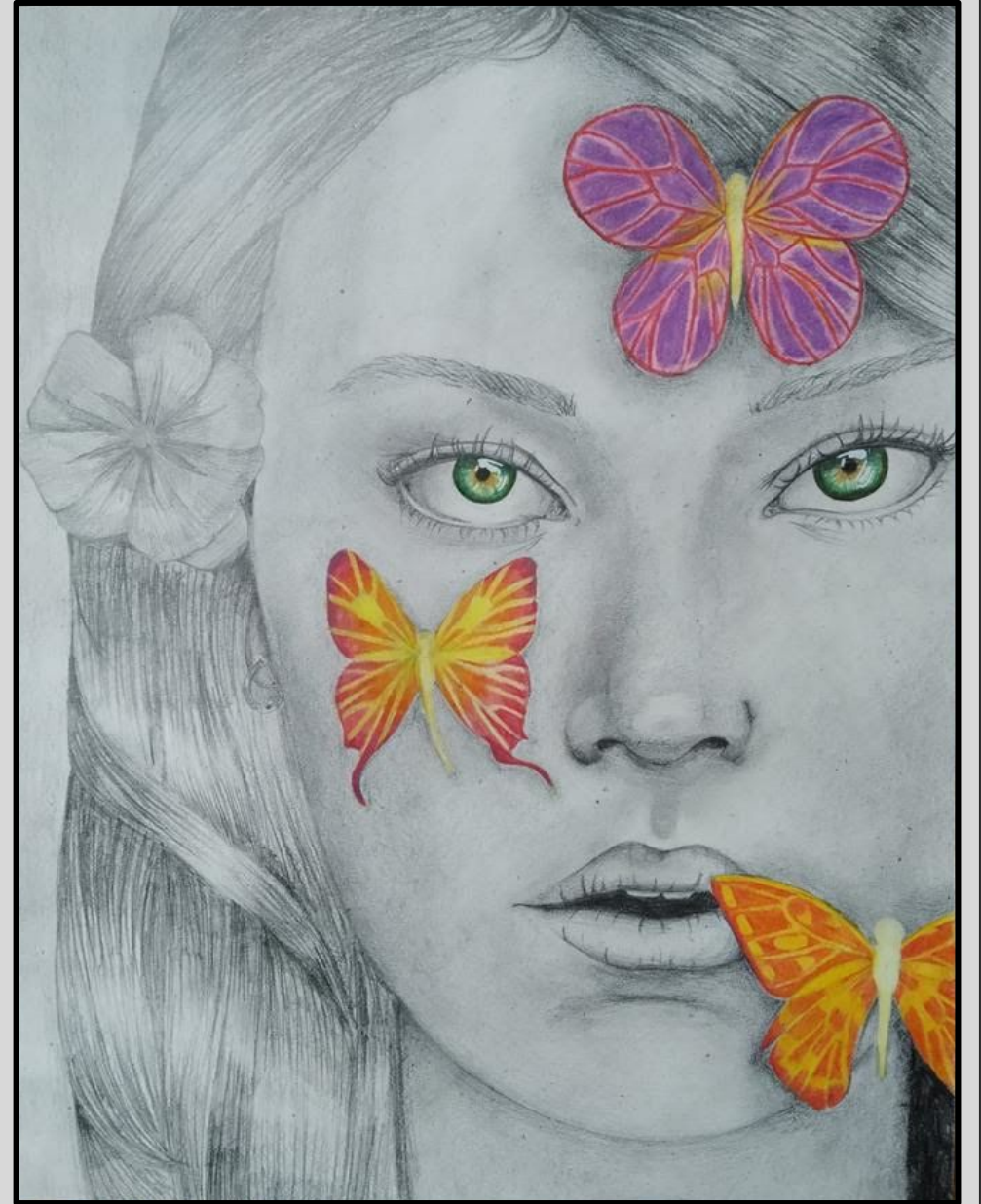
MRS MEABURN



DISTORTED REALITIES DESIGN IDEAS



Design Idea 1



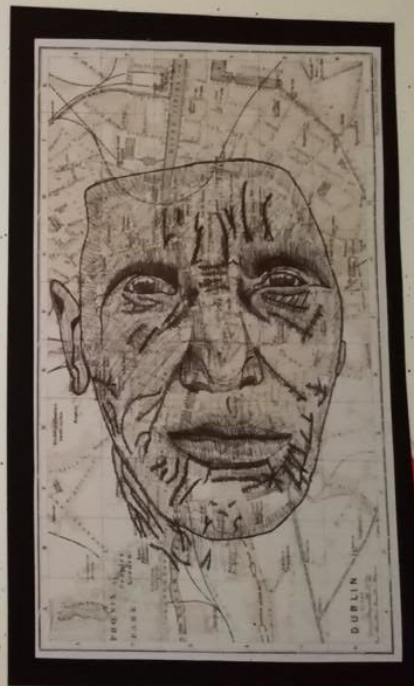
design idea two

source image



how it was made

Throughout this secondary source piece I have used 3 fine, black ball point, biro. I have used line and scribbling to create shading and tones. I have used a similar art style to Mark Powell, researching where the person lives and using the map of the place as a background. I started off by creating an outline of every shape I could see, starting from the hand upwards. After I had drawn out the basics and got the proportions correct I focused on the shading starting from the lightest to the darkest. The piece took a total of 13 hours as I had just pushed myself to correct little details. This eventually built up and created a lifelike biro drawing. After I had thought I had completed I started focusing on the hood to make it look like it was unfinished. Finally I proceeded to draw a little stamp in the top right corner.



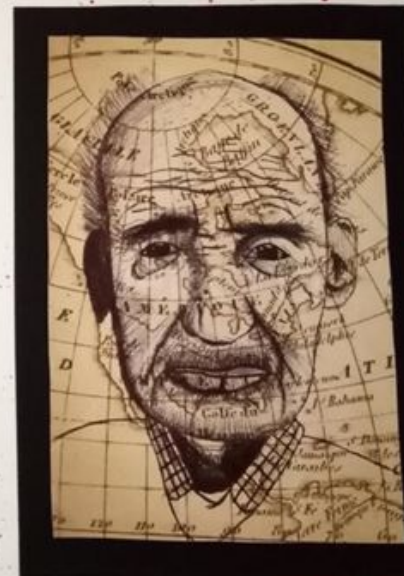
design idea three

source image



how it was made

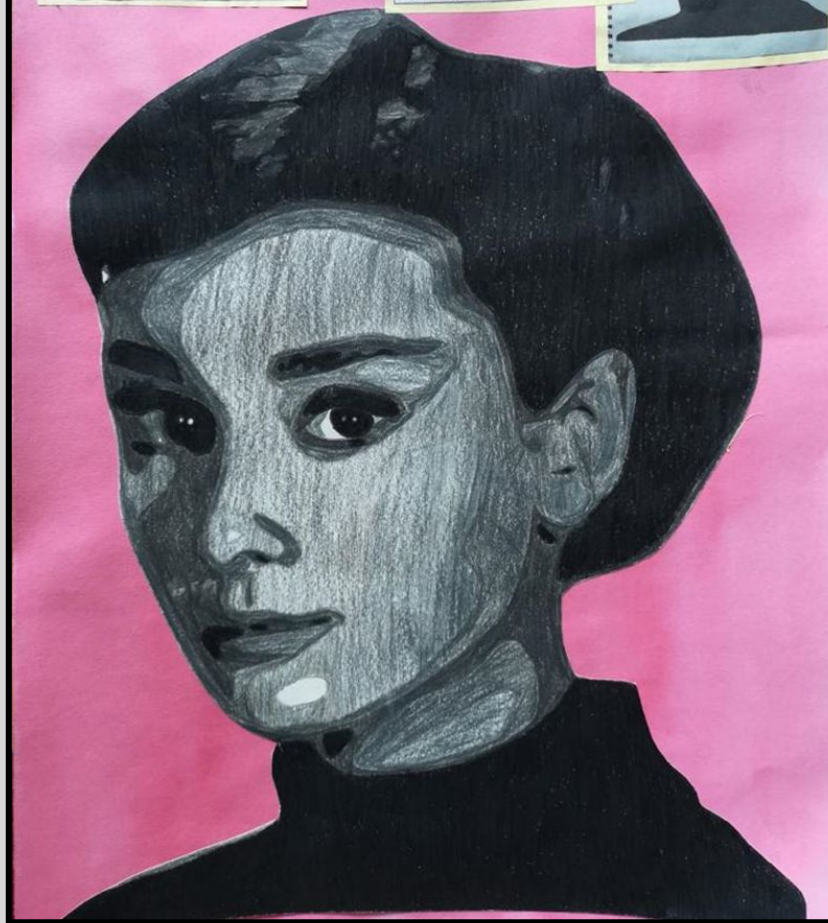
Throughout this design idea I have used shading and tonal techniques similar to Mark Powell's. I created this life like portrait with a sharp eye and a biro, focusing on every shape I could see in the face. Once I had the basics I looked more into what the shading would look like and how I would use it to create darker areas. Once I got the first layer of shading down I added lighter shading, building it up slowly. Overall I think it came out well with the little time I had. I think I could have improved by focusing more on the shading and adding an unfinished look. In my opinion I really like the portrait and think it is similar to what Mark Powell creates.

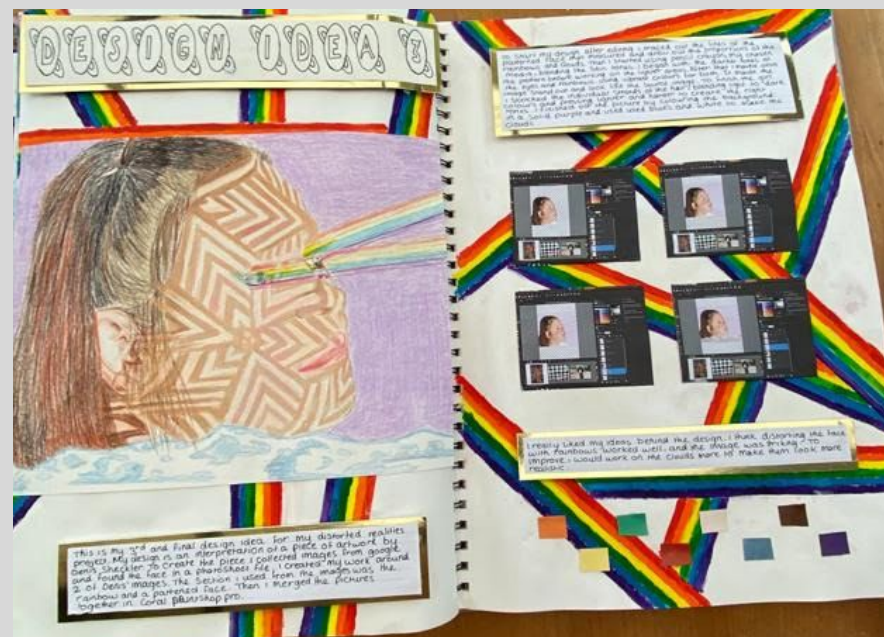
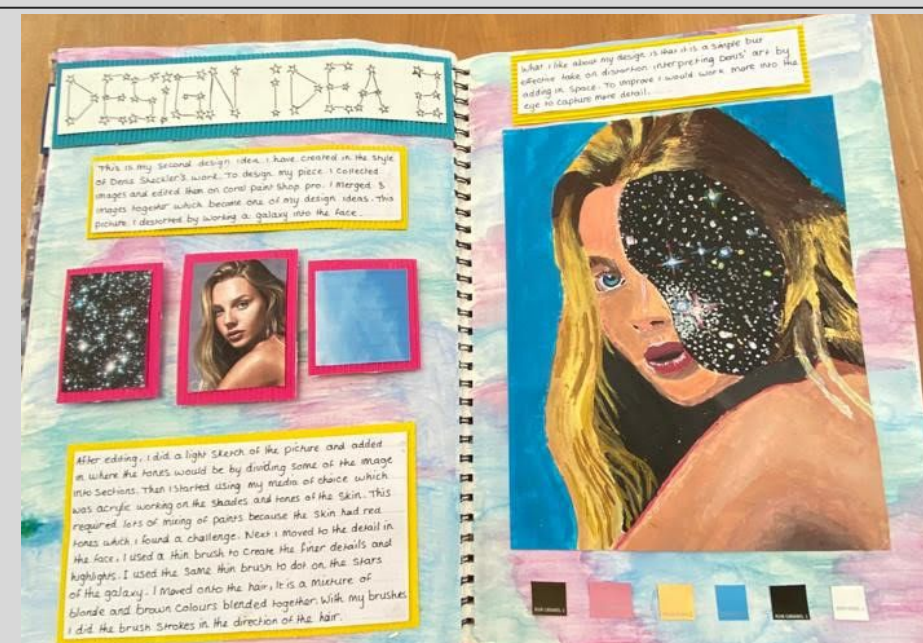
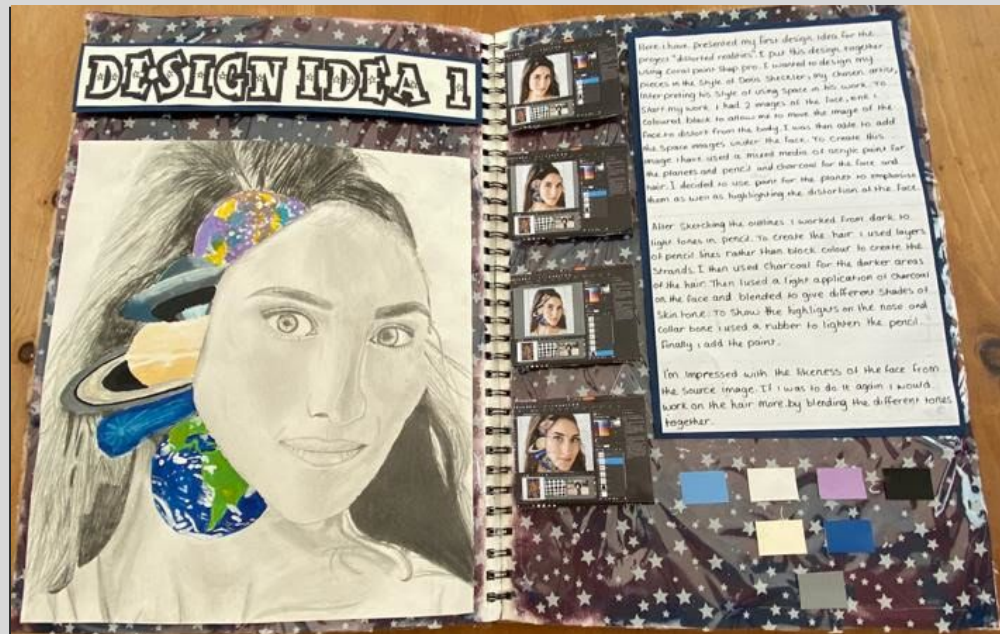


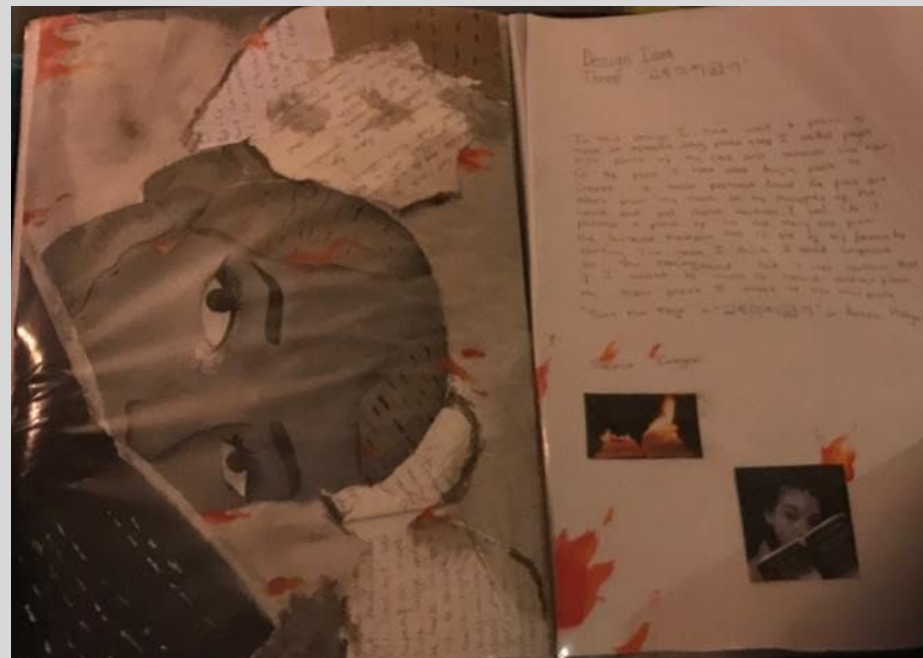
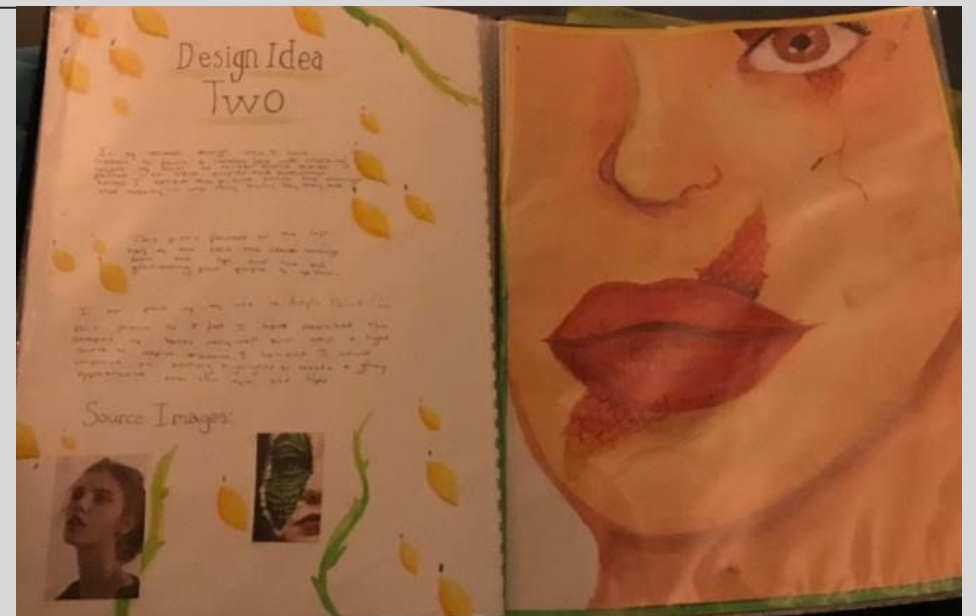
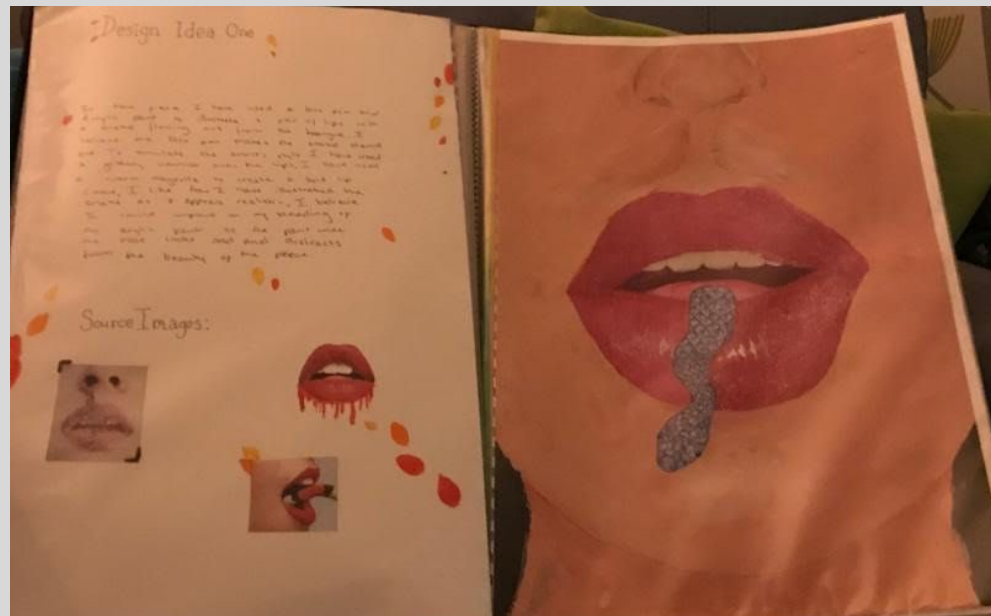
Design Idea A3

Lastly I made sure I got everything the right colour and I got a white pencil crayon and coloured in the white part to make it stand out more.

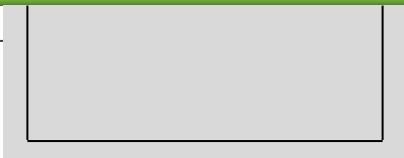
I think I got the colours the right shades and I'm happy with how it turned out. If I could improve anything it would be the eyes I think they look to big.





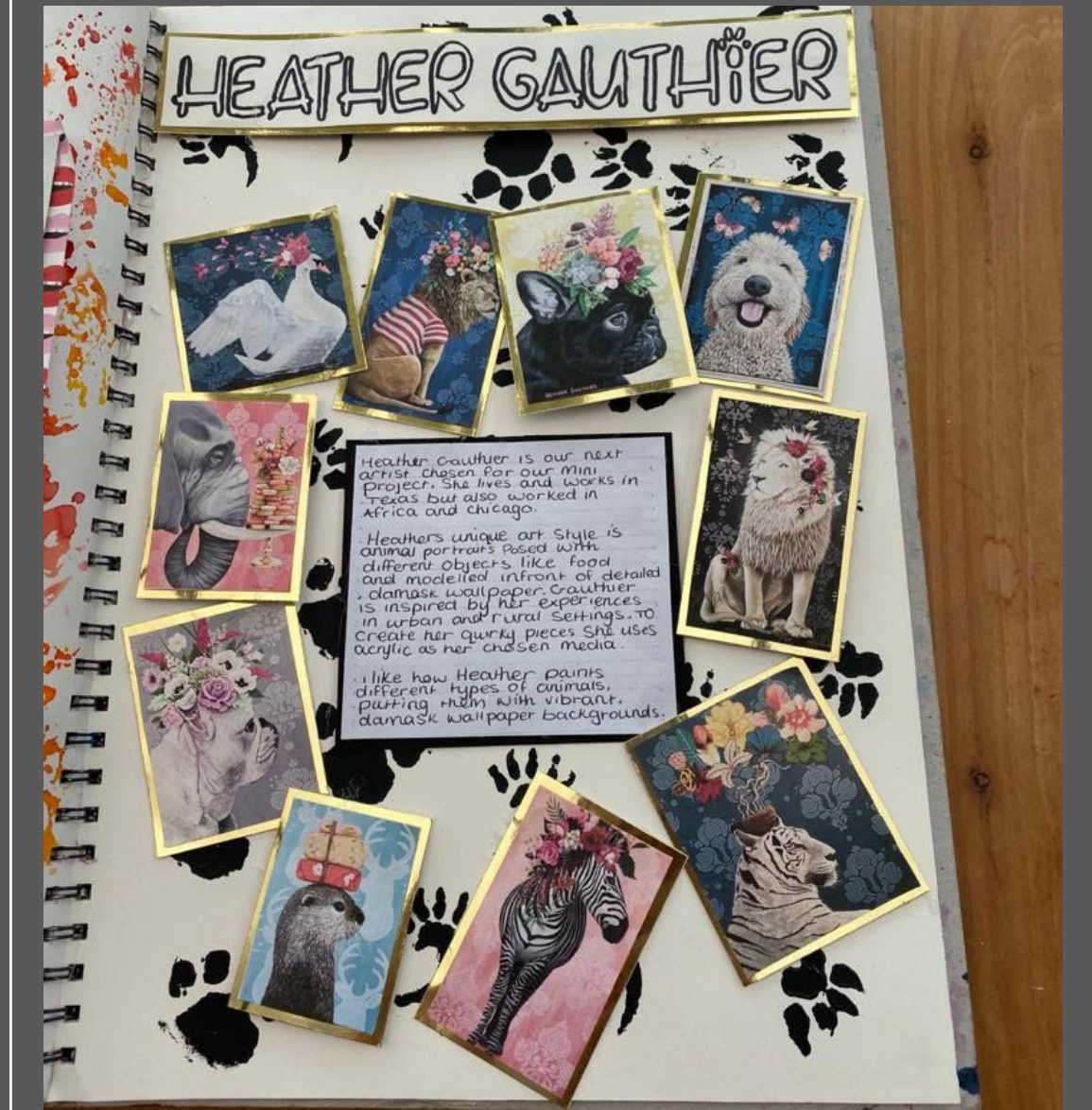
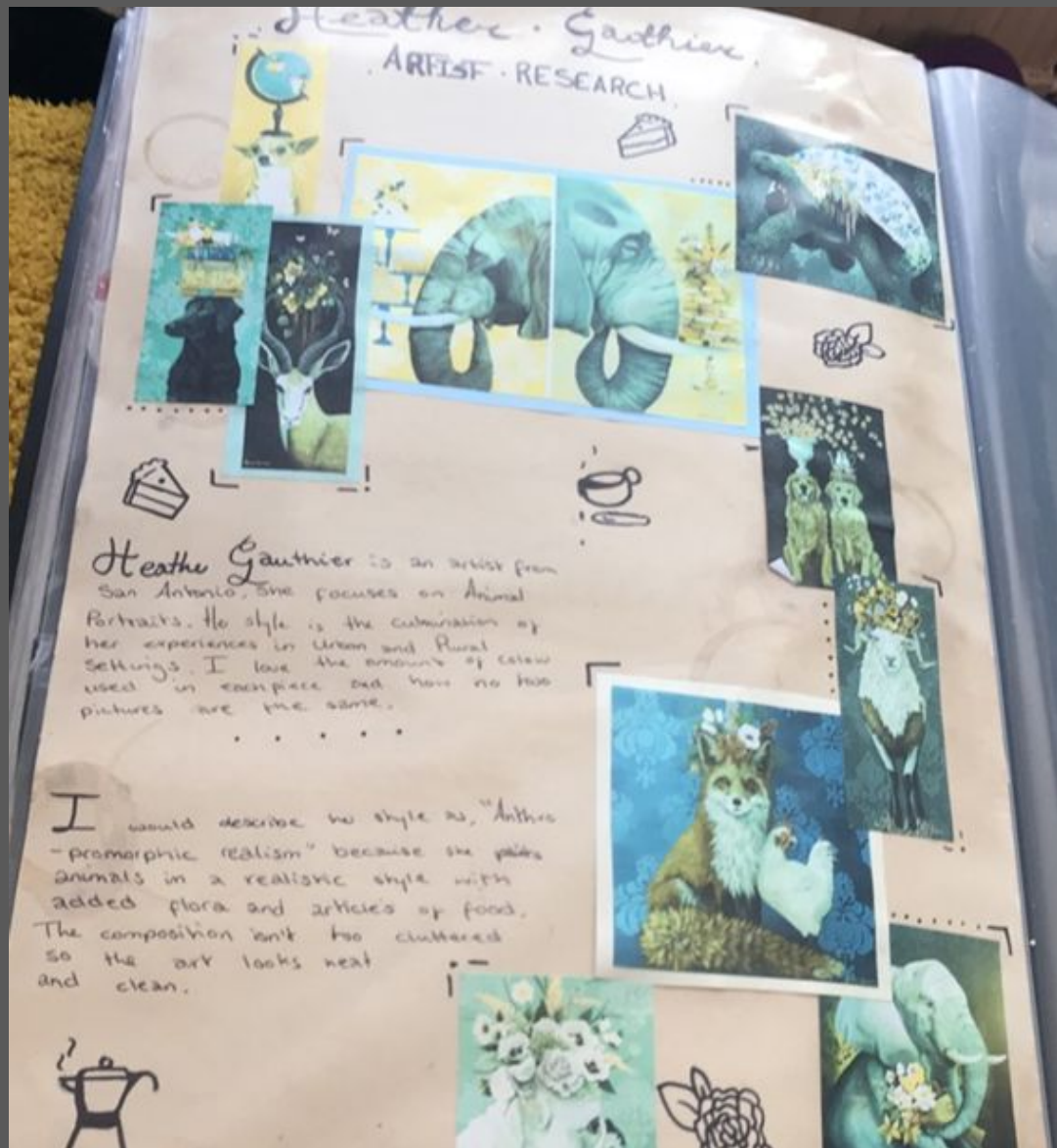






HEATHER GAUTIER ARTIST RESEARCH



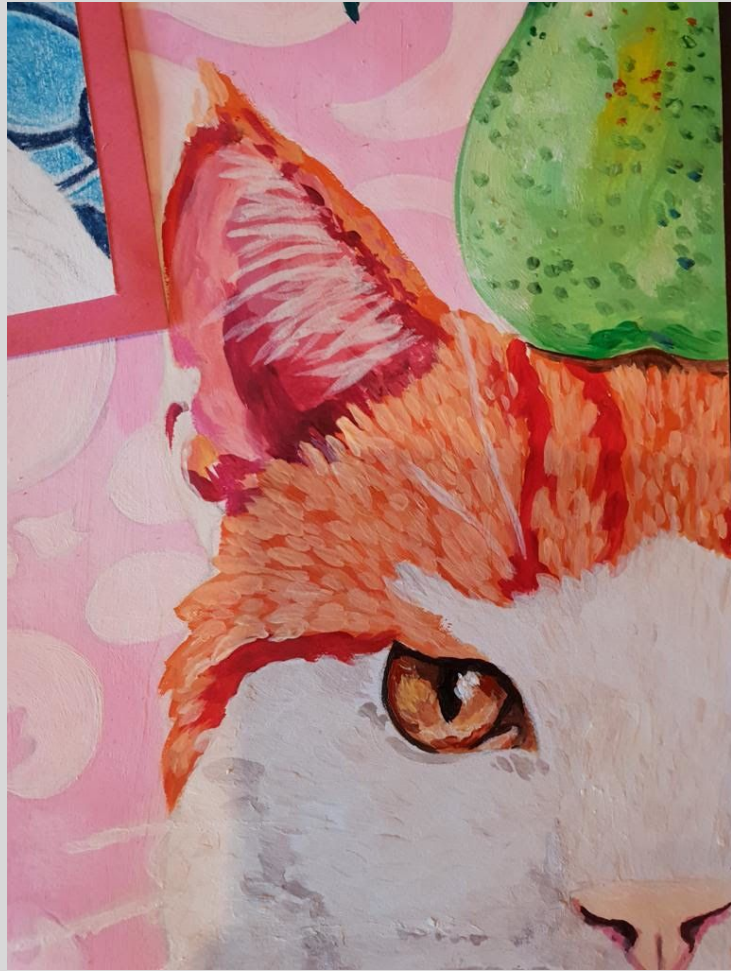




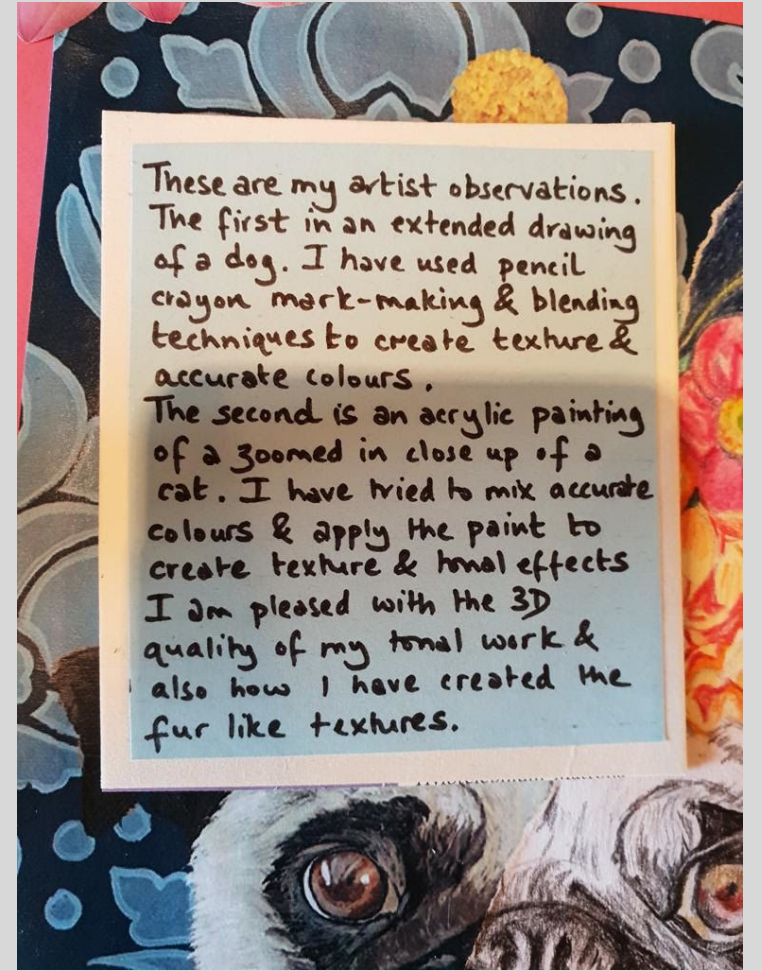


HEATHER GAUTIER ARTIST OBSERVATIONS





These are my artist observations. The first in an extended drawing of a dog. I have used pencil crayon mark-making & blending techniques to create texture & accurate colours. The second is an acrylic painting of a zoomed in close up of a cat. I have tried to mix accurate colours & apply the paint to create texture & tonal effects. I am pleased with the 3D quality of my tonal work & also how I have created the fur like textures.







THEME RESEARCH

