



**EDUCATION
LEARNING
TRUST**

COLLABORATE - EMPOWER - ACHIEVE

INFORMATION FOR

NEW STUDENTS AND PARENTS/CARERS

2022/2023



**WERNETH
SCHOOL**

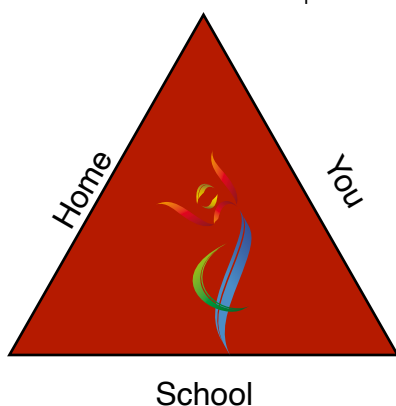
WELCOME TO WERNETH

Dear Student,

Welcome to Werneth School. You are about to make the important change from primary to secondary school. By choosing Werneth School and gaining a place for September you have already taken the first steps on your journey to secondary success.

We are extremely proud of our students and our school. We want you to work hard to achieve your best. By the end of your five years with us we want you to be proud of what you have achieved and have the skills of lifelong learning.

You will be meeting some of the staff and I know they are keen to help and support you. Secondary school is a partnership and together we can achieve. The progress that you make at Werneth School will be a true partnership.



You will soon get to meet your form teacher, and this person will be very important to your time at Werneth School. Your form tutor stays with you throughout your years at Werneth School and will support you every step of the way.

We hope you will come to school, feeling happy and safe everyday. Get involved, set yourself learning targets and do your homework. You are growing up fast and we hope you will grasp every opportunity both in lessons and after school in our many clubs to enjoy your time with us and thrive at our school.

Good luck! I look forward to meeting you.
Mr Andrew Conroy
Headteacher



Werneth School believes in a broad and balanced curriculum throughout students' time in school.

Students follow a curriculum that focuses on breadth of subjects, with extensive time to focus on the core subjects of English, Mathematics and Science. Students follow a rigorous programme of study at Key Stage 3, before choosing a wide range of GCSE options at the end of year 9.

Support and enrichment is important at Werneth, and there are many additional support mechanisms in school. At the other end of the spectrum, our students can access Gifted and Talented opportunities. Developing "Life Skills" is an important theme in our curriculum, with dedicated life skills experience days over all 5 year groups, and all students learn in dedicated "Life Learning" lessons.

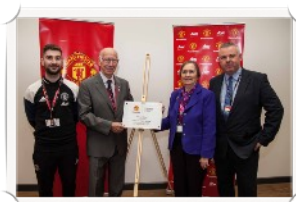
Finally, the school takes advantage of sponsored programmes in co-ordination with our aspirational school sponsor Manchester United Foundation. This means that students can access a considerable enrichment programme of leadership and developmental activities.



INFORMATION FOR YEAR 7 PARENTS/CARERS 2022 - 2023



“A new school: a path to future success”



Dear Parent/Carer,

Welcome to Werneth School! This handbook is our first opportunity to cement our partnership with you and your child as they make the transition from primary to secondary school. We thank you on choosing Werneth School as your child's secondary school. We want to work with you to make sure their transition is a success and, as your child begins their journey to secondary success with us, they feel valued, happy and safe. We want every student at our school to succeed and achieve their potential.

Our scope to influence lives is limited without a genuine partnership between home and school. Together, we can achieve the best for our students and a brighter future for them. We will expect your child to work hard and will value your support at all times.

We will do our best to keep you informed about school life in general and about your child's progress in particular. We are a listening school and will always listen to your views and take your concerns seriously.

Werneth School is an academy member of the Education Learning Trust, a multi-academy group of schools based in Stockport. The Trust contains five schools, with three primary schools and two secondary schools. Academies work in exactly the same way as local authority schools, but have more direct control of their finances and resources, and can work collaboratively to improve standards across all schools. By joining Werneth, your child will join a network of school leaders who are working together to focus on our aim to COLLABORATE, EMPOWER and ACHIEVE the very best that we can for every child.

We hope you will find this booklet useful. Please read it with your child. I have read a great deal of educational research in my time and the evidence shows that parents/carers have a great influence on their child's achievement and success at school, by reinforcing the value of education.

We look forward to the next five years of strong partnership.

Mr Andrew Conroy

Headteacher

Contents
Parental involvement
Year 7 Organisation
Your Form Tutor
Homework
Assessment and Achievement
Attendance
Work in Partnership
School Uniform
Code of Conduct
Rewards
Catering
Term dates
Safeguarding
Phone/ICT Policy
Anti-Bullying
Things to remember

PARENTAL INVOLVEMENT



Educational research shows that parental involvement in a child's education affects students, parents and communities in a positive way.

Benefits for students:

- greater attainment and achievement;
- better attendance;
- more homework completed;
- more positive attitudes and behaviour;
- greater involvement in post-secondary education.

Benefits for parents:

- more confidence in and understanding of the school's role;
- greater confidence in themselves as parents and in their ability to help their children learn at home;
- greater likelihood that parents will enrol in continuing education in order to advance their own development.

Benefits for school and communities:

- improved communication, knowing parents can better understand and support their work;
- more support from families;
- a better reputation in the community for the school's young people.

At Werneth School you can support your child by:

- checking they are well-prepared for school;
- ensuring that your child wears the correct uniform to school;
- take the opportunity to attend Parents' Evenings even if your child is doing really well in school.
- get a glimpse of their world;
- attend school events, if your child sees you treating school as an interesting place they will too;
- remember that your child's Year Achievement Leader and Year Inclusion Manager can help with issues to do with progress, attainment and attendance.

We are only a phone call, letter or email away.



YEAR 7 ORGANISATION

In Year 7 there are 11 forms with a maximum of 24 in each form.

Form Tutors will help you find your way around, help you with homework and make a success of your time at Werneth School.

Leading each Year is a **Year Achievement Leader** this is **Mrs Tonge** who is responsible for:

- academic progress;
- attendance
- behaviour
- raising student achievement;
- developing positive attitudes towards learning;
- encouraging a sense of belonging to each year group.

★ **Year Inclusion Manager - Mrs Taylor is responsible for:**

- attendance
- behaviour
- pastoral issues/referrals
- student well-being

Times of the School Day:

Period	Time
Registration:	8.45 - 9.05
Lesson 1:	9.05 - 10.10
Lesson 2:	10.10 - 11.10
Break	11.10 - 11.30
Lesson 3:	11.30 - 12.30
Lesson 4:	12.30 - 13.30
Lunch:	13.30 - 14.10
Lesson 5:	14.10 - 15.10

THE
SENIOR
LEADERSHIP
TEAM

WHO'S WHO AT WERNETH



Mr A Conroy
Headteacher



Miss A Fowler
Deputy Headteacher
Learning, Teaching and Professional Development



Mrs P Foy
Deputy Headteacher
Curriculum and Achievement



Mr G Norman
Assistant Headteacher



Ms J Dee
Assistant Headteacher



Mrs R Chantler
Assistant Headteacher



Mr D Willis
Assistant Headteacher



Miss G Kennedy
Assistant Headteacher



Mrs L Taylor
Assistant Headteacher



Mrs E Sorsby
Business Manager

YOUR FORM TUTOR

Without any doubt, the most important teacher for you at Werneth School is your form tutor.

They are the person you should go to if you have any difficulties or problems. They are there to help, advise and guide you through your five years with us.

Your form tutor will see you every day and will be interested in everything you do. Your form tutor will do everything they can do to help you settle in quickly and make sure that you make the right progress in lessons.

Werneth School will be very different from your primary school.

Some of your primary school teachers along with our Transition Team have worked very hard to make this change from primary school to Werneth School as smooth and as easy as possible. Your form tutors will know lots about you already.



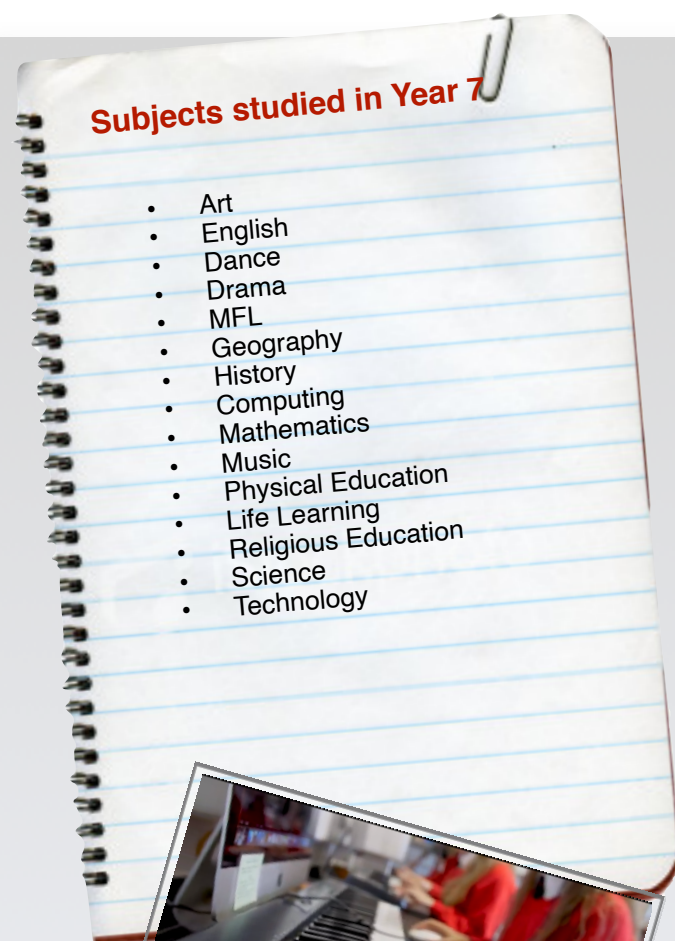
Your form tutor will supervise your form activities and make sure that you are regularly reading your book. They will check that you have the correct equipment with you. Your Form Tutor will also make sure that you are wearing the correct uniform.

For good attendance, punctuality, uniform and organisation your Form Tutor will award you with achievement points.

If you feel that your child may need some extra guidance and support with their learning, please contact the Special Educational Needs Department. If your child has received extra provisions during primary school, you may want to liaise with the school SENDCO to see if any further interventions need to be put in place.



Mrs S Burke
*Special Educational
Needs' Co-ordinator*



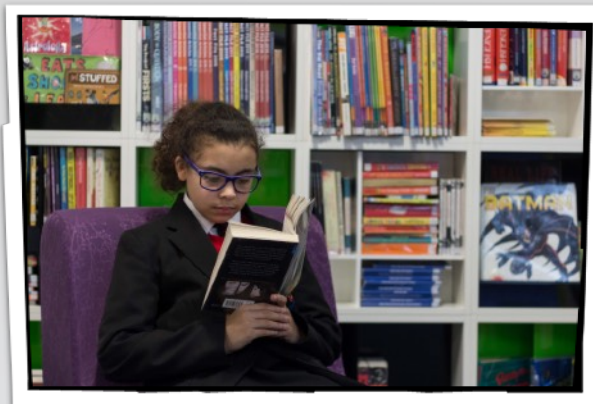
- Art
- English
- Dance
- Drama
- MFL
- Geography
- History
- Computing
- Mathematics
- Music
- Physical Education
- Life Learning
- Religious Education
- Science
- Technology



HOMEWORK



Homework is an essential part of making good progress and becoming an independent learner.



Year 7 students are expected to read for at least 15 minutes every night, preferably with a parent/carer. Reading is a key skill in order to make good progress in many subjects and almost always improves with regular practise. You will be given new reading books regularly.

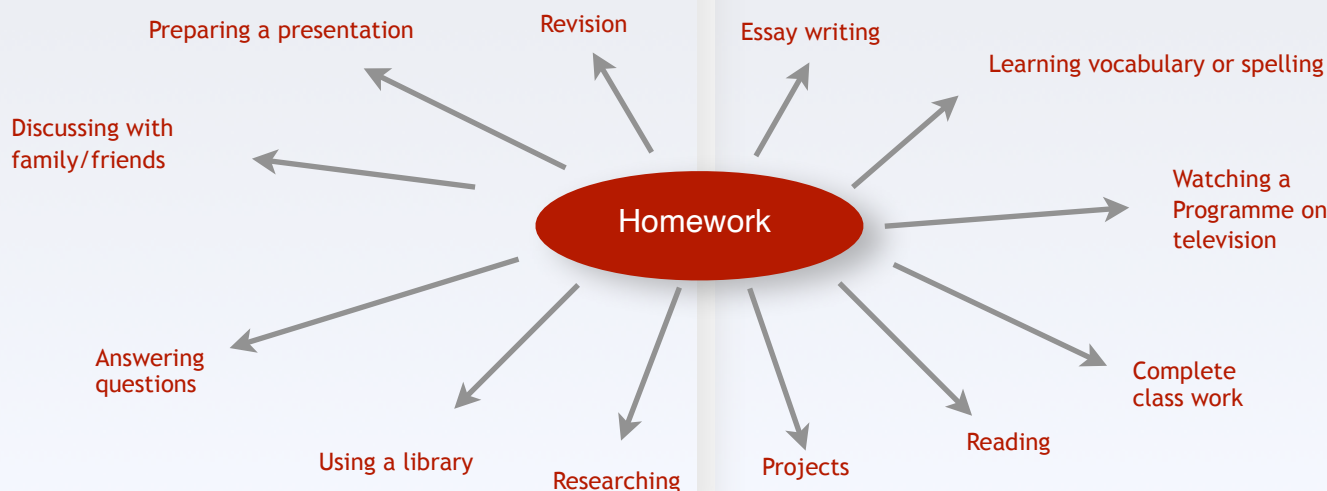
Google Classroom is the primary online platform Werneth School uses to inform students about home learning.

Satchel:One is a website that allows homework tasks to be set and managed easily. It allows parents to monitor their child's homework.

Homework maybe set in many different ways.

Tips for Homework:

- Set aside a place for homework to be done or ensure your child completes it in the school library;
- Make sure the necessary equipment is available: pencils, pens, eraser, calculator and ruler;
- Set aside a special time for homework each day;
- Insist that the television be turned off so that your child can concentrate; sometimes playing music at low volume helps to mask household sounds;
- If there is a lot of homework, help your child to structure the time; set a timer and encourage short breaks of a few minutes;
- Monitor Satchel:One and report any concerns to your child's Form Tutor
- Homework club is available after school for support.

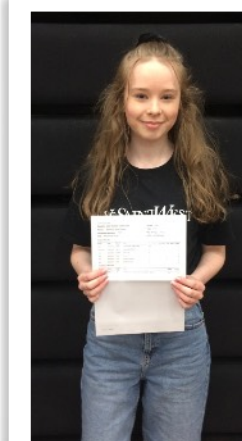


ASSESSMENT AND ACHIEVEMENT

Your work during your time at Werneth is assessed continuously. Every piece of work you do is important. Your teachers will provide regular feedback to help you improve your work and make progress. You will be given time during lessons to act on this feedback and make your work better.

Your teachers will grade your Attitude to Learning each term. To receive a good grade you must try your best in each lesson, learn from the feedback you are given, complete your homework and be well equipped for each lesson. Termly you will receive a progress report which tells you how well you are progressing in your subjects.

You and your parents will be invited into school to discuss your progress with your teachers towards the end of Year 7. If we have any concerns we may invite your parents in earlier. If you have any concerns about the progress you are making you should discuss this with your Form Tutor.



YEAR 7 PROGRESS REPORT SPRING TERM 2018

SUBJECT	TEACHER
ENGLISH:	Mrs E. Warren
MATHEMATICS:	Mrs R. Magid
SCIENCE:	Mrs J. Hamman
ART:	Miss C. Carr
EXPRESSIVE ARTS:	Mrs J. Tonge
GEOGRAPHY:	Mr C. McKeele
HISTORY:	Mr G. Norman
ICT:	Mr C. Barnett
LIFE LEARNING:	Mrs J. Tonge
MFL:	Miss S. Bartha
MUSIC:	Mr C. Barnett
PE	Miss T. Slane
PRACTICAL:	Mrs H. Massey
RE:	Miss J. Smith
TECHNOLOGY:	

GRADE TO BEAT	SPRING TERM TEACHER TRACKING
8	8
5	5
5	5
6	6
6	6
6	6
6	6
6	6
5	7
NO EXAM TAKEN	4
5	NO EXAM TAKEN
6	5
5	5
6	3
6	6
6	5

ATTITUDE TO LEARNING
4
5
3
4
3
2
3
3
3
3
3
4
3

PASTORAL DATA	
OVERALL ATTENDANCE	OVERALL LATES
92.6	6

AVERAGE ATTITUDE TO LEARNING
3.00



EduLink - School App

EduLink allows you to access information about your child or children with a single login. It also allows the School to communicate messages to you directly about your child.

EduLink can be accessed on any device -PC, laptop, tablet or mobile device - via the web browser or via

- * Messaging- Email, SMS & Push Notifications
- * Attendance
- * Timetable
- * Reports
- * Emergency Contact Details/ Consents update info
- * Clubs
- * Exam Timetables
- * Achievement and Behaviour
- * Calendar
- * Noticeboard
- * Absence Reporting

ATTENDANCE



Attendance

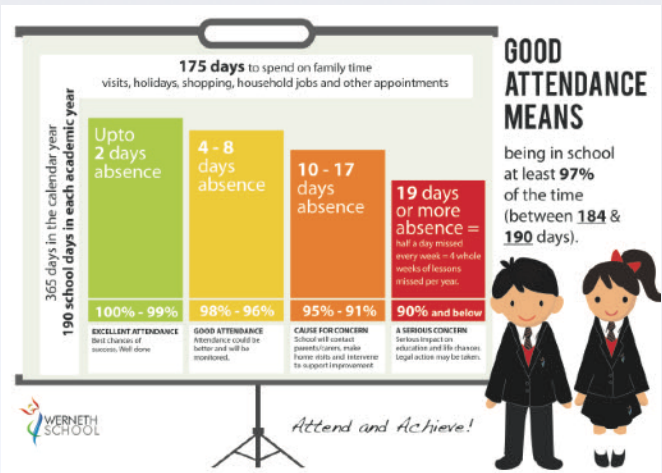
Werneth School is committed to maximising the achievement of all our students. There is a clear link between good attendance and educational achievement. Our aim is to promote regular attendance and good punctuality in order to ensure all our students achieve their potential.

It is the aim of Werneth School that pupils should enjoy learning, experience success and realise their full potential.

We believe that one of the most important factors in promoting attendance is the development of positive attitudes towards school and a sense of belonging. To this end, we strive to make our school a happy and rewarding experience for all children, and to foster positive and mutually respectful relationships with parents.

By promoting good attendance and punctuality we aim to:

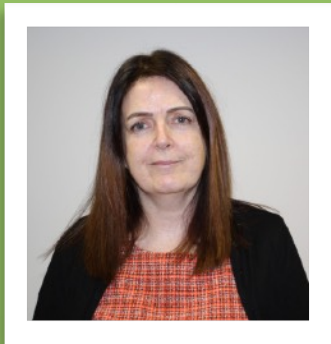
- Ensure good attendance and punctuality is priority for all those involved in the school community
- Raise our pupils' awareness of the importance of good attendance and punctuality
- provide support, advice and guidance to parents, pupils and staff
- Work in partnership with parents
- Celebrate and reward good attendance and punctuality.



Meet the Attendance Team



Tracy Hall
Attendance Lead



Audrey Lewis
Attendance Officer / Family Outreach Support

WORK IN PARTNERSHIP WITH SCHOOL

What do I do if my child has to be absent?

If your child is unable to attend school we ask that you contact us before 8.20am to inform us the reason why. It is important that you phone every day of absence so that we know your child will not be attending.

Please report your absence on 0161 494 1222, option 2 or use the Edulink App.

Punctuality

All students are expected to be at school by 8.35am, ready for the start of school at 8.40am. Any students late to form will receive an 'L' mark. Any student arriving at school after 9.30am will be given a U mark which will count as an unauthorised absence.

You can help by ensuring your child gets up sufficiently early in the morning. Help them organise themselves the night before by making sure their school bag is packed and ready to go.

Illness

All Children will be absent from school because illness at some time. If your child is not ill enough to see a Dr, they should be encouraged to attend school.

Where students are frequently absent we will look into ways of supporting you and your child.

Medical & Dental Appointments

We ask that routine appointments are arranged outside of school hours. Where this is not possible we will ask for evidence of the appointment.

Leave of Absence

Holidays can not be authorised in term time without an exceptional circumstance. If leave is taken without permission a referral will be made to the local authority who may issue a fine of £60 per parent per child.

Continued Absence

The Education Act 1996 states that if a child of a compulsory school age who is a registered pupil at a school fails to attend regularly, the parent or carer is guilty of an offence. If your child is absent from school regularly, we will offer help and support to improve this. We work closely with Stockport Council and will request that they issue a penalty notice or take legal proceedings in the Magistrates' Court if attendance does not improve.

Support

Support is always available from the Attendance Team. If you wish to discuss anything that is affecting your child's attendance, please do not hesitate to contact us on 0161 494 1222 (option 2). If we have a concern, the Attendance Team will make a telephone call, conduct home visits, send text messages and letters alerting you to this and will work with you to resolve any issues.

Talk to your child about their day. Establish routines for bedtime, getting up, packing books and equipment and ensuring that homework is completed. Celebrate success and listen to concerns. Remember that support is always available from school staff if you wish to discuss anything that is affecting your child's attendance.

Research shows that as absence from school increases the likelihood of achieving key outcomes in year 11 decreases.

Ways for Parents to promote regular attendance

Talk regularly with your child about school and how they feel about it. They are more likely to attend if they feel supported and the listen to their anxieties.

Phone School as soon as possible to explain why your child is absent and when you expect them to return. Putting the school number in your phone or using the Edulink App can save time.

Only allow a day at home for genuine illness.

Know the routine of the school day to avoid issues e.g have they packed their PE kit? If you have any concerns, ring and we will check attendance and be discreet.

Praise and reward good attendance; even small success, e.g going in promptly, even if the first lesson is difficult for your child.

Please contact your child's Year Inclusion Manager if you have any concerns.

attendance@wernethschool.com

SCHOOL UNIFORM

We feel that school uniform gives a sense of belonging and by dressing correctly students can demonstrate pride in their school.

School uniform must be worn by all students and we have always found that parents indicate a strong preference for it. However, we feel that a uniform should be smart, student friendly and no more expensive than other clothes. We would request that every item of school clothing is clearly labelled with the owner's name.

- ▶ **Blazer:** black with school logo;
- ▶ **Sweatshirt:** red v-neck with school logo;(optional)
- ▶ **Trousers:** black tailored;
- ▶ **Skirt:** black pleated skirt or tailored trousers;
- ▶ **Shirt/blouse:** white with collar, buttons to the top;
- ▶ **Tie:** school tie only;
- ▶ **Footwear:** black plain shoes worn below the ankle bone - No trainers to be worn in school
- ▶ **Socks/tights:** black ankle socks worn below the knee or black tights.

There should be no coloured pattern or writing on the fabric of any of any items of school dress (including shoes).

Students should not wear denim items. Make up and jewellery **MUST NOT** be worn at school. Only plain white, black or red headbands or hair clips are allowed. Students should not wear t-shirts under their shirts. Students should wear blazers at all times.

Shoes must not have stripes, lines, coloured labels or reflective strips. Plain black only.

Coats should not be worn in the school building.

Consequences are issued for students who do not wear full uniform.



Physical Education Uniform

Below is the sportswear students must wear for physical education.

It is essential 'in the interest of personal hygiene' and cleanliness that students change for all physical education lessons.

PE KIT / DANCE KIT

- Red polo shirt with school logo;
- Optional black sweatshirt, black shorts and red socks;
- Optional black tracksuit trousers.

BOYS

Footwear: trainers, football boots (screw in studs recommended for team players).

Clothing: red and black reversible rugby shirt.

GIRLS

Footwear: trainers, moulded sole football or hockey boots are recommended for school team players.



Uniform can be purchased from:

- **Bonny Bouncer**, Stockport Road, Bredbury.
- **Monkhouse Schoolwear**, 217 Chestergate, Stockport.

CODE OF CONDUCT

We Are Werneth

Collaborate

- We will treat each other equally and fairly
- We will encourage, support and help each other
- We will challenge each other in an appropriate way

Empower

- We will look for ways to praise and celebrate each other
- We will celebrate our differences
- We will help each other not give up if things get difficult

Achieve

- We will know what our goals are and how to get there
- We will understand that we need to make mistakes to be able to get better
- We will explain to each other what has gone wrong and how to improve when we need to

All of this is how we **respect ourselves, respect each other** and **show our trust** in one another



**EDUCATION
LEARNING
TRUST**

COLLABORATE - EMPOWER - ACHIEVE



SUCCESS - What does it look like at Werneth?

Students at Werneth School are encouraged to achieve their potential and strive to improve their learning across many facets of school life. At Werneth we look to recognise students that **GET IT RIGHT** daily, weekly and termly.

Students **GETTING IT RIGHT**, includes meeting the schools expectations, correct uniform, prepared for lessons and ready to learn. Added to this is a commitment to trying their best in all lessons This is **GETTING IT RIGHT** at Werneth School.

Rewards are for recognition of **Effort, Consistency** and **Excellence**. We may not all be high flyers and achieve the highest scores, but if we are hard working and consistent in our approach to learning we will be recognised by teaching staff at Werneth.

STAR OF THE WEEK

Each week every member of staff in the school has the opportunity to nominate a student for star of the week. 60+ students are nominated and published in the Headteachers newsletter, displayed on the rewards boards around the school. Each student will receive a chocolate prize and certificate for their effort. One lucky winner is randomly drawn to receive a £10 voucher weekly.

GOLDEN TICKET

The golden ticket is given to a student for outstanding effort or achievement over a whole half term. Here we look for consistency, and students that have been **GETTING IT RIGHT** over the half term will have a chance of winning a golden ticket. Those nominated for a golden ticket will receive a prize, certificate and entry into the £50 voucher draw. 4 Winners are selected every half term.

ACHIEVEMENT POINTS

Students who follow the school's expectations can expect to pick up Achievement points on a daily basis. For meeting basic expectations students should receive **1 point** a day. For excellent effort in class **1 point** per lesson and for Excellence in achievement students can receive **5 points** for a project, homework or excellent test result. Points lead to achievement badges, and entries into prize draws.

Points Criteria

- 100 Points Enter into prize draw for that half term.
- 200 Points Bronze Award Badge
- 300 Points Silver Award Badge
- 400 Points Rewards Breakfast
- 500 Points Gold Award Badge
- 600 Points Platinum Award Badge



**EDUCATION
LEARNING
TRUST**
COLLABORATE - EMPOWER - ACHIEVE



CATERING

School Catering

The catering for Werneth School is provided by Taylor Shaw. The menus are fully compliant with the Government's statutory nutritional standards which came into force for the secondary schools in September 2009 and they are updated every year.

The facilities are available to students and staff as follows:

Breakfast	8.00am – 8.45am
Break	11.10am - 11.30am
Lunch	1.30pm – 2.10pm

We supply delicious homemade dishes, which can be bought in a complete 'meal deal'.



We use ParentPay at our school which means students can purchase food and drink with their fingerprint. You can top-up your child's account online by logging into ParentPay online, www.parentpay.com You will be sent log-in details and guidance on how you can do this when your child starts at Werneth. Alternatively, students can use the top-up machine which is situated in the dining room. No money will be accepted at the tills. The Free School Meal Allowance will be added after break to allow your child to use the allowance at break or lunch. Please ensure accounts are always in credit.



2021-2022

Breakfast	
Toast	80p
Bagel	45p
Garlic Bread	45p
Cheese on toast	70p
Breakfast Pot	99p
Hash brown x 3	99p
Bacon/Sausage Bap	99p

Deli	
Sandwich selection	£1.20—£1.90
Tuna pasta pot	£1.05
Fruit Pots	70p
Jelly/Mouse	50p
Sausage Roll	£1.20
Homebakes	30p-80p
Drinks	45p—90p

Lunch	
Chicken Burger	£1.90
Hot Flavoured Chicken Wrap	£1.90
Filled panini	£1.90
Hot dog	£1.90
Popcorn chicken with chips	£1.90
Chicken nuggets	£1.65
Jacket Potatoe with filling	£1.40
Donner Kebab	£1.90
Pasta Pots	£1.90
Curry and rice pot	£1.90

Taylor Shaw
School Food Specialist

PRICES
SUBJECT TO
CHANGE

We also have pasta meals with a large range of hot and cold toppings. Jacket potatoes and toppings are popular, along with hot filled wraps, paninis and homemade soup.

We welcome feedback and any new ideas. From time to time we hold focus groups with the students to gather their views and choice of meals.

SCHOOL HOLIDAY AND TERM DATES 2022-2023



School Holiday and Term Dates 2022 - 2023

AUTUMN TERM 2022

School commences on **Monday 5th September 2022**

School breaks up on **Friday 21st October**, and returns on **Tuesday 1st November 2022**

Friday 2nd December is a staff INSET day

School breaks up for Christmas on **Wednesday 21st December 2022**

SPRING TERM 2023

School commences on **Thursday 5th January 2023**

School breaks up on **Thursday 16th February 2023**, and returns on **Monday 27th February 2023**

School breaks up for Easter on **Friday 31st March 2023**

SUMMER TERM 2023

School commences on **Monday 17th April 2023**

School breaks up on **Friday 26th May 2023** and returns on **Monday 5th June 2023**

School breaks up for summer on Friday 20th July 2023

**2022/23
Calendar**

How to contact us:

Werneth School
Harrytown
Romiley
Stockport
SK6 3BX

T: 0161 494 1222

E: reception@wernethschool.com

E: admin@wernethschool.com

Transition Email -

transition@wernethschool.com

Visit our school website for more information

W: www.wernethschool.com



SAFEGUARDING AND HOME SCHOOL AGREEMENT

Safeguarding children is the responsibility of everyone.

As such all the staff in our school have a duty to safeguard and promote the welfare of children. This duty is placed upon school by Section 175 of the Education Act 2002.

This means we have a Designated Officer for Child Protection. In our school this is Ms Dee with Mrs Taylor assisting.

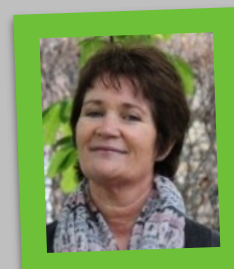
If we are concerned that a child may be at risk from significant harm (abuse) or is being abused, the school is required to refer our concerns onto Social Care and the police if necessary. In some circumstances this may happen without the consent or knowledge of parents/carers.

School also has a responsibility to act upon other concerns that they may have about a child's welfare in circumstances where there are not suspicions of child abuse. Examples of this may be when a child is demonstrating inappropriate behaviour, is involved in bullying, is failing to come to school or where difficulties at home are having an effect upon the child's wellbeing. However, this list is by no means exhaustive.

In Stockport there is an expectation that school will always discuss these issues with parents/carers before deciding upon a course of action to support the child.

Our school has a safeguarding policy, which explains all the above in much more detail. If you would like to see the policy, please do not hesitate to contact us.

The
Designated
Safeguard
Lead is
Joanne Dee



The Deputy
Safeguarding
Lead is Tracy
Taylor

Teachers and governors will do their best to:

- provide a secure and caring environment for your child;
- contact parents promptly if there are any concerns;
- provide a balanced curriculum which will meet the needs of your child;
- offer counselling, guidance and advice when needed;
- keep you informed about your child's progress by providing at least one report and one Parents' Evening each year;
- welcome your involvement in the life of the school.

As a parent/carer I will do my best to:

- ensure that my child attends school regularly, on time and properly equipped;
- take an active and supportive interest in my child's life at school;
- support the code of conduct of the school and the school uniform policy;
- attend Parents' Evening and support other school activities;
- let the school know of concerns, problems or changes of circumstances which may affect my child's work or behaviour;
- inform the school of my child's absence on the first day.

As a student of the school I will do my best to:

- attend school and lessons regularly and on time;
- bring all equipment, books and kit I need for each day;
- wear the correct school uniform, and have a clean and tidy appearance;
- be polite and considerate to all members of the school community and follow the code of conduct;
- complete all my classwork and homework on time and as well as I can;
- refuse to take part in bullying or anti-social behaviour;
- respect the environment of the school and its neighbourhood, and help to keep it free from litter and graffiti.

MOBILE PHONES AND DIGITAL TECHNOLOGIES



ICT Student Policy

- I am responsible for my files and understand that the school will check my files and monitor the sites I visit.
- I will use the school email system sensibly and will only email people I know or that my teacher has approved.
- My emails will be polite and sensible.
- I will only enter sites on the internet that are relevant to my study or have been sanctioned by my teacher.
- I am aware that using proxy bypass sites will result in my internet privilege being removed.
- I will not tell my password to anyone and realise that if I do, my network privilege will be removed.
- I will not rearrange any of the hardware. I will always consult the ICT support team to do this.
- I will not access other peoples' files, email accounts or VLE space.
- I will only access the network and, email and VLE with my own login and password which I will keep secret.
- I will not give out any personal information in my emails eg. home address or telephone numbers or arrange to meet someone.
- I am aware that every time I log on to the school network I must agree to the school AUP and I will be monitored by SECURUS system.
- I will only use the computers for school related study.
- I am aware that I will be charged for excessive printing.
- I will not try to install any software on the network or client machines.
- I am aware that all the e-learning resources I have available have been provided to help me learn and I should look after them and take all the steps I can to keep them safe for my own use.

MOBILE PHONES/ ELECTRONIC DEVICES

Werneth School accepts that parents give their children mobile phones to protect them from everyday risks involving personal security and safety. It is acknowledged that providing a child with a mobile phone gives parents reassurance that they can speak with a child quickly at any time. Parents are reminded that in cases of emergency, the Year Inclusion Manager remains the vital and appropriate point of first contact.

Mobile phone **must be turned off** and out of view while in school. A mobile phone or electronic device out in school will lead to confiscation until the end of the school day. Continued offences over a period of time will result in SLT/Year inclusion Manager confiscating the device until parents can collect.

ANTI-BULLYING

Werneth School Anti-bullying Policy

Werneth School will respond promptly and effectively to issues of bullying to ensure that we provide a learning environment free from threat or fear that is conducive to achievement.

Statement of intent

We are committed to providing a caring, friendly and safe environment for all of our students so they can learn in a secure atmosphere. Bullying of any kind is unacceptable at our school. If bullying does occur, all students should know that incidents will be dealt with promptly and effectively. We are a TELLING school. This means that anyone who knows that bullying is happening is expected to tell the staff.



Reporting Bullying

Whether you have witnessed someone being bullied, or you are the person being bullied, reporting it is always the right thing to do. Please don't worry about it.
You can report to your Year Inclusion Manager or member of staff in the HART team

What we define bullying as:

Bullying is the purposeful choosing of behaviours that threaten, intimidate or hurt someone, which is often, but not always repeated overtime, which involves a real or perceived power imbalance.

What happens when bullying is reported?

- School staff will work with the student to agree a way to resolve and end the bullying
 - Students who have bullied will be helped:
 - Talking through the incident(s), how and why both parties became involved;
 - Being clear about the wrong doing and agreeing the need to change their behaviour;
- Parent and carers will be informed to help change the attitude of the student.
Sanctions will be issued where appropriate.

THINGS TO REMEMBER



Your Property

Students should bring a bag to school sturdy enough to carry your books and belongings. All property should be clearly marked with your name. If you do lose something, see your form tutor first. It may be impossible to trace, if it is not named. Lost property is in the main office.

If you are late

Punctuality is an important training for life. Your tutor will explain the procedure if you do arrive late.

Detention

Students may be detained after school finishes; however, parents will have been notified 24 hours beforehand via text home.

Rewards

In every lesson you can be awarded achievement points on our EduLink App. Points are given out for attendance, equipment, progress, good work and good behaviour. Students will be reward with prizes weekly, termly and annually.

Equipment

Every student is expected to take their Werneth equipment to every lesson. You should also have a school bag with you every day, along with a pen / pencil / ruler and a scientific calculator.

Mobile Phones

Phones must not be out in school. They must be switched off.



First Aid

Medical Needs officer is always available at the main office to administer emergency first aid. If your child takes medication, please speak to Medical Needs to discuss arrangements. Similarly, if your child has any medical needs a nurse is available in school for part of each week. The school nurse is based in the Multi Agency Room and students may drop in on a Monday or Wednesday lunch-time.



Buses

If your child travels to school via bus, they will need an IGO pass (compulsory for 11-16 year olds), Brinnington children who choose to travel by the Yellow Bus will need an IGO pass. School buses are currently provided by TFGM and these are the Yellow Buses, from Brinnington to Werneth School. These buses leave from Portwood and their route takes them around the Brinnington estate, the last pick-up stop being Middlesex Rd. The buses then continue on to school. If, however, the school bus is missed there is alternative TFGM buses that can be used (325, 383, 381).

