



“Children are at the centre of all we do.”

NEWSLETTER 16th JANUARY 2026

Our newsletters are available to view on the school website at:

<https://heslerton.n-yorks.sch.uk/parents/newsletters>

DIARY DATES

Thursday 22nd January, Gymnastics Club Y3 – Y6 week 3.

Monday 26th January, Community Cuppa Y5 2:15 – 3:15, see box on the right

Wednesday 28th January, Y3 & Y4 to MCSC – Dodgeball.

Friday 6th February, Friends Quiz Night – 7pm Dawnay.

There may be changes to these dates. Please check the school website for events and Dojo for details.

COMMUNITY CUPPA

Residents of all ages, parents and pre-schoolers are invited to join our Year 5 pupils at the village hall for a chat and cuppa on **Monday 26th January** 2:15 – 3:15pm.

GYMNASTICS CLUB SPACES AVAILABLE

There is a Gymnastics Club at West Heslerton CE School this half term for **6 weeks** for pupils in **Years 3-6**. The club is run by Harry Sheader Sports School, funded by school sports funding, **free of charge** to children.

This club takes place from 3.30pm – 4.30pm from **Thursday 8th January to Thursday 12th February 2026 inclusive. We have a few spaces available.**

Should your child wish to join this club, please block book the sessions on **ParentPay**. No payment needed.

PARENTING SMART

Parenting can be joyful but also very hard. Each week we aim to bring you a link that may be useful to you to find your way. This week's short clip is about supporting a child during a bereavement.

[Supporting your child when someone dies | Place2Be's Parenting Smart \(youtube.com\)](#)

CHICKENPOX

Please be aware that we have a case of Chickenpox in school. Pregnant ladies may need to inform their GP. Thank you.

OPENING AND CLOSING TIMES

Please be on time for school drop off collection. The gate to the playground opens from 8:30am and the afternoon collection is 3:25pm. Following national regulations, children arriving after 8.45 are marked late and arrivals after 8.55 are classified as absent.

Early Birds and After School Clubs are available to support families and for emergencies.

PEDESTRIAN ACCESS

Please use the pedestrian access sign posted at the front of school. Please do not walk out through the car park. We must have a designated pedestrian pathway to protect drivers and pedestrians. Our priority is to keep everyone safe.

CAR ENGINES

Please be considerate to residents in the village and refrain from keeping engines running.

SAFEGUARDING CONCERNS

At school

If you have safeguarding concerns, please email admin@heslerton.n-yorks.sch.uk This will be responded to between the hours of 8.30 - 3.00 term time only.

Out of school

Out of school hours please contact, social.care@northyorks.gov.uk or call 0300 131 2 131 to speak to the Emergency Duty Team. You will receive a response within 24 hours. If you have safeguarding concerns for your family, neighbour or community member, whatever their age, if you believe the situation is urgent but does not require the police, please call 0300 131 2 131 to make a telephone contact.

In emergency

Where there are significant immediate concerns about the safety of a child, you should contact the police on 999

CAR PARKING

Please keep the top car parking space on High Street clear. This is to maintain the flow of traffic and to help with visibility for drivers.

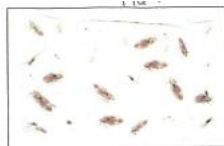
If you require this information in a different format, please contact the school office.

NITS

Please check your child.

Head Lice are NOT nice!

Please check your child's hair regularly



- Use a brush or an ordinary comb to first detangle hair.
- Once hair has been detangled, switch to the detection comb.
- Start at the middle of the front of the scalp.
- Comb the hair from the roots to the very end of the hair.
- After each stroke, examine the teeth of the comb for living lice.
- Rinse the comb if you find any.
- Continue combing section by section until you've done the whole head of hair.
- Make sure you cover every inch of the scalp, including the area just behind the ears and at the nape of the neck.

If you find lice treat your child's hair using a solution such as Full Marks, for information visit <http://www.headlice.co.uk/>

How can head lice infestation be prevented?

Head lice infestations cannot be totally prevented. The following may help prevent spread of head lice:

- Avoid sharing personal items that come in contact with hair, such as combs, hairbrush, hats, pillows or towels.
- Disinfect (clean) personal hair care items and bedding. Combs and hair brushes should be treated with pediculicides or soaked in hot water. Bedding sheets, pillowcases, towels and clothes should be washed in hot water or dry cleaned. Items that cannot be washed can be put in airtight plastic bags for two weeks.
- If your child has head lice, check all family members and friends who he has come into contact with. Treat those who have lice at the same time.
- Keep those who are infested with head lice from close, direct head contacts with others.
- Vacuum furniture, rugs, carpets, car seats or other fabrics.

Head lice can have a negative impact on a child's sleep, self-esteem, concentration and behaviour.

RELIEF TEACHING ASSISTANTS

We are always keen to hear from people who would wish to join our team. We are currently looking to appoint some relief teaching assistants. We'd love to hear from you if you'd like to assist in classrooms supporting teachers. There are no set hours for this role, we'll get in touch when we need cover in classes, at lunchtimes or after school. A clear DBS will be required for safeguarding reasons. Please contact the office for a person specification and application form.

Closing date for applications: 26th January 2026.

FOODBANK

We are an agent for Malton foodbank . This means that we are able to issue food vouchers. Please contact school in confidence if you need support.

READING PHOTO FUN

We'd love to see photos of your child and family enjoying reading. We'd love for everyone to spring into stories and books. Please send us your photos. You may read snuggled on the sofa, in the car or even hugging a pet! We'd love to display these in our entrance hall to spread the joy of reading to pupils, staff and those visiting school. Please email photos to admin@heslerton.n-yorks.sch.uk



HELP WITH GAS AND ELECTRIC

Unity in Community are a charity based in Hull who aim to support the most vulnerable people in society. As the cost of living continues to rise, we are aware that many people will be struggling to make ends meet. Unity in Community are able to support households with fuel vouchers. These vouchers are sent via text message. We would like to offer this support to the parents, carers and guardians of students who attend Heslerton school.

Help Available: Unity in Community will be providing vouchers to help towards paying for gas and electricity. To qualify you must pay for your energy through a **prepayment meter** and have **not received energy vouchers from Unity in Community** within the past 12 months. Beneficiaries can be working, unemployed, self-employed or retired. For more information and to register, call **01482 420836**, Monday to Friday, 9am – 3pm – if busy, please keep trying.

If you require this information in a different format, please contact the school office.