



West Kidlington
Primary & Nursery School
Be kind, give your best!

WEST KIDLINGTON GOVERNOR ATTENDANCE UPDATE

Dear Families

At West Kidlington, we are committed to ensuring that every child has the opportunity to achieve their full potential. One of the most important factors in a child's success is excellent attendance. Our Governors have looked into these figures as this is an area the school is judged on.

Why is Attendance So Important?

Children learn best when they attend school regularly. Every lesson builds on previous learning, and missing school can make it difficult for children to keep up with their classmates.

Good attendance helps children to:

- Make strong academic progress.
- Develop confidence and independence.
- Build friendships and social skills.
- Establish positive routines and habits for life.
- Feel connected to their school community.

Even occasional absences can have a significant impact on learning. Missing just one day every two weeks adds up to around four weeks of lost learning across a school year.

Being on Time Matters as well

Arriving at school on time is just as important as attending every day.

Children who arrive late:

- Miss important morning learning activities.
- Can feel unsettled or anxious joining lessons already in progress.
- Miss opportunities to socialise with friends before lessons begin.

A few minutes late each day can quickly add up to hours of lost learning over the course of a term. Please help your child arrive at school ready to learn, with enough time to settle into their classroom before the start of the school day.



Here are some simple strategies that can make a big difference:

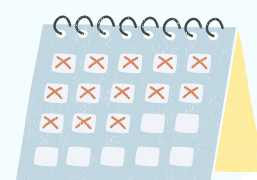
- Establish strong morning routines.
- Set a consistent bedtime and wake-up time.
- Remember 8.30pm is too late for children to be on a screen!
- Prepare school uniforms, bags and packed lunches the night before.
- Use alarms or reminders to help everyone stay on schedule.
- Ensure children get enough sleep.
- Promote healthy eating and hydration.
- Attend routine medical and dental appointments outside school hours whenever possible.

Plan Ahead

- Check school calendars regularly.
- Read the newsletter.
- Arrange childcare and transport plans in advance.
- Have a backup plan if your usual arrangements change unexpectedly.

Support Positive Attitudes Towards School

- Talk positively about learning and school experiences.
- Encourage children to share any worries they may have so support can be provided quickly.



If you're 15 minutes late every day you lose two weeks of learning by the end of the school year

Seek Support Early

If your child is finding attendance difficult for any reason, please contact the school as soon as possible for support. **We want to help.**

Holidays and Family Time

We understand how valuable family time is. However, we strongly encourage families to arrange holidays during the official school holiday periods.

Taking holidays during term time means children miss valuable learning experiences that cannot always be replicated or caught up easily. It can also affect friendships, routines and confidence when returning to school.

By planning holidays during school breaks, children can enjoy quality family time without missing important lessons and experiences. We recognise many of our families visit relatives in other countries and have connections with another speaking language; keeping this link is respected but we do not want children missing learning, so we ask that these visits do not take place in school term time.

Working Together

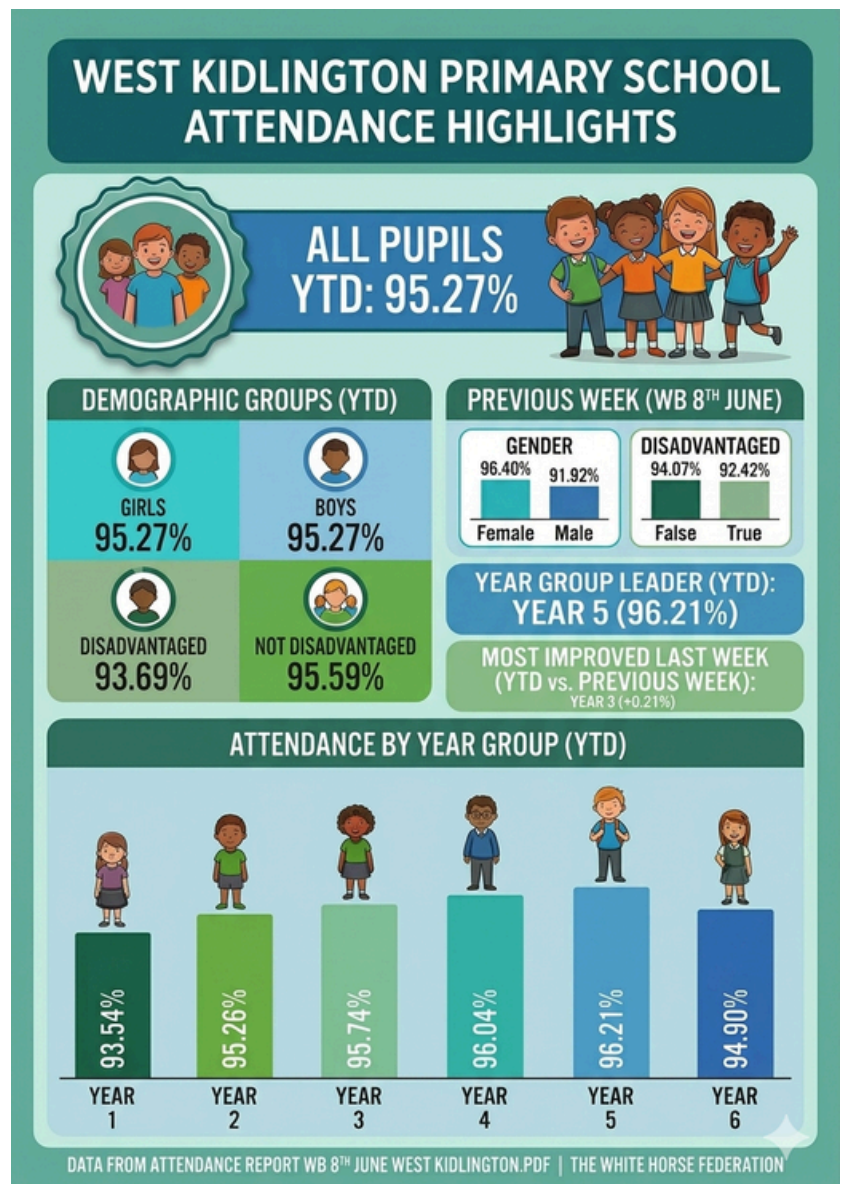
The Governors and staff thank you for your continued support in helping every child attend school regularly and arrive on time each day. By working together, we can ensure all children have the best possible opportunities to learn, grow and succeed.

Remember: Every Day Counts, Every Minute Matters!

West Kidlington Governors

This year's attendance report—what's the view on our attendance so far?

- YTD - Year to date
- Disadvantaged children refers to those pupils who face such social or cultural hurdles that without extra help, they might struggle to keep up with their peers in the school.



90% attendance may look impressive but it means missing 19 days of education a year

Sports Day 2026

- two events so well organised
- children having fun
- vulnerable children achieving
- children who don't like sports day getting stuck in
- An incredible cafe ran by the Friends group - THANK YOU!
- staff caring and guiding
- parents happy
- nobody being over competitive



Thank you to Jack R's Grandad for fixing our bikes in nursery. We really appreciated his time and completing so quickly.





Well done