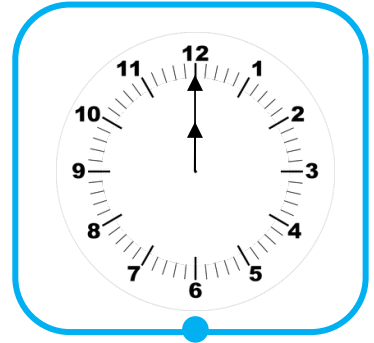
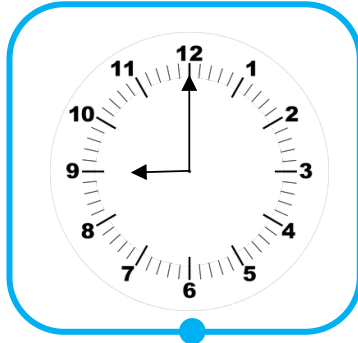
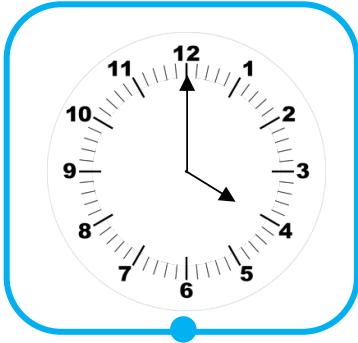




Draw a line to match the clocks to the times.

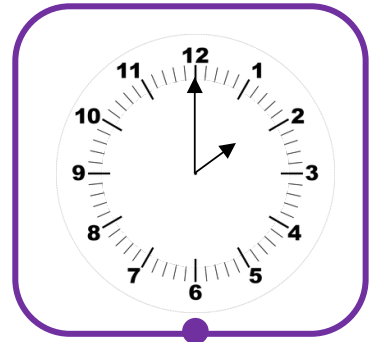
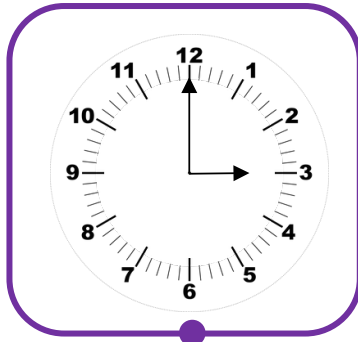
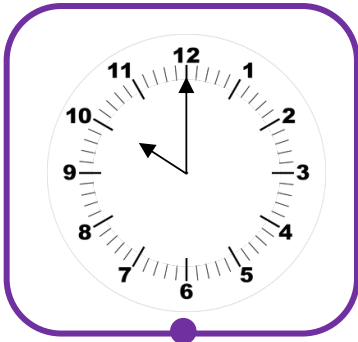
Recognise time to the hour



9 o' clock

12 o' clock

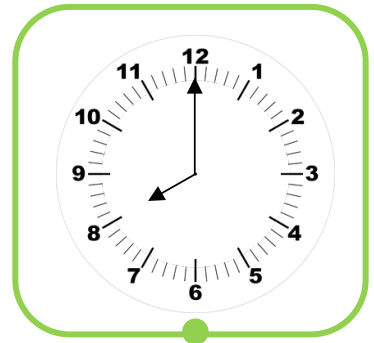
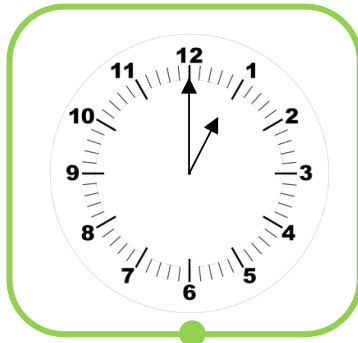
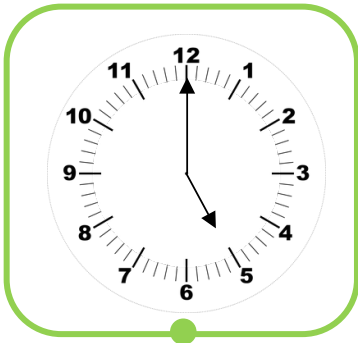
4 o' clock



3 o' clock

10 o' clock

2 o' clock



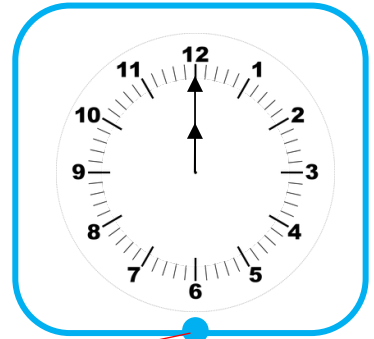
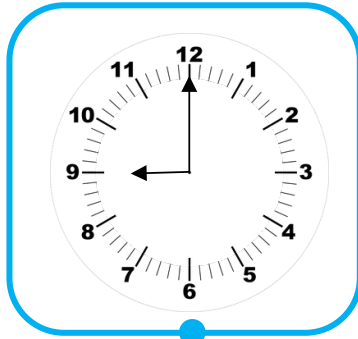
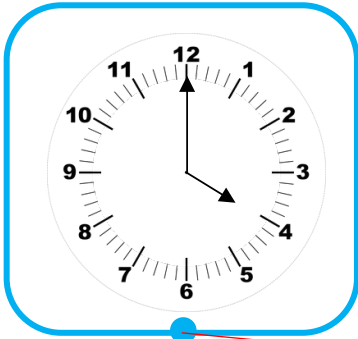
1 o' clock

8 o' clock

5 o' clock



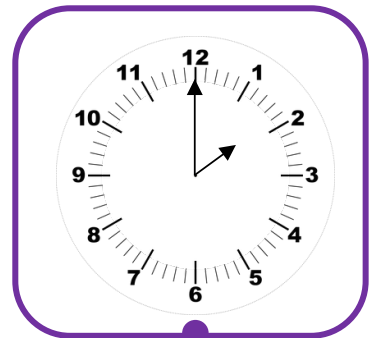
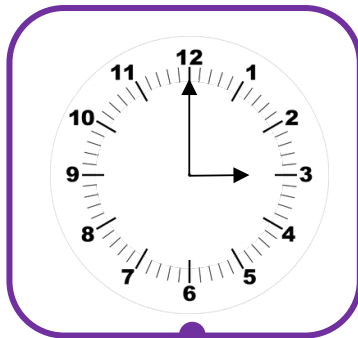
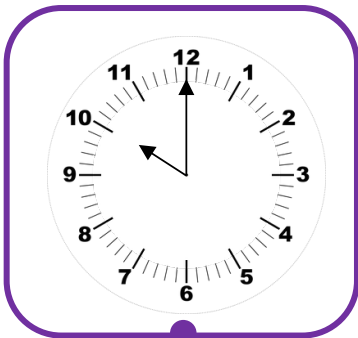
# Answers



9 o' clock

12 o' clock

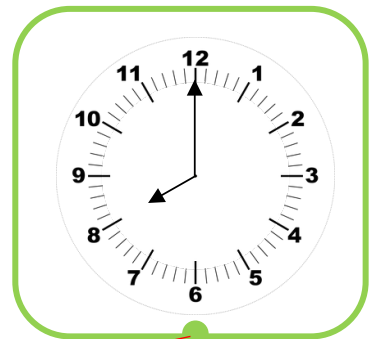
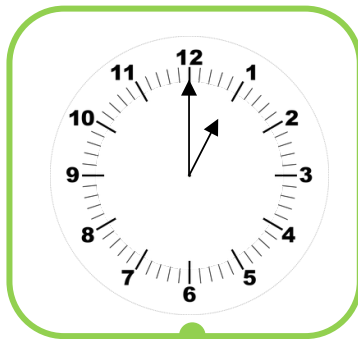
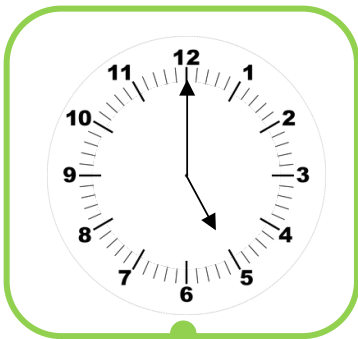
4 o' clock



3 o' clock

10 o' clock

2 o' clock



1 o' clock

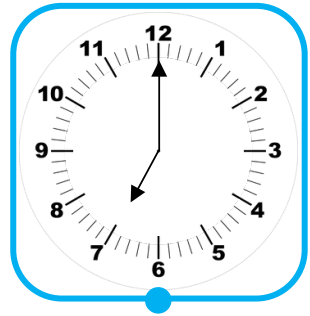
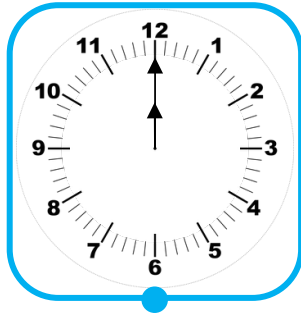
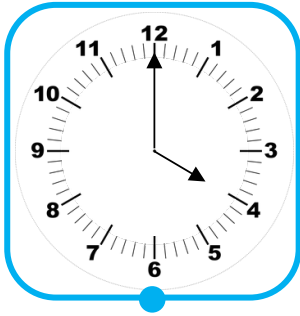
8 o' clock

5 o' clock



Draw a line to match the clocks to the times.

Recognise time to the hour

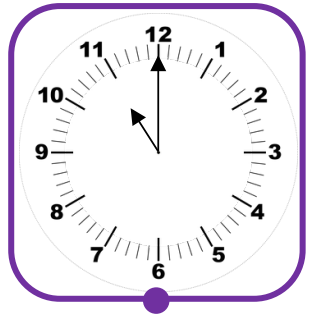
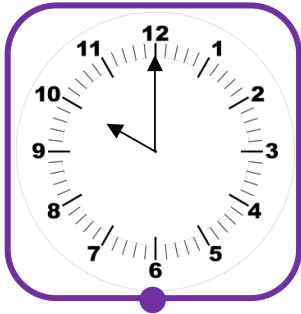
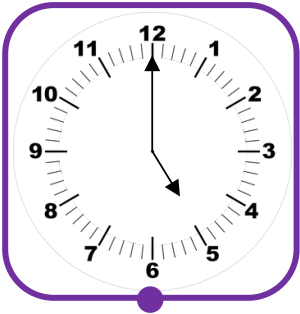


9 o' clock

12 o' clock

4 o' clock

7 o' clock

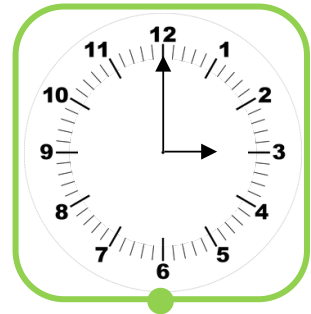
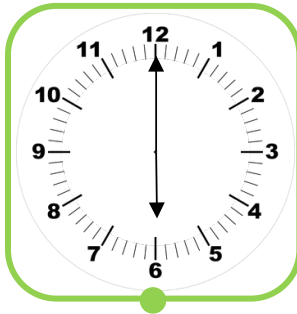
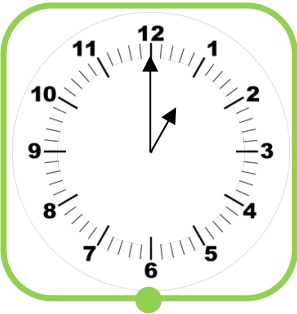


11 o' clock

2 o' clock

5 o' clock

10 o' clock

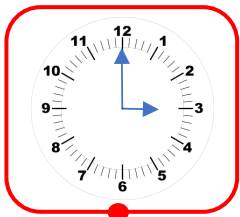


12 o' clock

3 o' clock

1 o' clock

6 o' clock



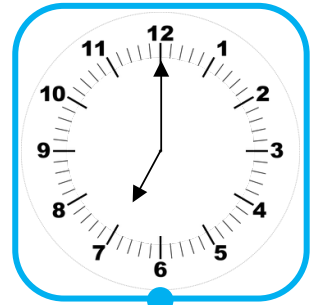
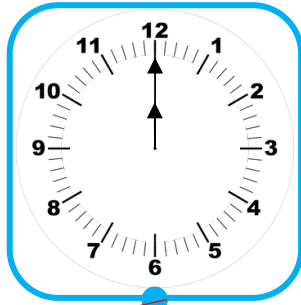
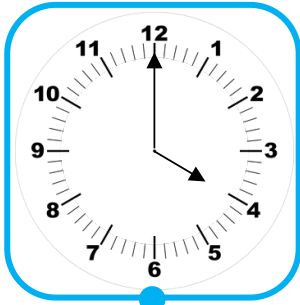
Lee has matched this clock and time. Is he correct?  
Discuss or write your answer.

12 o' clock

Large empty box for writing an answer.



# Answers

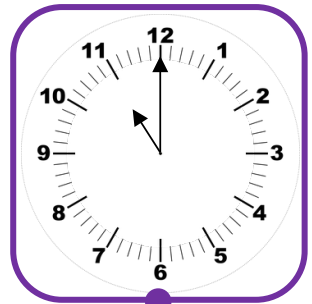
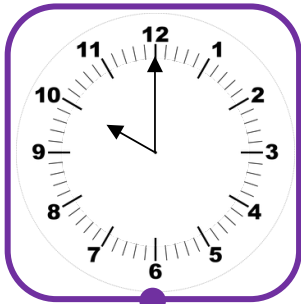
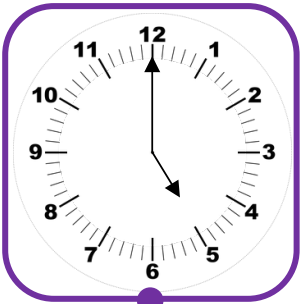


9 o' clock

12 o' clock

4 o' clock

7 o' clock

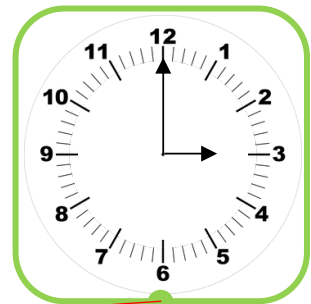
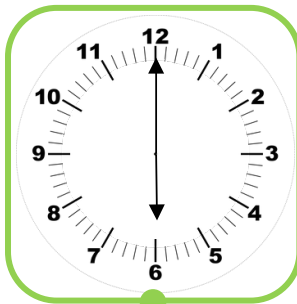
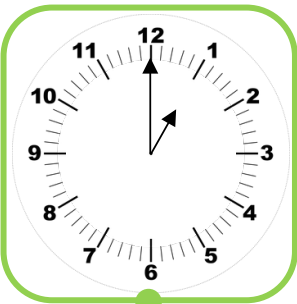


11 o' clock

2 o' clock

5 o' clock

10 o' clock

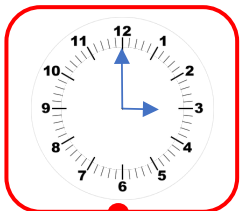


12 o' clock

3 o' clock

1 o' clock

6 o' clock



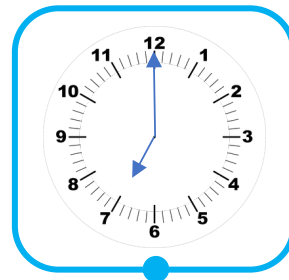
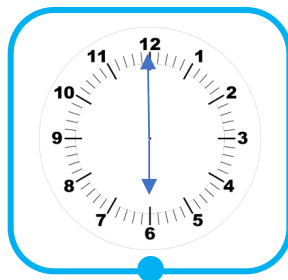
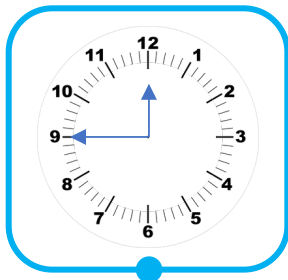
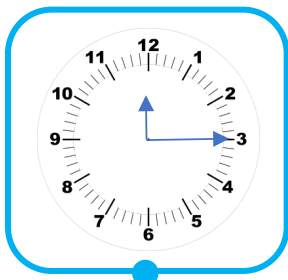
Lee has matched this clock and time. Is he correct?  
Discuss or write your answer.

12 o' clock

No, because this time says 3 o' clock.



Draw a line to match the correct clocks to the times. There are some incorrect times! Discuss why they are incorrect.

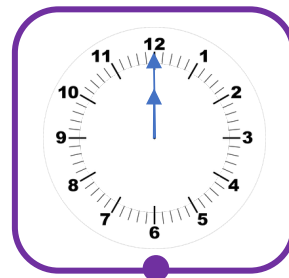
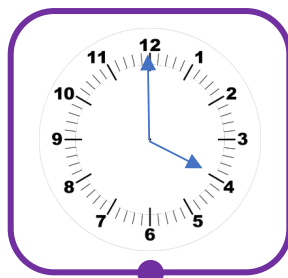
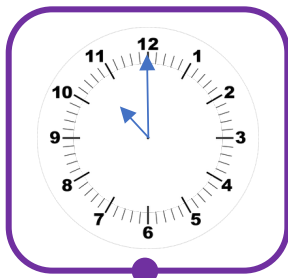
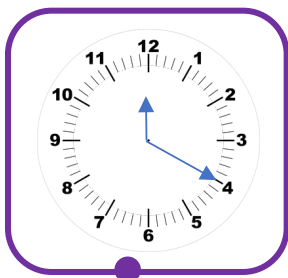


9 o' clock

3 o' clock

7 o' clock

6 o' clock

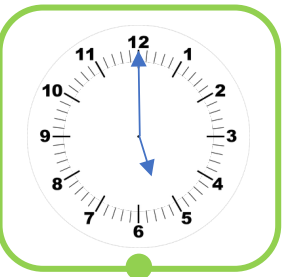
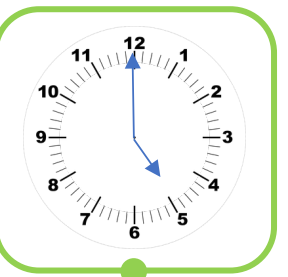
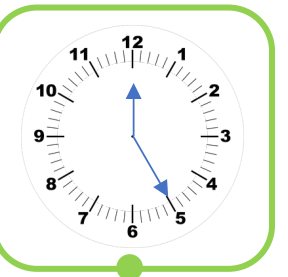
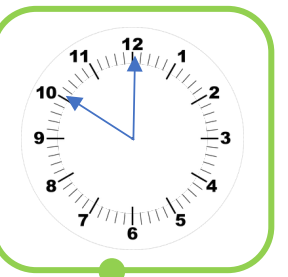


4 o' clock

11 o' clock

12 o' clock

2 o' clock

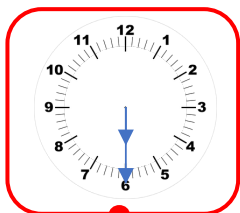


1 o' clock

5 o' clock

8 o' clock

10 o' clock



6 o' clock

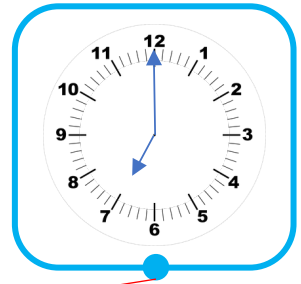
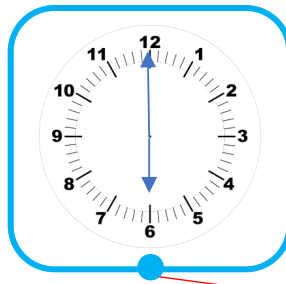
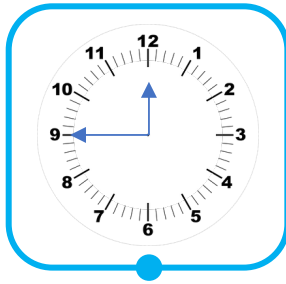
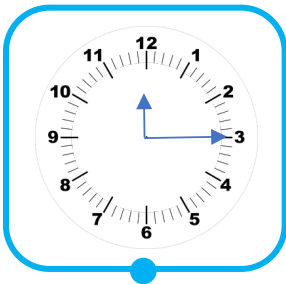
Lee has drawn this clock and matched it to this time. Is he correct? Discuss or write your answer.

Blank area for writing an answer, enclosed in a blue speech bubble shape.



Draw a line to match the correct clocks to the times. There are some incorrect times! Discuss why they are incorrect.

### Answers

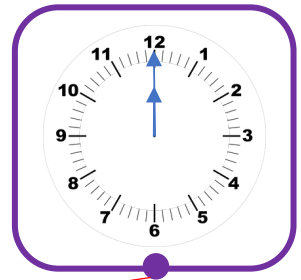
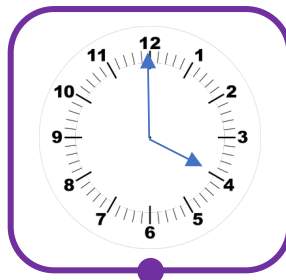
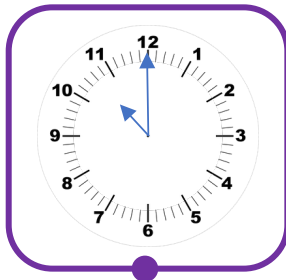
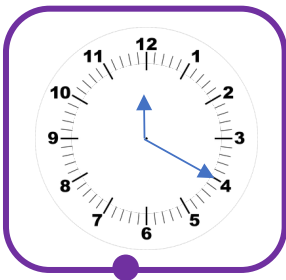


9 o' clock

3 o' clock

7 o' clock

6 o' clock

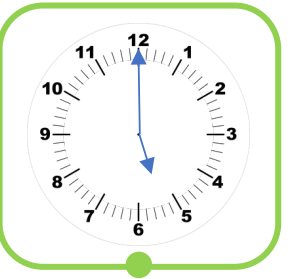
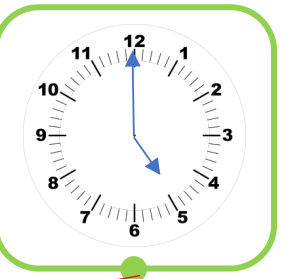
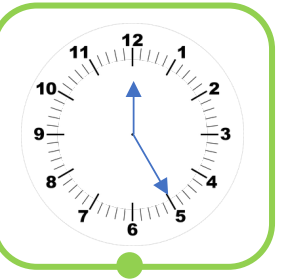
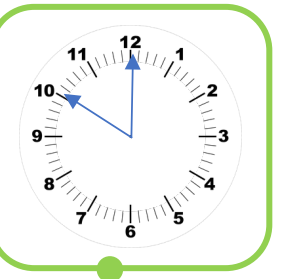


4 o' clock

11 o' clock

12 o' clock

2 o' clock

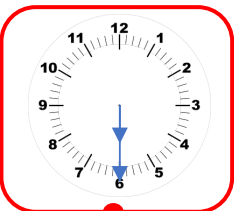


1 o' clock

5 o' clock

8 o' clock

10 o' clock



6 o' clock

Lee has drawn this clock and matched it to this time. Is he correct? Discuss or write your answer.

No, because the minute hand needs to be on the 12.