



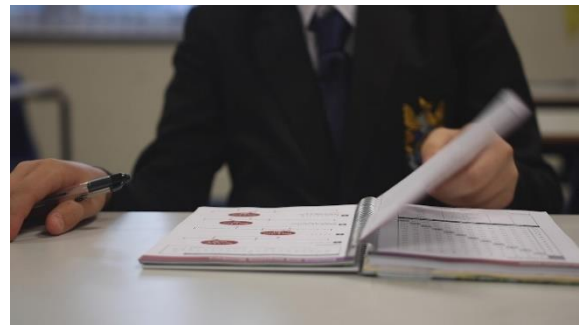
A GUIDE TO YOUR SON'S ASSESSMENT REPORT AT WEST HILL SCHOOL

Professional Projection KS4

The KS4 Projection is an indication of the GCSE grade that your son may achieve if he continues to work as he is.

KS4 Target

To help you measure how well your son is doing, he is set an aspirational target for the end of Year 11. Boys may not always reach their target but the expectation is that they aim high and work hard towards it.



National Reporting of Grades

GCSEs are graded 1 – 9, with 9 being the highest grade.

BTECs and National Certificates are graded at Level 1 Pass - Level 2 Dist*, with Level 2 Dist* being the highest.

More information on the grading system can be found at:

<https://ofqual.blog.gov.uk/2018/03/02/gcse-9-to-1-grades-a-brief-guide-for-parents/>

