

Week 31



Wistaston Weekly

Friday 16th May 2025

Next Friday, we are excited to be celebrating 30 years of the Friends of WCLA! This wonderful group is made up of parents, carers, and grandparents of the children in our school—everyone is welcome to be a Friend. Over the years, the Friends have organised many fantastic events, from discos to film nights, bringing fun and smiles to our school community. They also play a vital role in raising much-needed funds, helping to provide water bottles for new starters, leavers' gifts, outdoor play equipment, laptops, new books, and library furniture. To mark the occasion, next Friday will be a non-uniform day—no contribution needed, just enjoy wearing your own clothes. Be ready... there may even be a birthday surprise!



A huge thank you to everyone who has supported the Friends over the last 30 years—here's to many more!

Kind regards

Mrs Elsley

Principal

Useful Dates for Diary

Further details are shared nearer to the time.

Any new dates added to this will be highlighted in green.

Important dates can also be found on the School Calendar at:

<https://www.wclacademy.co.uk/calendar>

Week commencing 12th May	Saturday 17 th	Macclesfield Bikeathon – ‘Just Drop In’ Family Cycle Ride (See below for details)
	Saturday 17 th	Cheshire College South & West Community Fun Day
Week commencing 19th May	Tuesday 20 th	Year 1 Legoland Discovery Centre
	Tuesday 20 th	Year 5 Parent Assembly (2:30pm)
	Wednesday 21 st	Reception & Year 6 Height & Weight Checks (AM)
	Wednesday 21 st	Reception Hearing & Vision Recalls (AM)
	Wednesday 21 st	National Number Day
	Friday 23 rd	Non-Uniform Day for Friends’ 30 th Celebrations
Week commencing 26th May	Mon 26 th – Fri 30 th	Half Term
Week commencing 2nd June	Mon 2 nd – Fri 6 th	Festival of Fiction Week
	Mon 2 nd – Fri 6 th	Year 4 Multiplication Check
	Monday 2 nd	Sandbach High visiting Year 6
	Monday 2 nd	Brine Leas visiting Year 6
	Tuesday 3 rd	Reception Parent Assembly (2:30-3pm)
	Tuesday 3 rd	Smart Uniform Click & Collect (3-3:30pm)
	Tuesday 3 rd	Year 4 (Current Year 3) Whitemoor Lakes Information Evening (3:30pm)
	Thursday 5 th	Reception Runway Visitor Park Trip
	Thursday 5 th	Year 5 & 6 Timperley Shield (By invitation only; 12:30-3pm) – Postponed from 20 th March
	Thursday 5 th	St Thomas More Catholic High School Year 6 Transition Evening (5:30-6:30pm)
	Friday 6 th	SEND Drop In at Monks Coppenhall (1-2:30pm)
Week commencing 9th June	Mon 9 th – Fri 13 th	Year 1 Phonics Screener
	Monday 9 th	Reception Transport Day
	Monday 9 th	Malbank visiting Year 6
	Tuesday 10 th	Year 1 Parent Assembly (2:30pm)
	Tuesday 10 th	Year 3 & 4 Mixed Football at Crewe Alexandra in the Community (12:30-4pm) – By invitation to Lunchtime Football Club Members & first come, first served allocation.
	Thursday 12 th	EYFS Transition
	Thursday 12 th	September 2025 New Starters - Story in the Park
	Friday 13 th	Drop in with the Educational Psychology Team - Monks Coppenhall Family Hub (1-2:30pm)
	Saturday 14 th	Wistaston Community Fair and fancy dress parade
Week commencing 16th June	Monday 16 th	Year 4 Maya Workshop
	Monday 16 th	Town Sports Field Events (Invitation Only) 5-7:30pm (Reserve date is Monday 30 th June)
	Tuesday 17 th	Year 2 Parent Assembly (2:30pm)
	Wednesday 18 th	Town Sports Track Events (Invitation only) 5-8pm (Reserve date is Wednesday 2 nd July)
Week commencing 23rd June	Tuesday 24 th	Year 3 Parent Assembly (2:30pm)
	Tuesday 24 th	Year 6 Intake Evening at Brine Leas
	Tuesday 24 th	KS2 Inter-School Cross Country at Crewe Vagrants Sports Club (3:30-5pm) – Places allocated on a first come, first served basis.
	Tues 24 th – Weds 25 th	Year 6 Shavington Transition Days
	Tues 24 th -Thurs 26 th	Year 6 Malbank Transition Days
	Wednesday 25 th	Moving Up Morning
	Wednesday 25 th	September 2025 Cygnet New Starters Visit (10:40-11:40am)
	Wednesday 25 th	Year 4 Musical Performances – Mexico City (1:45-2:15pm) & Rio (2:30-3pm)
	Weds 25 th – Thurs 26 th	Year 6 Intake Days at Brine Leas
	Thurs 26 th – Fri 27 th	St Thomas More Catholic High School Year 6 Intake Days
Week commencing 30th June	Monday 30 th	Visitor from St Mary’s Church visiting Cygnets
	Tuesday 1 st	Year 4 Parent Assembly (2:30pm)
	Tuesday 1 st	Smart Uniform Click & Collect (3-3:30pm)
	Tuesday 1 st	Year 6 Reaseheath College Experience Day
	Wednesday 2 nd	Year 3 Portals to the Past Egyptian Workshop
	Wednesday 2 nd	Year 5 & 6 Pickleball Competition at Shavington Academy (3:30-5:30pm) – Selection by Random Draw
	Wednesday 2 nd	September 2025 New Starter Meeting (6:30pm)
	Thursday 3 rd	Sports Day (KS1 AM/KS2 PM) & Family Picnic over lunchtime
	Friday 4 th	EYFS Seaside Day (Seaside activities during the normal school day)
Week commencing 7th July	Monday 7 th	Year 5 Chester Zoo
	Monday 7 th	September 2025 New Starters Visit (2pm)
	Wednesday 9 th	Year 6 Production (2pm)
	Thursday 10 th	Year 5 Primary College
	Thursday 10 th	Year 6 Production (6pm)
	Friday 11 th	INSET Day – School will be closed to pupils.
Week commencing 14th July	Thursday 17 th	Cygnets Parent Assembly (2:30pm)
	Thursday 17 th	Year 6 Leaversfest (5:30pm – time TBC)
	Friday 18 th	Year 6 Leavers Assembly (9:30am)
Week commencing 21st July	Monday 21 st	INSET Day
	Tuesday 22 nd	INSET Day
	Wednesday 23 rd	Start of Summer holiday

Week Commencing 19th May will be WEEK 1 for lunches


MENU CHANGE FRIDAY 23RD MAY:

Main Dish - Sausage, Chips & Beans


Main Dish 2 - Veggie Sausage, Chips & Beans

Look out for our new summer menus coming soon!



WEEK 1		MONDAY	TUESDAY	WEDNESDAY	THURSDAY	TREAT FRIDAY
MAIN DISH		Margherita Pizza with wedges	Meatballs in tomato sauce with wholemeal pasta	Roast beef with roast potatoes Yorkshire pudding & gravy	Chicken korma with 50/50 rice	Crispy battered fish & chunky chips
MAIN DISH 2		"Veggie" curry with rice and Chapati	Cheese quiche served with Spanish potatoes	Vegetable cobbler with mashed potatoes	Sweet potato, cheese and onion pie with diced potatoes	Southern fried quorn burger with chunky chips
ACCOMPANIMENTS		Seasonal vegetables & Salad bar	Seasonal vegetables & Salad bar	Seasonal vegetables & Salad bar	Seasonal vegetables & Salad bar	Seasonal vegetables & Salad bar
JACKET POTATO/ SANDWICHES		Jacket potato with cheese or beans Or Cheese bap	Jacket potato with cheese or coleslaw Or Tuna wrap	Jacket potato with tuna or beans Or Roast beef pitta	Jacket potato with curry or beans Or Ham bap	Jacket potato with cheese or beans Or Turkey & salad wrap
DESSERTS		Chocolate brownie	Marble sponge with custard	Strawberry mousse	Ginger biscuit	Chocolate muffin
FRESH FRUIT & YOGHURT		Freshly cut fruit or yoghurt	Freshly cut fruit or yoghurt	Freshly cut fruit or yoghurt	Freshly cut fruit or yoghurt	Freshly cut fruit or yoghurt



MENU



Fuel your afternoon with a healthy school lunch from Mellors

 - 1 OF YOUR 5 A DAY
 - HEALTHY OPTION

What's New!

Year 6 SATs Week

A big well done to all of Year 6 for completing the SATs this week.

Year 2 will complete their SATs as part of their normal end of year assessments in June.



Safe Parking

Please remember that parking on the grass verge and double yellow lines when dropping off and collecting children from school is not permitted. This is to ensure the safety of all at these busy times of day. The local PCSOs are aware of parking issues and will be monitoring for obstructions and dangerous parking.

Summer Term Timetable Feedback

We'd love to hear your thoughts on the new Summer Term timetable and whether your child has shared any feedback about the changes at home. Please take a moment to share your views using the feedback form linked below – your input is greatly valued as we continue to develop our approach. Please submit by **Friday 23rd May**. We will repeat this survey later in the Summer Term but would welcome your initial thoughts.

Many thanks

<https://forms.office.com/e/WPqWT78fzu>

After School Clubs

After school clubs will run as normal week commencing 19th May. Please note however, that Year 6 Maths Booster has now finished.

Reception & Year 6 Height and Weight Checks – Wednesday 21st May

The checks will be carried out during the normal school day. Afterwards, any recalls from the Reception Vision and Screening will also be carried out. These will again take place during the normal school day.

Half Term


School will close after the normal school day on Friday 23rd May and will reopen as normal on Monday 2nd June.

Class & Year 6 Leavers Photographs

Proofs of the class and Year 6 leavers photographs were sent home with pupils last week. Orders should be placed online at www.academyphotos.co.uk (or handed in at the school office) **before 9am on Wednesday 21st May**. Full details are included with the proofs.


Cheshire East SEND Partnership Local Marketplace - Wednesday 21st May

Please see below details of the next SEND Local Marketplace session for parents and carers that is taking place at The Berkeley Academy:




Cheshire East SEND Partnership

Local Offer Marketplace



We are pleased to bring together services from across the SEND partnership to provide advice to parents of children with additional needs. This drop-in will allow you to gain an initial understanding of what those services offer and then request more support at a future date.

Time with each practitioner will be limited to 10 minutes per family at this 'getting advice' event so please arrive early to avoid disappointment. Last entry will be at 30 minutes before closing.



The Berkeley Academy
Laidon Avenue, Crewe
CW2 6RU

Wednesday 21st May
2.30pm-4.30pm

Wistaston Community Fair – Saturday 14th June

Don't forget, we are excited to again invite all families to this year's Wistaston Community Fair on **Saturday 14th June**. As part of the celebrations, we have been asked to take part in the annual Fancy Dress Parade.

If your child would like to take part, please confirm your consent under *Clubs* on Arbor to register their place. On the day, we will meet at approximately 1pm (TBC) in the school car park before joining the parade to walk to the main fair showground. Of course, once the parade is finished you will be able to stay and enjoy all the fun of the fair. We hope to see you there!

Please see below for further details:

Wistaston Community News & Events



Village Fete Fancy Dress



Prize for the best costume

Participants to meet on the school car park at 1.30pm to join in the parade. Judging takes place at 2pm in the main arena.

The Theme this year is
Cartoon/Animation /Disney







[Button Battery Safety](#)

Please see below some information to help keep children safe from the hazards of button batteries:

Button batteries can badly hurt or kill a small child if they swallow one



Look

around your home for button batteries. Think toys, lights, remote controls and more.



Check

for products with loose backs and button batteries that have dropped out.



Store

button batteries in a safe place, up high and out of your child's reach.



Dispose

of used button batteries as soon as you can. They are still unsafe.



Act

If you think your child may have swallowed a button battery, go straight to A&E or call an ambulance.



capt.org.uk

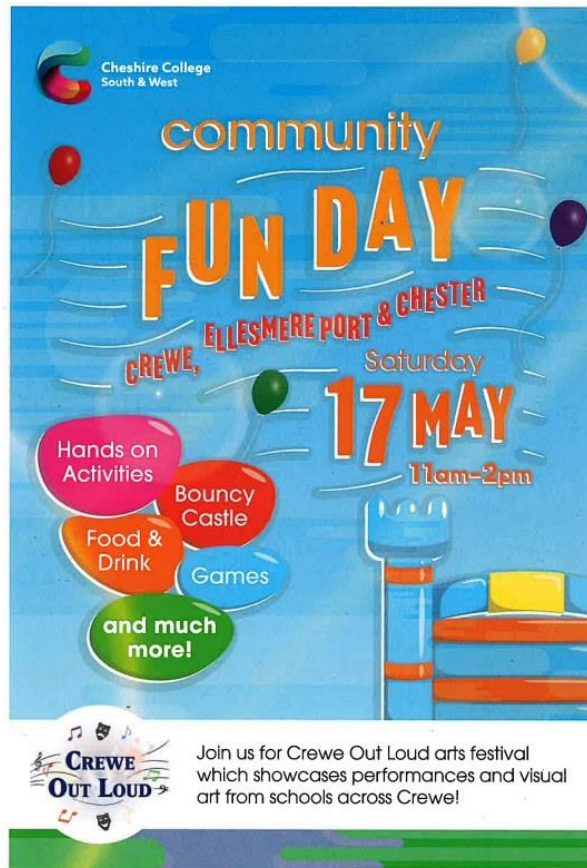
[@ChildAccidentPreventionTrust](https://www.facebook.com/ChildAccidentPreventionTrust)

[@capt_charity](https://www.instagram.com/capt_charity)

child accident
prevention trust

Cheshire College South & West Community Fun Day

Please see below details of Cheshire College's Community Fun Day on Saturday 17th May:



Arbor Information

To ensure school has up-to-date contact information in case of an emergency, please check your child's Arbor account and inform school immediately by email of any changes or errors. Please also ensure that all consents (e.g. Local Area Visits, photographs, walking home, mobile phones, etc) are up to date and contact the school office if you have any issues. Thank you.

Sports Coaching Group Holiday Clubs

Please see below details of the holiday clubs that will be run by SCG over half term. Please note that these do not show on Arbor and have to be booked directly through SCG at:

Holiday Club Booking Link:

<https://sports-coaching-group.classforkids.io/camp/362>



SPORTS COACHING GROUP

Tommy's May-day MYSTERY
Who is his new friend?
Holiday clubs

WHEN? May 27th - 30th

WHAT? Multi-Sports

TIME: 8.45am-3.15pm
(Early drop-offs and late pick-ups available)

Childcare Vouchers and Tax-free Childcare accepted!

NERF THEME DAYS

PARTY DAY
30th MAY

SCAN TO BOOK

Ofsted Registered

sportscoachinggroup.co.uk

SCG now have WhatsApp Channels in place for all of their services, including after school clubs, childcare, and holiday clubs. These are used regularly by staff to share updates, photos, and short videos, giving parents a great insight into what their children have been getting up to:

WhatsApp Channel Link:

<https://whatsapp.com/channel/0029VazoBhCL2AU6u0twLS1p>

If you experience issues with booking, please contact SCG directly at holidays@sportscoachinggroup.co.uk or by phone at 01270 449770.

Lunch Payments & KS2 Snack

If you have children in years 3, 4, 5 & 6, would like them to have snack each half term, please confirm consent and make payment via the *Trips* section on Arbor. Snack is charged at £5.10 per child for each half term. KS2 Snack for this half term shows as *KS2 Snack Summer 1 2025* and next half term shows as *KS2 Snack Summer 2 2025*.

When topping up meal accounts, please be mindful that we are unable to refund any balances remaining at the end of the school year.

School Office Closure

Please be aware that the school office will be closed on Tuesdays from 1pm until 3pm for the next few weeks. Apologies for any inconvenience caused.

Easyfundraising

Thank you to everyone who is supporting us for free on #easyfundraising. Your continued support means the world to us!

Your online shopping at over 8,000 retailers can raise free donations for Wistaston Church Lane Academy! Whether you're buying your weekly food shop, renewing car insurance, or generally shopping online, you can support us. Sign up to #easyfundraising via the link for free, and we'll get a £5 bonus when you raise your first £5. Sign up now:

<https://join.easyfundraising.org.uk/wistastonchurchlaneacademy/c9kbjl/c2s/N5Znntup/Q1253/facebook/>

School Lottery

The Friends of Wistaston Church Lane Academy would like to say a huge thank you to everyone who has signed up to our school lottery over the last few weeks. For further information on how to join our lottery and support our school, please visit:

https://www.yourschoollottery.co.uk/lottery/school/wistaston-church-lane-academy?utm_campaign=cause-page-social-share&utm_source=cause-page&utm_medium=social&utm_content=Hyperlink

SUPPORT OUR LOTTERY TODAY

- £1 per week
- Weekly cash prizes
- £25,000 jackpot

How it works...

It's simple—choose 6 numbers between 0-9 and if they match the weekly lottery draw, you win great prizes. One of our players will win a cash prize every week, maybe even the £25k jackpot! Tickets cost just £1 per week and the proceeds are donated to Wistaston Church Lane Academy.

Every Saturday at 8pm the numbers are drawn and posted online. Winners are notified by email and winnings paid into the account of your choice.

The easiest way to join our lottery is online by direct debit or debit card.

It's so easy to join and will make a real difference to Wistaston Church Lane Academy

Splitting the £1.00

- 40p goes to our school
- 36p goes to cash prizes
- 20p goes to admin costs
- 4p goes to VAT

The Maths... 100 tickets sold a week means

- = £30 weekly cash prize
- = £2,080 a year for our school

Buy A Ticket

GambleAware 18+

Payment Due Dates

KS2 Snack Summer 1 – Payment now due

Year 4 Mayan Workshop – Payment due by 16/05/25

Year 5 Primary College – Payment due by 16/05/25

Year 6 (Current Year 5) London 2025 – 4th payment of £100 due by 31/05/25

Year 3 Portals to the Past Egyptian Workshop – Payment due by 02/06/25

Year 5 Chester Zoo – Payment due by 12/06/25

Year 6 (Current Year 5) London 2025 – Final Balance due by 03/07/25

Year 4 (Current Year 3) Whitemoor Lakes DEPOSIT ONLY – Payment due by 17/07/25