



Wootton Wawen  
C of E Primary School



Inspiring Educational Excellence for Everyone  
**ARDEN**forest  
C of E Multi Academy Trust

Friday 28<sup>th</sup> February 2025

# NEWSLETTER

*Nurture, Inspire, Achieve!*

**"Just as a body, though one, has many parts, but all its many parts form one body, so it is with Christ." - Corinthians 12**

Dear Parents,

This week, our focus in Collective Worship has been on the powerful teaching from Jesus about the mustard seed. We have explored how; even a tiny seed can grow into something beautiful and strong, just as faith, no matter how small, can lead to and **achieve** wonderful things. The children have reflected on what this means for our school community, recognising that, like the mustard seed, each of them brings something unique and valuable to our shared space.

To bring this reflection to life, we have been **inspired** to create a beautiful **Mustard Seed Tree** in the school corridor. Each child has contributed their own unique leaf, symbolising that they are treasured individually for who they are. Together, these leaves form a tree that represents a safe and beautiful place where we all belong and grow together, **nurturing** one another in kindness and support.

We are so proud of how the children have embraced this message and have come together as a community, celebrating their individual gifts and the strength of unity. As we continue this journey together, we hope the spirit of the mustard seed continues to inspire and guide us.

Each child has been given their own mustard seed to plant. They will nurture and look after it to show that with these elements, the seed will flourish into something great.

Thank you for your continued support and partnership. Kind wishes Karen O'Shea



01564 792574



[www.woottonwawenprimaryschool.co.uk](http://www.woottonwawenprimaryschool.co.uk)



SCAN ME



Wootton Wawen  
C of E Primary School



Inspiring Educational Excellence for Everyone  
**ARDEN**forest  
C of E Multi Academy Trust

# NEWSLETTER

**We have a position for a Midday Supervisor starting on 31<sup>st</sup> March. If you are interested in this position or know someone who might be, please let our office team know.**



This is our new stained- glass cross, which is a beautiful, new addition to the school hall. It reminds us of our Christian Distinctiveness.

Mrs Coldicutt has utilised the creative gifts that have been given to her.



Our Mustard Seed Tree was created by Mrs Coldicutt and the children of Wootton. I am sure you will agree that it is a wonderful asset to the school entrance. Next time you come into school, see if you can spot the birds nesting safely within the branches.



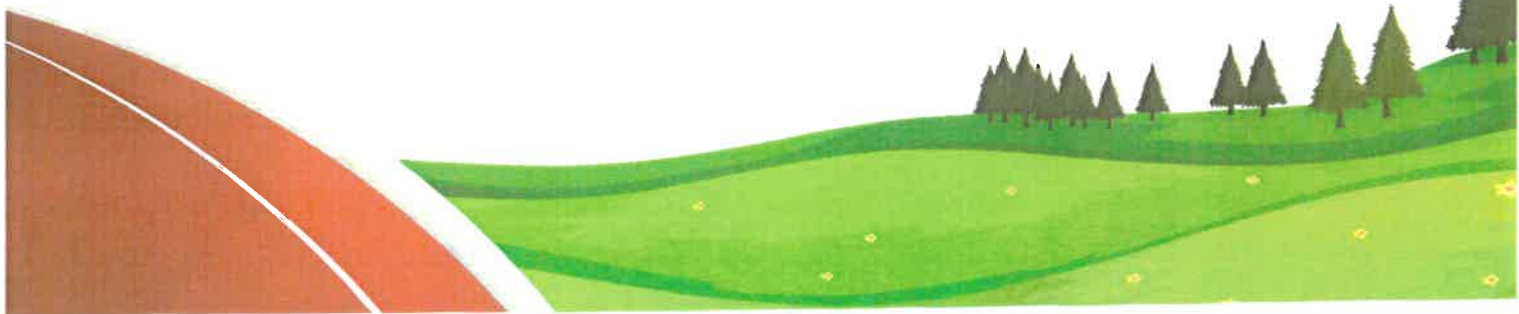
01564 792574



[www.woottonwawenprimaryschool.co.uk](http://www.woottonwawenprimaryschool.co.uk)



SCAN ME





**Wootton Wawen**  
C of E Primary School



Inspiring Educational Excellence for Everyone  
**ARDEN forest**  
C of E Multi Academy Trust

**Our School Houses and  
House points this week**

# NEWSLETTER

Falcons (Yellow)

101



Well done to Team  
Buzzard,  
Mrs Woods,  
Mrs Agar and Mrs  
Hogg



Buzzards (Blue)

112

Red Kites (Red)

111



Hawks (Green)

109

Stars of the week



A huge well done for displaying great Reading skills goes to: Harry B, Lyssia B, Darcey B, Myla C, Dexter O, Ademide A, James M, Thomas A, Esmae FB and Cora S

**You are doing a great job of inspiring others!**



01564 792574



[www.woottonwawenprimaryschool.co.uk](http://www.woottonwawenprimaryschool.co.uk)



SCAN ME





# NEWSLETTER

## Hatton Locks

Sycamore Class went to Hatton Locks as part of their learning about Water.

Here is what some of the children said:

"We got to build mini versions of the lock gates with wood and magnets. That was really interesting."

"We got to go inside a lock and see the gate which was being constructed and we saw what it looks like without water. They were five meters deep. You cannot get one centimetre of measurement wrong otherwise the gates would not work properly."

"The most interesting thing that they found in Hatton Lock when they drained it was a bomb from the war."

"There are 21 Lock Gates at Hatton and we got to go in a canal boat. Babies had to sleep in drawers as they didn't have cots." Horses pulled the boats along the canals in the past."

Thank you; Ava, Myla and Hannah for your insight into the day and sharing your learning. They also said they would recommend the trip to other schools and so enjoyed their day there.



## Attendance Corner

Our school attendance target is **96%** - this week our total was **95.6%** which is **fabulous news- Well done to everyone.**

Oak class—97.3%

Chestnut class— 90.7 %

Willow class- 97.8%

**Sycamore class were the winners with 98.9% Well done!**



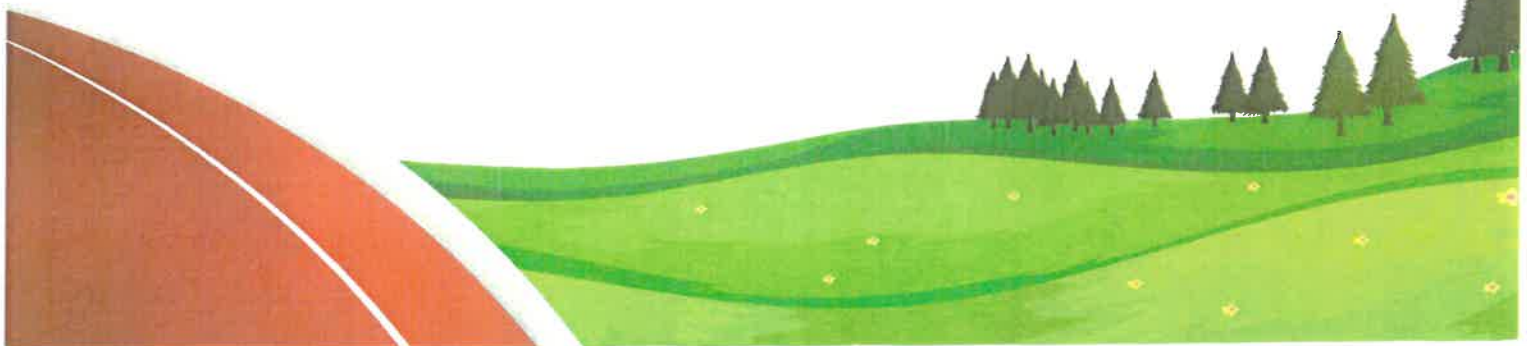
01564 792574



[www.woottonwawenprimaryschool.co.uk](http://www.woottonwawenprimaryschool.co.uk)



SCAN ME





**Wootton Wawen**  
C of E Primary School



Inspiring Educational Excellence for Everyone  
**ARDEN forest**  
C of E Multi Academy Trust

# NEWSLETTER

Dates for your diary

## Half Term (Saturday 15/2/25 until Sunday 23/2/25)

|                   |   |
|-------------------|---|
| Thursday 06/03/25 | World Book Day- children to dress up as their favourite book character  |
| Friday 14/03/25   | 2:40 Spirituality Day shared learning worship- all parents welcome  |
| Monday 17/03/25   | Class Photographs   |
| Thursday 20/03/25 | Parents Evening (detailed information to come via Studybugs nearer the time)  |
| Friday 21/03/25   | Red Nose Day (80's theme/ dress down/ red nose T shirt day) a donation to school via Parent Pay would be most appreciated |
| Monday 31/03/25   | 2:40 Willow Class Assembly (parents welcome)  |
| Thursday 03/04/25 | Whole school to Coventry Cathedral- Easter Workshops  |
| Thursday 10/04/25 | 9:30 Easter Service at St Peter's Church (parents welcome)  |
| Friday 11/04/25   | 2:40 Celebration Assembly (parents welcome)   |

## Easter Holiday (Saturday 12/04/25 until Sunday 27/04/25)

|                                       |   |
|---------------------------------------|---|
| Monday 28/04/25                       | Children return to school   |
| Monday 05/05/25                       | Bank Holiday  |
| Monday 12/05/25-<br>Thursday 15/05/25 | Yr 6 SATs start – it is essential that all Year 6 children are in school during this week |
| Friday 23/05/25                       | 2:40 Celebration Assembly -all parents welcome  |

## Half Term (Saturday 24/05/25 until Sunday 01/06/25)

|                 |                           |
|-----------------|---------------------------|
| Monday 02/06/25 | Children return to school |
|-----------------|---------------------------|



01564 792574



[www.woottonwawenprimaryschool.co.uk](http://www.woottonwawenprimaryschool.co.uk)



SCAN ME



