



Wootton Wawen
C of E Primary School



Inspiring Educational Excellence for Everyone
ARDENforest
C of E Multi Academy Trust

Friday 20th September 2024

Nurture, Inspire, Achieve!

NEWSLETTER

“Just as a body, though one, has many parts, but all its many parts form one body, so it is with Christ.” - Corinthians 12:12

What a fabulous couple of weeks we have had! We are back in the midst of busy days and lots of learning. Sycamore have begun their topic on Coventry Blitz and are enjoying

Goodnight Mister Tom. Chestnut Class are exploring Invaders and Willow class are learning about Far, Far away... Oak class have settled really well now and are enjoying learning about all things Autumnal. Each classroom has been brimming with excitement! We had our 'Meet the Teacher' event last week so hopefully you are up-to-date with what to expect for your child this year. Don't forget that class teachers are your first port of call if you have any questions or queries about your child and their learning. The mornings are often very busy for class teachers, so please make an arrangement to talk to the teacher at a mutually agreed time. A little reminder that the gates close promptly at 8:55am so please ensure your child is in class before this time. Have a lovely, relaxing

weekend!

Miss Jones

Attendance Corner

Our school attendance target is **96% and** we love seeing the children each day! This week, Sycamore, Chestnut and Willow class all achieved attendance above our target—well done!

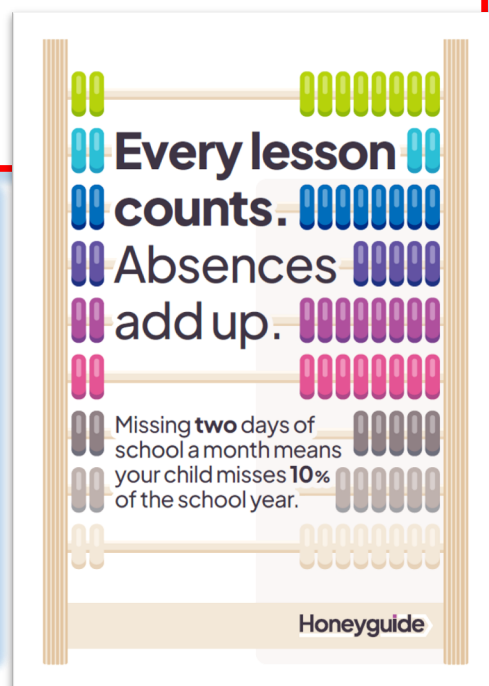
Oak class—94.8%

Willow— 97.2%

Sycamore—98.9%

Chestnut class were the winners with 99% attendance this week—earning themselves an extra play-time!

Well done!



Peace Perseverance Truthfulness Courage Compassion Respect



01564 792574



www.woottonwawenprimaryschool.co.uk



SCAN ME





NEWSLETTER

Meet the teacher

Thank you to those of you that were able to come in and find out about the learning in your child's class and meet the teachers to find out a little bit about them too.

Our website will be up-dated shortly to reflect the curriculum plans for the year. Please keep up-to-date with your child's topic here:

<https://woottonwavenprimaryschool.co.uk/curriculum/our-curriculum-statement>

Online Digital Safeguarding advice—

Please see the poster on the next page regarding the 'Final Fantasy 14' game which has a rating of age '16' owing to the level of violence and potential risk of addiction. Please be mindful of children's online and screen time.



01564 792574



www.woottonwavenprimaryschool.co.uk

Macmillan Coffee morning

Letters about our Coffee morning have been sent out via Studybugs this week and we look forward to welcoming you next **Friday 27th September**.

Families and parents can join at the following times:

- Oak Class—9:15am
- Willow Class—9:45am
- Chestnut—10:15am
- Sycamore—10:45am

Please can we have donations of cakes and treats—**no nuts!** Gluten free treats are required too as we have a few children who require this. Please bring in donations by Thursday 26th September.

Appropriate games to play at play-time

We are really lucky to have the space, equipment and trim trail at our lovely school for children to play on. However, recently we have noticed an increase in children making their own 'Ouija boards' where they are giving out dares to each other. Not only can this frighten the younger children, but it is **not appropriate** for school play-times. We will be talking to the older children about this next week. Please ensure your child is aware that this is not appropriate at our school and they will be asked to find alternative play-time games. Thank you.



SCAN ME



What Parents & Educators Need to Know about FINAL FANTASY XIV

AGE RESTRICTION
PEGI
16

WHAT ARE THE RISKS?

The video game Final Fantasy XIV launched in 2010, and, despite being critically panned, it saw an overhaul that has made it one of the biggest success stories in gaming. Its huge world, epic story and versatile combat system have continued to draw in new players, but there's a lot that trusted adults need to be aware of – not least the cost of paying monthly to play.

ALWAYS ONLINE

Final Fantasy XIV is an MMORPG, which stands for Massively Multiplayer Online Role-Playing Game. Much like World of Warcraft, players create a character in a chosen class and level up by completing quests to gain power and items. The game requires a constant internet connection, whether you're playing on PC, Mac, PlayStation or Xbox, and there's no option to play offline.

REGULAR EXPANSIONS

As with similar titles in the genre, players can purchase expansions to unlock additional content for the game. Those without the expansions will be locked out of certain new quests and activities, meaning that young people who play regularly will potentially have the next release earmarked on their calendar, ready to buy it as soon as possible.

IN-GAME PURCHASES & SUBSCRIPTION FEE

Users need to pay £8.99 per month to play Final Fantasy XIV, but there is a free trial. If someone stops paying, they'll lose access to their character (although they'll be able to pick up the payments again and resume where they left off). If a player forgets to cancel their payments, however, those subscription fees will continue rolling on automatically.

VOICE & TEXT CHAT

Final Fantasy XIV lets players send chat messages in-game or speak to each other over voice chat. On the one hand, that provides plenty of choice for how those enjoying the game can interact with their fellow fans. On the other hand, however, it's easier than in many games to receive unprompted messages from a stranger, with whom you constantly share your play space.

VIOLENCE

While Final Fantasy XIV has a fairly light tone throughout some of its quests, many involve killing enemies and sometimes even wild animals. The violence isn't especially strong – more comparable to a cartoon or anime style – but the act alone may make some children feel uncomfortable, if they're not yet able to separate fictional harm from the real kind.

POTENTIAL FOR ADDICTION

As with World of Warcraft, there's an element of addiction to Final Fantasy XIV. The gameplay loop can be quite engrossing, as minutes turn into hours and hours into days while playing alone or with friends. This can potentially lead to missing real-life events, a lack of interest in any activities not related to the game and procrastination around responsibilities like schoolwork.

Advice for Parents & Educators

MANAGE PLAYTIME

Playtime limits are a great way to counter the addictive qualities of games like Final Fantasy XIV. They allow you discuss why it's still important to enjoy things outside of gaming while still letting a child enjoy playing online with their friends when it makes sense to do so. It's all well and good to have fun with a game, so long as they're able to step away and reconnect with the real world.

MAKE USE OF THE FREE TRIAL

The Final Fantasy XIV free trial is a generous one, with no limits on how long someone can play until their character hits level 70. That's easily dozens of hours for a child to go through the game, complete quests, and see if they enjoy it before purchasing expansions or subscribing to a membership. They may well move on to something else before you need to spend so much as a penny.

PLAY TOGETHER

The free trial makes it extremely easy to jump into Final Fantasy XIV and play alongside a child, provided they're old enough. Not only does that help you ensure that settings are adjusted for their privacy and safety, but it may also end up becoming a bonding experience for you both and any other family members that want to try it out.

REMEMBER, IT'S A PEGI 16

Despite its often-relaxing nature, Final Fantasy XIV carries a PEGI 16 rating for violence and drugs (although the latter is due to a character smoking a pipe on occasion). There's minimal blood, but characters can attack enemies (and other players) with weapons and spells. Take a look at some gameplay videos to see if the content is appropriate for a younger player.

Meet Our Expert

Lloyd Coombes is the Editor-in-Chief of GGRecon, and has been working in the gaming and tech industry for five years. A longtime fan of online games, he's also a parent, and therefore understands the importance of online safety. Writing mainly about tech and fitness, his work has previously been published at sites including IGN, TechRadar and plenty more.



The National College



Wootton Waven
C of E Primary School



Inspiring Educational Excellence for Everyone
ARDENforest
C of E Multi Academy Trust

NEWSLETTER

Dates for your diary

Friday 27/09/24	Macmillan Coffee Morning – all parents and family members invited
Friday 04/10/24	Harvest Festival at St Peter's Church at 9.30am – all parents and family members invited
Monday 14/10/24	Thrive Week including Protective Behaviours Project (Taking Care) – more information to follow
Tuesday 22/10/24	Individual school photos
Tuesday 22/10/24	Last Forest School session
Wednesday 23/10/24	Parents' Evening- more information to follow
Thursday 24/10/24	Celebration Assembly at 2.40pm – all parents invited Break up for half term
Friday 25/10/24	Teacher Training Day
Half term (Monday 28/10/24 -Friday 01/11/24)	
Monday 04/11/24	Children return to school
Monday 11/11/24	Anti-bullying Week – Reach Out
Tuesday 12/11/24	Sycamore Forest School
Wednesday 20/11/24	Oak class and Year 6 Height and Weight checks
Friday 22/11/24	iSing Pop Workshop – 'Joy Seekers' – more information to follow
Friday 29/11/24	Chestnut Class Assembly – <i>please note the change of date</i>
Monday 09/12/24	Key Stage 1 Christmas production dress rehearsal
Tuesday 10/12/24	Key Stage 1 Christmas Performance at 2.30pm – Oak and Willow class parents and families invited – more information to follow
Wednesday 11/12/24	Key Stage 1 Christmas Performance at 2.30pm – Oak and Willow class parents and families invited – more information to follow
Wednesday 18/12/24	Celebration Assembly at 2.40pm – all parents invited
Thursday 20/12/24	Christmas Service at St Peter's Church at 9.30am – all parents invited
Friday 21/ 12/24	School finishes for the Christmas holidays.



01564 792574



www.woottonwavenprimaryschool.co.uk



SCAN ME

