



Friday 8th December 2023

NEWSLETTER



It's beginning to look a lot like... Christmas!

It really is the most wonderful time of the year. Each classroom is brimming with a buzz and excitement for learning and all things festive! A lovely Crafty Christmas took place and Christmas production rehearsals are being finalised. The whole-school enjoyed the 'Decoration Operation' which took place in the hall on Thursday. So many beautiful decorations were made, well done everyone for their fabulous efforts and thank you for your support.

Chestnut Class Assembly

We were all blown away by the amazing children who took part in Chestnut's class assembly! The assembly was all about their current topic of Ancient Egypt. They started off with some fascinating facts about the country itself, then travelled back in time to explain about the hierarchy of Ancient Egyptian society - from slaves right up to the mighty Pharaoh! They then introduced everyone to some of the all-important gods and goddesses which played such a vital part in the lives of the Ancient Egyptians. Of course, no class assembly would be complete without a song or two, including the classic, 'Walk Like An Ancient Egyptian', which had the rest of the school on their feet! Their costumes, line delivery, singing and dancing were all amazing! They are continuing their topic until the end of term and these wonderful scarab beetles and shabtis have been made.



Peace Perseverance Truthfulness Courage Compassion Respect



01564 792574



www.woottonwawenprimaryschool.co.uk



SCAN ME





Wootton Wawen
C of E Primary School



Inspiring Educational Excellence for Everyone
ARDEN forest
C of E Multi Academy Trust

NEWSLETTER

A wonderful sight!

We are so thankful and grateful for the hard work, effort and time that has been put into the Beech Hut activities over the last term. A huge thank you to Mrs Hartwright and Ms Barnett for their amazing work. Crafty Christmas was a real hit last week with candy canes, key rings and colouring galore! Lots of children talked excitedly about what they had created.

Don't miss the next Beech Hut event—Wednesday 20th December—Christmas Movie night! Ring the Office for more information and availability. We'd love to see you there!



School value of the term: Peace

This week we lit our first candle on our advent wreath. The first candle of the wreath symbolizes hope. The candle of hope for Advent assures us we can have hope that God will fulfill the prophecies declared in the Old Testament about Jesus. Hope doesn't disappoint us (Romans 5:5).

The Advent Wreath is a circle having no beginning and no end. This symbolizes the fact that God also has no beginning and no end. It can also remind us of the unending love of God for us.



01564 792574



www.woottonwawenprimaryschool.co.uk



SCAN ME





NEWSLETTER

Attendance Corner

Pupils who attend school regularly improve their chances of being academically successful. Poor attendance can have an adverse impact on friendship groups, self-confidence, resilience, and social, emotional and mental health. It can have a damaging effect on a child's education and work missed during an absence may never effectively be made up. There is a proven link between poor school attendance and low levels of achievement.

This week I have been talking to the parents of children whose attendance has fallen below 90%. A pupil with attendance below 90% is classed as **persistently absent**, even if the absence has been authorised.

If a pupil is a persistent absentee:

- They have been absent from school for 10% or more of school time.
- In one school year they will have missed 19 whole days or more of school.
- In five school years they will have missed 95 days or more of school, which is at least half of a school year in total.

If you are experiencing difficulty with your child's attendance, please book an appointment to speak to Miss Jones or Mrs Ellard.

In and on time at 5 to 9 !



Stars of the week!

Date: 1st December 2023

For: Writing

Well done to: Alana, Oliver, Nicola, Daniel, Ted, Tracey, Darcey and Oliver.

Stars of the week!

Date: 8th December 2023

For: Teacher's choice

Well done to: Jacob, Will, Ava, Charlie, Harley, Arnon, Alys, Thomas and Giovanna.



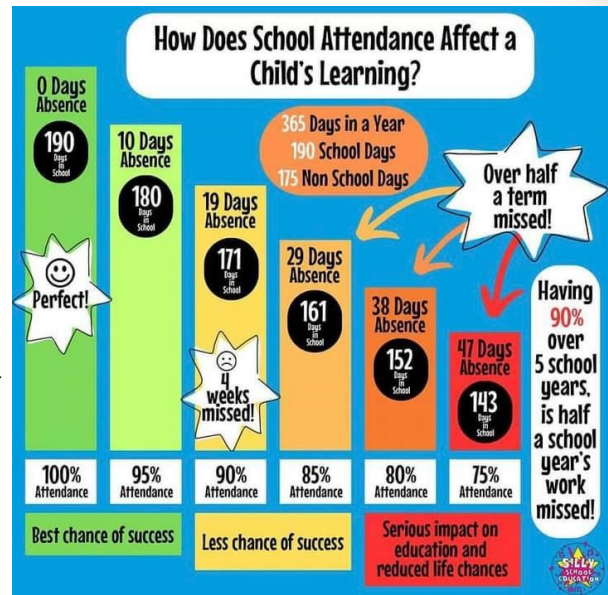
SCAN ME



01564 792574



www.woottonwavenprimaryschool.co.uk





NEWSLETTER

What's coming up?

Christmas Productions

Oak and Willow will be performing their Christmas production on the following days:

- Tuesday 12th at 2:30pm
- Wednesday 13th at 2:30pm

Parents have now had their tickets– please bring these with you on the day you are attending.

We have also invited Pre-School children and residents of Cedar Lodge to come along to watch our Dress Rehearsal on Monday. We can't wait to share the children's hard work with others in our community.



Christmas Carol Service

Our Christmas Carol Service will take place at St. Peter's Church on Thursday 21st December at 9:30am. We hope that many of you will join us for this special event. If any parents are available to walk with the children down to Church, please let your child's class teacher know.

Don't forget to buy your raffle tickets for the FOWS Christmas Raffle! There are some amazing prizes including a 2-night stay in a Pod, lots of pub meal vouchers, gin tasting and many more! We all deserve a chance for something special this Christmas!

Tickets can be purchased on Parentpay for £1 each or return your form to reception with your money.

FOWS will be selling them in the playground next Friday.

Celebration Assembly

On Wednesday 20th December, parents and family are invited to our final Celebration Assembly of the term. Here, we will celebrate all of our Star of the Weeks from Autumn Term 2 and share achievements from the term.

All are welcome from 2:30pm on this day. Please sign in at the Office.



Christmas Jumper day

On Wednesday 20th December, children are invited to wear a Christmas Jumper / t-shirt over their school uniform for a small donation. More information will be sent out soon. This is the same day as our Christmas Lunch– please be mindful of this when sending the children in with their jumpers! We all know how delicious those Christmas dinners are...



01564 792574



www.woottonwawenprimaryschool.co.uk



SCAN ME





NEWSLETTER

Dates for your diary

12.12.23	2:30pm—Key Stage 1 Christmas Production
13.12.23	2:30pm—Key Stage 1 Christmas Production
20.12.23	Christmas Jumper day Christmas Lunch day—yum! 2:30pm—Celebration Worship—Parents invited
21.12.23	9:30am—Christmas Service at St. Peter's Church—All welcome
22.12.23	Last day of term Break the Rules Day (FOWS) - more information coming soon!

Christmas holidays— ho, ho, ho!

08.01.24	INSET Day—Teachers only
09.01.24	Children back to school (Spring Term)
12th—16th Feb	Half-term holiday
19.02.24	Children back to school
22.03.24	End of Spring Term
25th March—5th April 2024	Easter holidays
08.04.24	Children back to school (Summer Term)



01564 792574



www.woottonwavenprimaryschool.co.uk



SCAN ME

