

# Yarm Primary

## RECEPTION

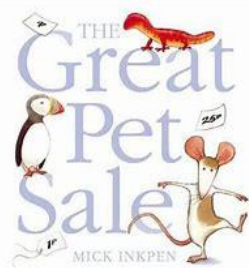
### SPRING NEWSLETTER



#### Welcome Back

Welcome back to the beginning of the Spring term. We hope you had an enjoyable Christmas break and a lovely New Year. We would like to thank you for your kind gifts and cards last term.

This half term we will be learning all about animals and pets. We will be finding out about different animals and talking about what would make a suitable pet. We will also be looking at lifecycles, habitats and talking about animals and their young.



After half term, we will move on to our new topic 'Around the World'. As part of this work, we will be comparing the local and wider environment. We looking forward to using our 'Magic Carpet' to explore different countries of the world.



The children will be taking part in weekly PE sessions, which will normally take place on a Wednesday and Friday. Please provide your child with a PE bag containing a t-shirt, pair of shorts/joggers and a pair of plimsolls/trainers. Please write your child's name in each item of clothing. We do have spare clothing for children to use if they do not bring their kit.

If you have queries, questions or concerns please do not hesitate to contact us.

Mrs Barber and Miss Puttick

#### SAVE THE DATE

Parents Evening – Monday 10<sup>th</sup> and Tuesday 11<sup>th</sup> February - further details to follow

The Adventures of Pinocchio Theatre Visit – Tuesday 11<sup>th</sup> February - further details to follow

#### Notices

A number of children have been bringing toys and items home into school recently. This is something that we do not encourage unless it is part of a show and tell session. This is to ensure that valuables from home are not broken and to minimise distress for the children. We do have a range of equipment which they are able to access during playtime and lunchtimes if they wish. We appreciate your support in this matter.

During the morning the children take part in 'Prime Time' where we have a piece of fruit and a drink of water to help address the children's physiological needs. Please provide your child with a refillable (named) water bottle which **contains still water only**. Fruit is provided daily, however if you wish you may send a piece fruit in with your child.

We would be very grateful of any containers, boxes or kitchen roll tubes which you would be able to donate for us to use in our modelling area. **Please note that the containers need to be clean and we are unable to use toilet rolls, boxes which contained medication or any containers which have had nut products in them.**

Our school twitter account is <https://twitter.com/YarmPS>

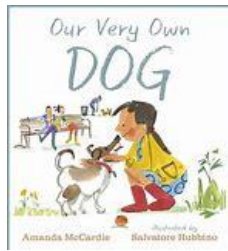
Half Term Monday 17<sup>th</sup> February – Friday 21<sup>st</sup> February

Children return to school on Monday 24<sup>th</sup> February

## WHAT ARE WE LEARNING ABOUT?

### COMMUNICATON, LANGUAGE AND LITERACY

We will continue to focus on the children's phonic and keyword knowledge to support their reading and writing. We will be sounding out words to spell using the sounds the children know as well as focussing on spelling some of our tricky words correctly. We will be encouraging the children to write a range of genres including lists, letters and instructions. We will be focussing on using capital letters, finger spaces and full stops when writing sentences. We will be continuing to focus on speaking and listening skills, in particular the children's understanding of the books that we read. We will be encouraging the children to use their imagination and introduce a storyline into their play within our new role-play areas.



### MATHMATICS

In our Number work we will be focussing on number recognition, counting in steps of ones, twos and tens, finding 1 more and less as well as looking at basic addition and subtraction.



In our shape and measures work we will be naming and describing 3D shapes as well as comparing objects by length, height and weight. We will also be introducing data handling and looking how to represent information in different ways.

### UNDERSTANDING THE WORLD

As part of our work on animals we will be looking at baby and adult animals and comparing their similarities and differences. We will be finding out about lifecycle and habitats of different animals. As part of 'Around the World' topic, we will be identifying and comparing the features of the local and wider environment. We will be identifying different countries on a map. We will be finding out about celebrations and festivals from around the world. We will be using the programmable toys to focus on direction and position work.

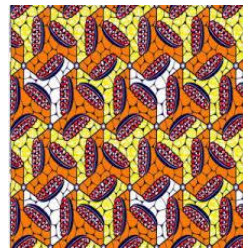
### PHYSICAL DEVELOPMENT

In P.E. this term, we will be focussing on Gymnastics and Games. We will be working on balancing and travelling along and through equipment with increasing control. We will be working on the skills of throwing, catching and accurately passing a ball using both our hands and feet.

We will be thinking about the different ways to keep healthy and will continue to encourage healthy choices through prime time and lunchtime.

### EXPRESSIVE ARTS

We will be looking an animal patterns as well as artwork from different countries to inspire our own creations. We will be listening to music from around the world. We will be learning new songs and using instruments to recreate the different sounds. We will be using the role-play areas to develop our story telling skills and vocabulary.



### PERSONAL, SOCIAL AND EMOTIONAL DEVELOPMENT

As part of our 'Going for Goals' topic we will be encouraging the children to think about what they are good at, what it means to set a goal and how we can achieve this. After half term, we will be thinking about our feelings and how we express these. The children will continue to participate in weekly circle time sessions.



## Reception Staff

### Class Teachers

Mrs Barber and Miss Puttick

### Release Time Cover

Mrs Whitaker, Mrs Parkes, DFC Coaching