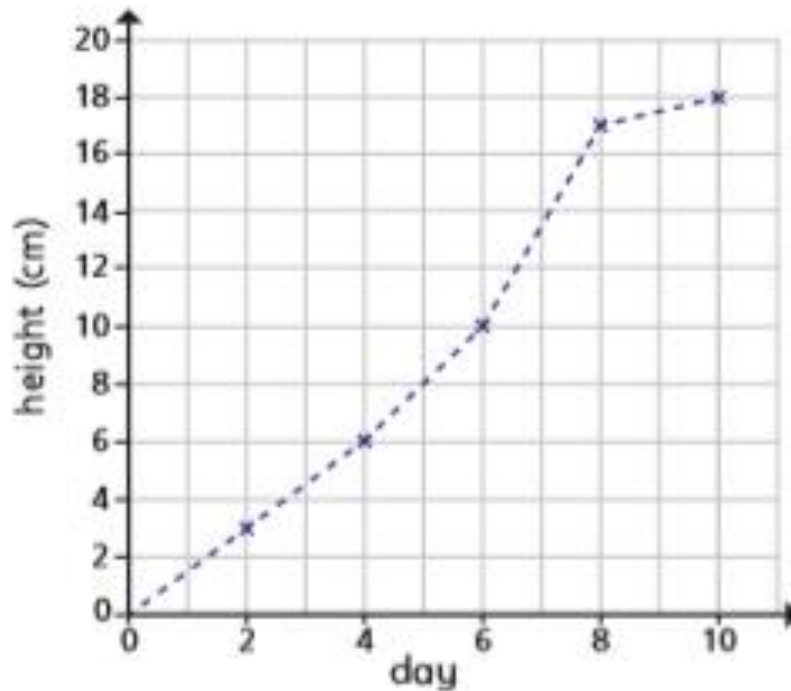


Reading Line Graphs – Bronze

- I** The line graph shows the growth of some cress over 10 days.



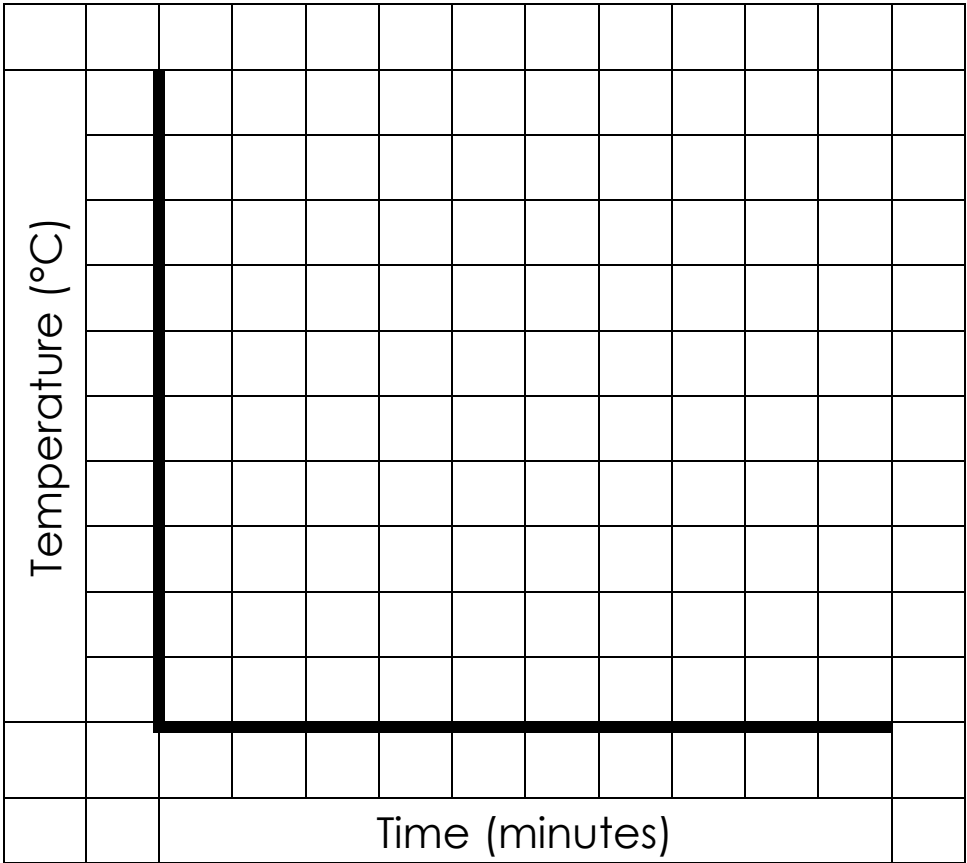
- a) How tall was the cress on Day 2? cm
- b) On what day did the cress reach 10 cm? day
- c) Estimate the height of the cress on Day 5 cm
- d) Estimate when the cress will reach a height of 14 cm.
day
- e) Between which two consecutive days did the cress grow the most?
day and day

Plotting Line Graphs - Silver

The table below shows how quickly a beaker of water was heated up using a Bunsen Burner.

Time (minutes)	Temperature (°C)
0	10
1	20
2	30
3	50
4	60
5	60
6	70
7	80
8	80
9	90
10	100

Plot the information on this line graph.

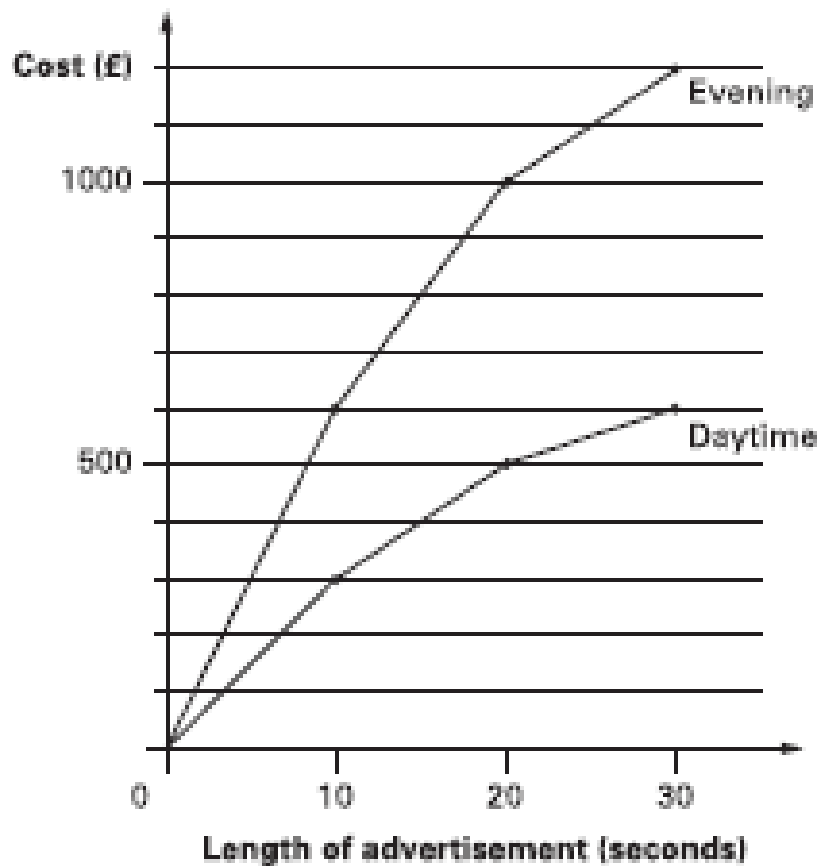


Answer the questions on the back of this sheet.

1. What was the starting temperature?
2. What might the temperature have been at 5 minutes?
3. What was the finishing temperature?
4. What might the temperature have been after 5 and a half minutes?

Gold

This chart gives the cost of showing advertisements on television at different times.



An advertisement lasts 25 seconds. Use the graph to estimate how much cheaper it is to show it in the daytime compared with the evening.



£

An advertisement was shown in the daytime and again in the evening.

The total cost was £1200

How long was the advertisement in seconds?



seconds

Bronze Answers

3cm
Day 6
8cm
Day 7
Day 6-8

Silver

Use table and drawn graph to answer the questions. You can check with us on Class Dojo.

Gold Answers

£550
15 seconds