



1st April

$42 \div 7$

Grid for calculation:  $42 \div 7$

$120 - 45$

Grid for calculation:  $120 - 45$

Write **am** or **pm** in each box

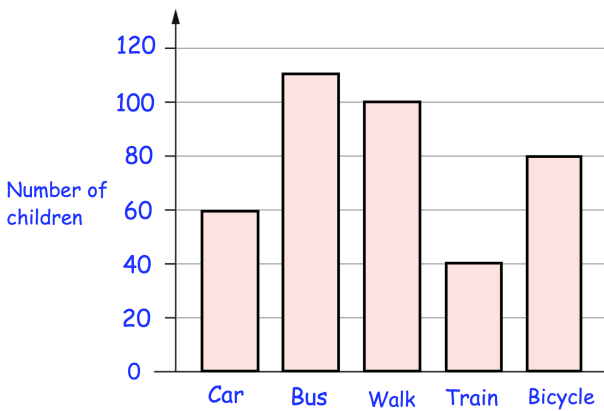
Fabian has his lunch at **half past twelve**

12:30

Fabian wakes up each morning at **quarter past six**

6:15

The bar chart shows how children at a primary school travelled to school each morning



How many children travelled to school by **bicycle**?

How many **more** children travelled to school by **walking** than by **train**?

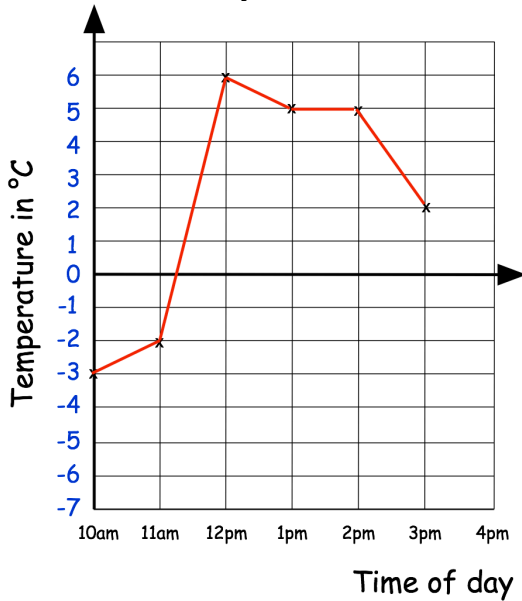


1st April

$43 \times 100$

$5.4 + 3.2$

The graph shows the temperature in a town on a cold day



Between what two times did the temperature stay the same?

At 4pm the temperature was 3°C colder than at 3pm.

What was the temperature at 4pm?

Each card on the left matches one on the right.

Draw lines to match the cards which are **equal** in value

$16 \times 20$

$150 \times 2$

$90 \times 3$

$40 \times 8$

$75 \times 4$

$14 \times 20$

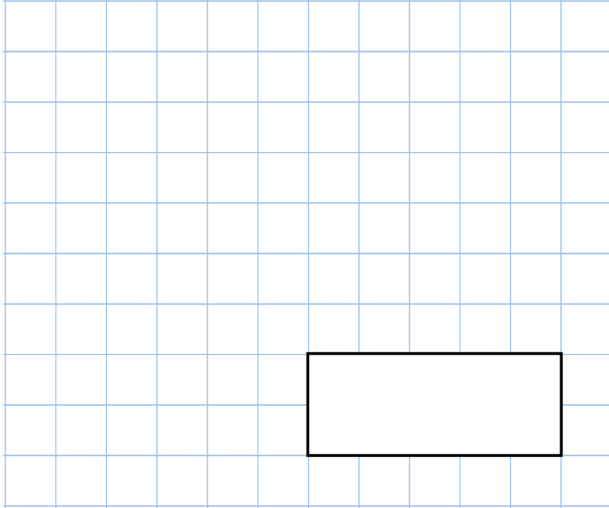
$28 \times 10$

$270 \times 1$

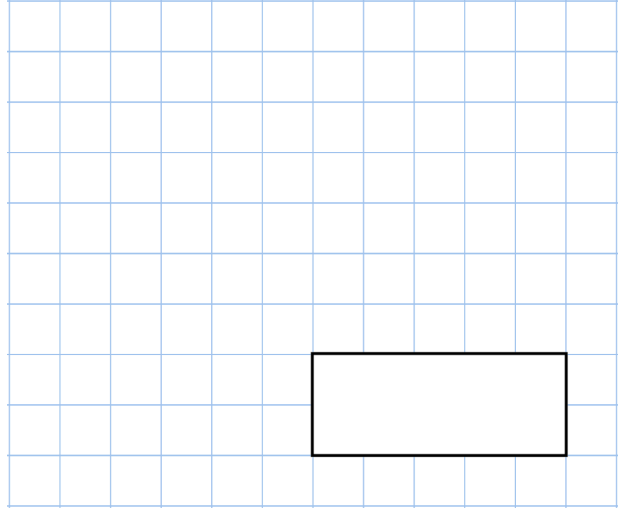


1st April

$$\square^2 = 49$$



$$1,944 \div 9$$



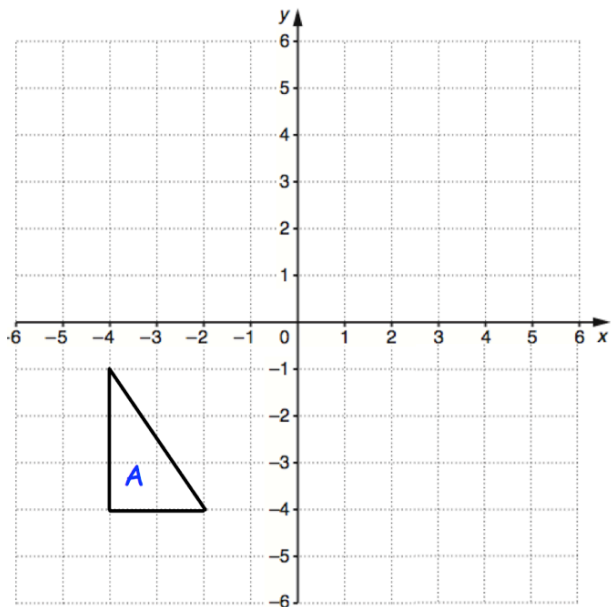
The lengths of time that it takes to complete a jigsaw are below.

0.5 hours   1.25 hours   100 minutes

0.75 hours   40 minutes

Arrange the times in order, starting with the shortest.

Reflect triangle A in the x-axis



Plot the point (5, -1)

Name: \_\_\_\_\_



2nd April

$$29 + 88$$


$$1,025 - 100$$


A group of friends earn £40 by cutting grass.  
 They share the money **equally**  
 They get £5 each.  
 How many friends are in the group?



Draw a 4cm line

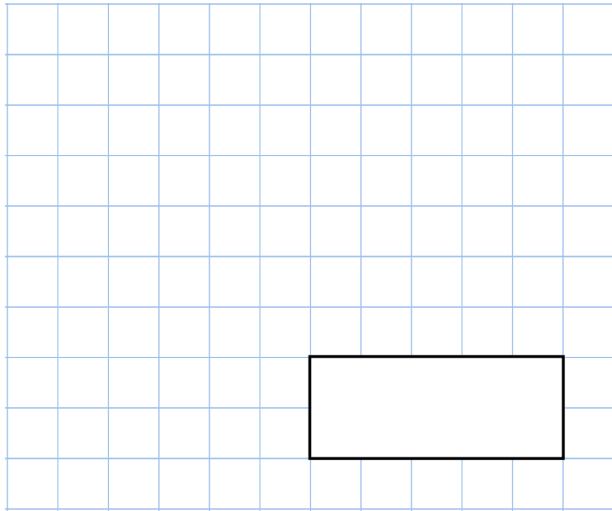
Andrea has these digit cards  
**1** **4** **6** **7**  
 She makes a 2-digit number and a 1-digit number.  
 She adds them together.  
 Her answer is a **multiple of 10**

What could Andrea's addition be?  
 +

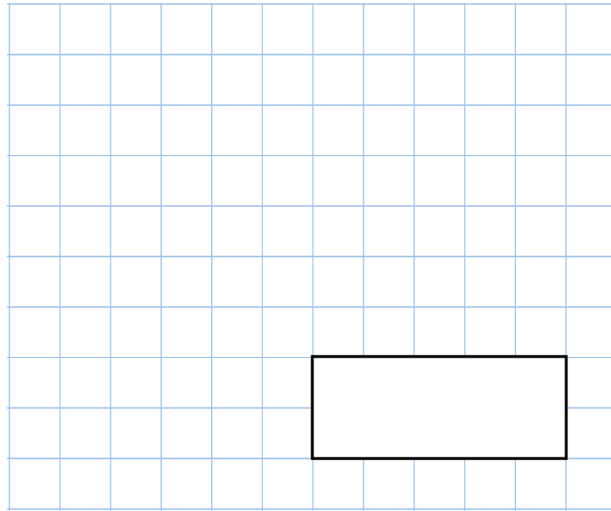


2nd April

$738 + 300$



$681 \div 3$



Fill in the missing numbers

48 months =  years

77 days =  weeks

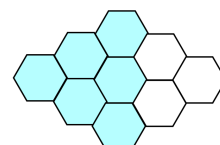
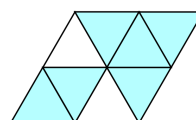
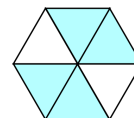
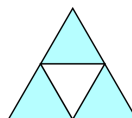
72 hours =  days

At the start of December, there were 3,590 video games in a shop.

During December,  
8,421 more video games were delivered  
10,709 video games were sold.

How many video games were left in the shop at the end of December?

Tick two shapes that are  $\frac{2}{3}$  shaded





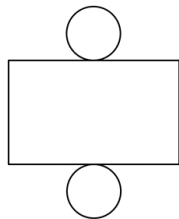
2nd April

Simplify  $\frac{12}{16}$

$720 \times 9$

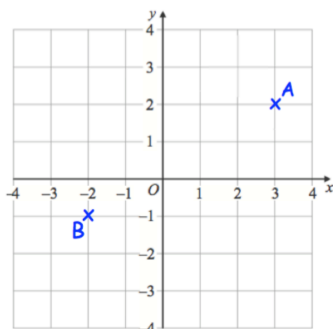
James earns £12 per hour.  
He works 19 hours in one week.  
He gives 10% of his earning to his sister.

How much does he give to his sister?



This is the net for a 3D shape.

Sketch the 3D shape.



Write down the coordinates of A.

Write down the coordinates of B



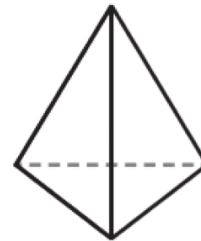


**3rd April**

4 | 8 6 8

$708 - 59$

Here is a triangular-based pyramid  
How many faces does it have?



Miles and Megan both buy 6 cans of fizzy drinks.

**Miles**

6 cans at 79p each



**Megan**

Pack of 6 cans for £4.49



How much more money does Miles pay than Megan?

Olivia has a bag of grapes.  
She gives half of them to Harry.  
Harry eats four and then has five left.  
How many grapes did Olivia have at the start?





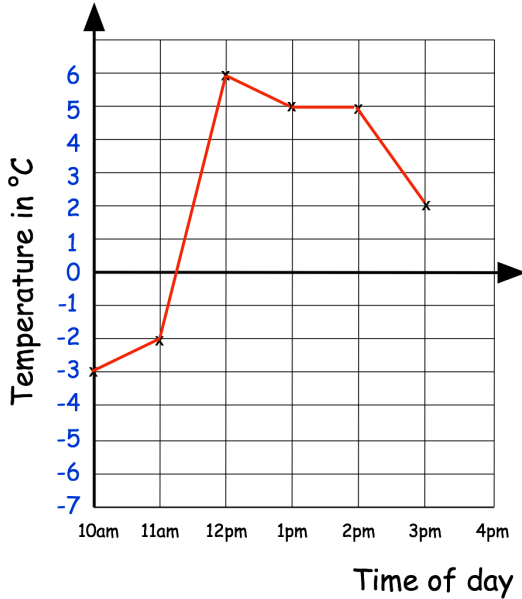


1st April

$43 \times 100$

$5.4 + 3.2$

The graph shows the temperature in a town on a cold day



Between what two times did the temperature stay the same?

At 4pm the temperature was 3°C colder than at 3pm.

What was the temperature at 4pm?

Each card on the left matches one on the right.

Draw lines to match the cards which are **equal** in value

$16 \times 20$

$150 \times 2$

$90 \times 3$

$40 \times 8$

$75 \times 4$

$14 \times 20$

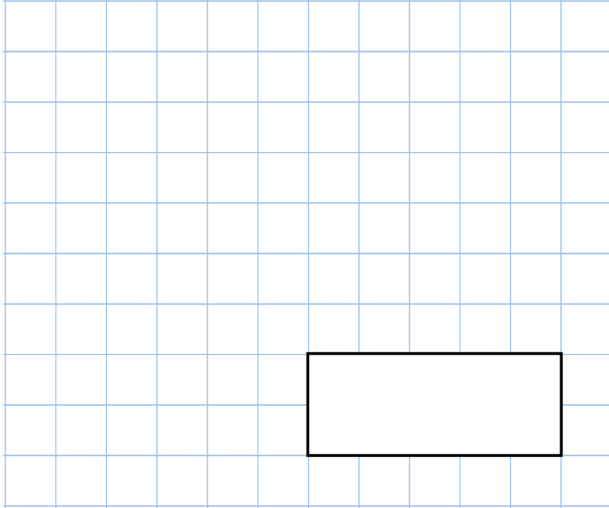
$28 \times 10$

$270 \times 1$

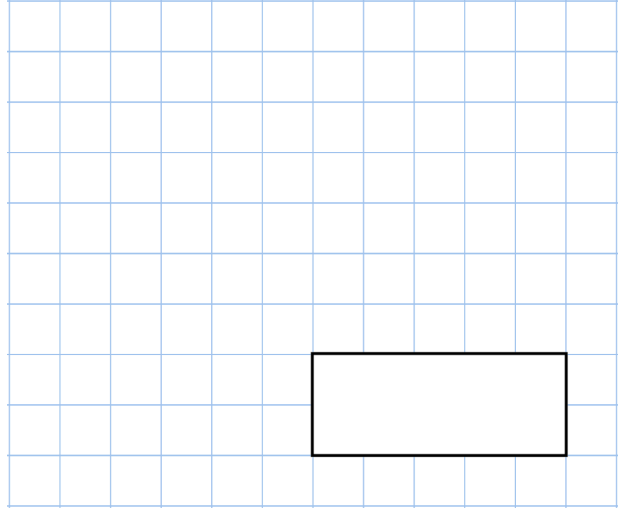


1st April

$$\square^2 = 49$$



$$1,944 \div 9$$



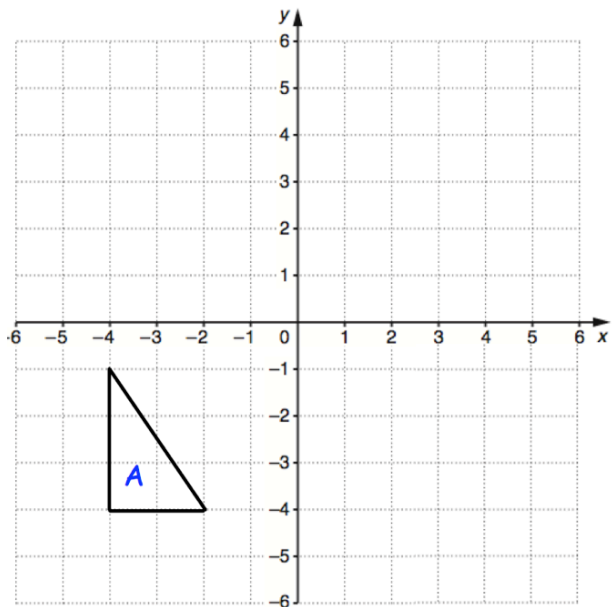
The lengths of time that it takes to complete a jigsaw are below.

0.5 hours   1.25 hours   100 minutes

0.75 hours   40 minutes

Arrange the times in order, starting with the shortest.

Reflect triangle A in the x-axis



Plot the point (5, -1)







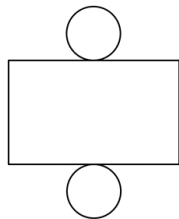
2nd April

Simplify  $\frac{12}{16}$

$720 \times 9$

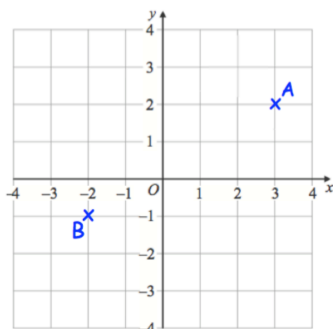
James earns £12 per hour.  
He works 19 hours in one week.  
He gives 10% of his earning to his sister.

How much does he give to his sister?



This is the net for a 3D shape.

Sketch the 3D shape.



Write down the coordinates of A.

Write down the coordinates of B