



Welcome to  
Yarm Primary School  
Early Years  
Nursery setting

the  
enquire  
learning trust



We would like to warmly welcome you to the Early Years Foundation Stage at Yarm Primary School.

We hope to work in partnership with you and your child to support them in being happy lifelong learners.

## **Yarm Primary**

Principal – Mrs Jill Wood

Vice Principals — Mrs Vicki Hughes & Mrs Jayne Barber

School Business Manager – Mrs Jenny Gartland

School Administrators – Mrs Rebecca Tyerman & Miss Leah Dixon

SENDCo (Special needs & disabilities co-ordinator) — Mrs Jayne Barber

Site Supervisor – Mr Brian Graham

## **The Early Years Team**

Early Years Lead practitioner – Miss Puttick

### **Early Years 1 (Nursery)**

Mrs Parkes/Mrs Willis – Class Teachers

Mrs Laughton – Teaching Assistant

Mrs Gibson – Teaching Assistant

### **Early Years 2 (Reception)**

Mrs Barber- Class Teacher

Miss Puttick – Class Teacher

Mr Kundu – Teaching assistant

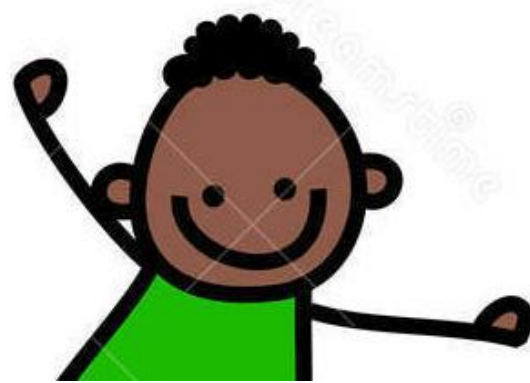
We are part of Enquire Learning Trust, which means we enquire into teaching and learning away from our School, through observation and research in order to improve what we do in our own setting. It is this curiosity amongst the adults in school that we aim to foster in our young people...

## **Enquire Learning Trust**

Unit 5 Navigation Court,

Wakefield.

WF2 7BJ



## **Admission arrangements**

### **Nursery**

Children are able to join our Nursery following their 3rd birthday for either 15 or 30 hours per week. Applications should be made directly to school. You will receive a letter from school confirming your child's start date and will be invited into school to meet your child's class teacher to find out more about how we work and to share key information.

### **Reception**

Children enter the Reception class in the September following their 4th birthday. Applications should be made to the local authority – Stockton Borough Council - during the autumn term before they are due to start. An application letter will be sent to you directly from the local authority. Once your child's place has been confirmed you will receive a letter inviting you into school to meet your child's class teacher and find out more about how we work in Reception.

\*Typically, towards the end of the Summer term your child will be invited to attend a number of sessions in Reception in preparation for starting school in September. You and your child will also have some opportunities to come into school together for a range of experiences.

\*These typical arrangements have been impacted on during the pandemic, which we are sure you will appreciate. Our offer is therefore flexible currently, reflecting government and regional advice.



# **The School day**

## **School Times**

### **Nursery**

Children attend Nursery for either five mornings or five afternoons per week.

Nursery hours are as follows:

Morning Session: 8:45 – 11:45

Afternoon Session: 12:30 – 3:30

30 Hours: 8:45 - 3:30 (school meal's can be purchased or packed lunch provided)

Children enter and exit school via the main entrance, where currently staff meet the children and escort them in to school. For an opportunity for parents to engage with staff, parents/carers collect the children directly from the Nursery door where staff are available if needed.

### **Reception**

Currently the school gates are open from 8.50am, when children and parents can enter the site and make their way to the Reception entrance. The register is taken from 8.55am and the gates locked at 9.00am

There is a fifteen-minute playtime during the morning session Lunchtime is 11.45am – 12.45pm

The afternoon session includes a short playtime and ends at 3.30pm.

Children enter and exit school via the Reception entrance. At home time the children are delivered to the adult who is waiting for them. Please notify us if the usual arrangement changes so that we can ensure children are safe.

### **Absence**

It is very important that parents inform us as to why their child is away from school either by telephoning us or e-mailing [yarm@yarmprimary.org.uk](mailto:yarm@yarmprimary.org.uk)

To comply with Government legislation we have to record an absence for which we have received no notification as an 'Unauthorised Absence' and these are recorded on a child's annual report.

It has been well researched and evidenced that high levels of absence impact significantly on children's learning. We will endeavour to support any family who are having difficulties in meeting the expected high expectations around absence. Any difficulties should be discussed with the Principal at the earliest opportunity.



## **Food and drink**

All children are provided with a free piece of fruit or vegetable each day as part of the Government School scheme. The children in Nursery are also offered a drink of milk as well as having access to water. Children in Reception are encouraged to bring in their own water bottle, containing water only - in line with the rest of the school. As with all items bought from home we ask that you label clearly and take home regularly to be cleaned... All children from Reception up to and including Year 2, are entitled to a free lunch at school, as part of the Government universal free meals for infant's scheme. Since September 2021 the meals are planned and delivered through the Trust and are receiving great feedback from the children. Sample menus are available on the website and you can pre-order your child's choices. Please let us know if your child has any allergies, so that we can accommodate their needs.

## **Communication & Payments**

### **Communication**

Effective communication is vital to a strong home/school partnership. We have introduced a Trust wide system - MCAS – through which we have circulate important information. Each child also has a 'dojo' account through which homework etc. can be shared and great news given! Details about how these accounts work will be shared on induction and rely on accurate contact details; so please ensure you let us know if you change yours! We will always get messages shared with the main school office via – 01642782731 OR [yarm@yarmprimary.org.uk](mailto:yarm@yarmprimary.org.uk) and are very happy to meet with you directly via prior arrangement.

### **Payments**

We are a cashless school. Payments for all items including trips, lunches, YPC (Yarm Primary Club – Breakfast/after school) and other activities are processed via the online system MCAS. When your child is ready to start school we will send you an email link to register your account.



## Uniform

One of the impacts of the pandemic has been the adaptations we had to make around our uniform. We are continuing with these adjustments in the short term as they have proved to be positive in supporting high levels of activity and safety during playtimes and PE lessons.

We have a basic uniform, which we encourage all pupils to wear.

Many parents find that the uniform is a practical option and even Nursery children are more typically wearing uniform – particularly the royal blue school jumper.

Please label clearly all clothing, footwear, coats, school bags and lunchboxes.

The basic items listed below can usually be obtained from a variety of shops and supermarkets at very competitive prices and DO NOT have to have a school logo. However, if you wish to purchase clothing with the school logo these are available directly from 'Motif8'. [www.motif8.co.uk](http://www.motif8.co.uk) Tel: 01642 601 501. Other outlets may be available.

We do not intend to reintroduce a school PE kit in the short term and therefore the children need to be able to take part in active play, PE lessons and the daily 'mile' every day, in the clothes they come to school in.

We encourage:

Black/grey/navy blue trousers/joggers/leggings

White/pale blue/navy blue polo shirt

Royal blue sweat shirt/ cardigan

Footwear is the crucial element and should be safe for an active school day – appropriate trainers are advised.

## **Jewellery**

Jewellery is not encouraged in school as it can easily be lost or damaged, and occasionally lead to accidents. Our expectation is that jewellery should not be worn during PE. If children are going to have their ears pierced then it is advisable that this is done at the start of the summer holidays. Smart watches are not advised at school, as they present challenges within our safeguarding policy, which young children may find difficult to understand and comply with.



## **What do the children learn?**

The curriculum is guided by the national EYFS framework which sets the standards to make sure that children aged from birth to 5 learn and develop well and are kept healthy and safe.

The framework is for all Ofsted registered early years providers in all settings, including:

- \*Nurseries
- \*Childminders
- \*Pre-schools
- \*Reception classes

The framework was updated in 2021 and as an early adopter school we had time from 2020 to make the adjustments necessary for our children to access a great offer! It promotes teaching and learning to ensure children's 'school readiness' and gives children the broad range of knowledge and skills that provide the right foundation for good future progress through school and life.

The EYFS seeks to provide:

- Quality and consistency in all early years settings, so that every child makes good progress and no child gets left behind
- A secure foundation through planning for the learning and development of each individual child, and assessing and reviewing what they have learned regularly
- Partnership working between practitioners and with parents and/or carers
- Equality of opportunity and anti-discriminatory practice, ensuring that every child is included and supported

The EYFS specifies requirements for learning and development and for safeguarding children and promoting their welfare.

The learning and development requirements cover:

- \*The areas of learning and development which must shape activities and experiences (educational programmes) for children in all early years settings
- The early learning goals that providers must help children work towards (the knowledge, skills and understanding children should have at the end of the academic year in which they turn five)
- Assessment arrangements for measuring progress (and requirements for reporting to parents and/or carers).

The safeguarding and welfare requirements cover the steps that providers must take to keep children safe and promote their welfare.

## \*The areas of learning and development

There are seven areas of learning and development that must shape educational programmes in early year's settings. All areas of learning and development are important and inter-connected.

Three areas are particularly important for building a foundation for igniting children's curiosity and enthusiasm for learning, forming relationships and thriving.

These are the **prime areas**:

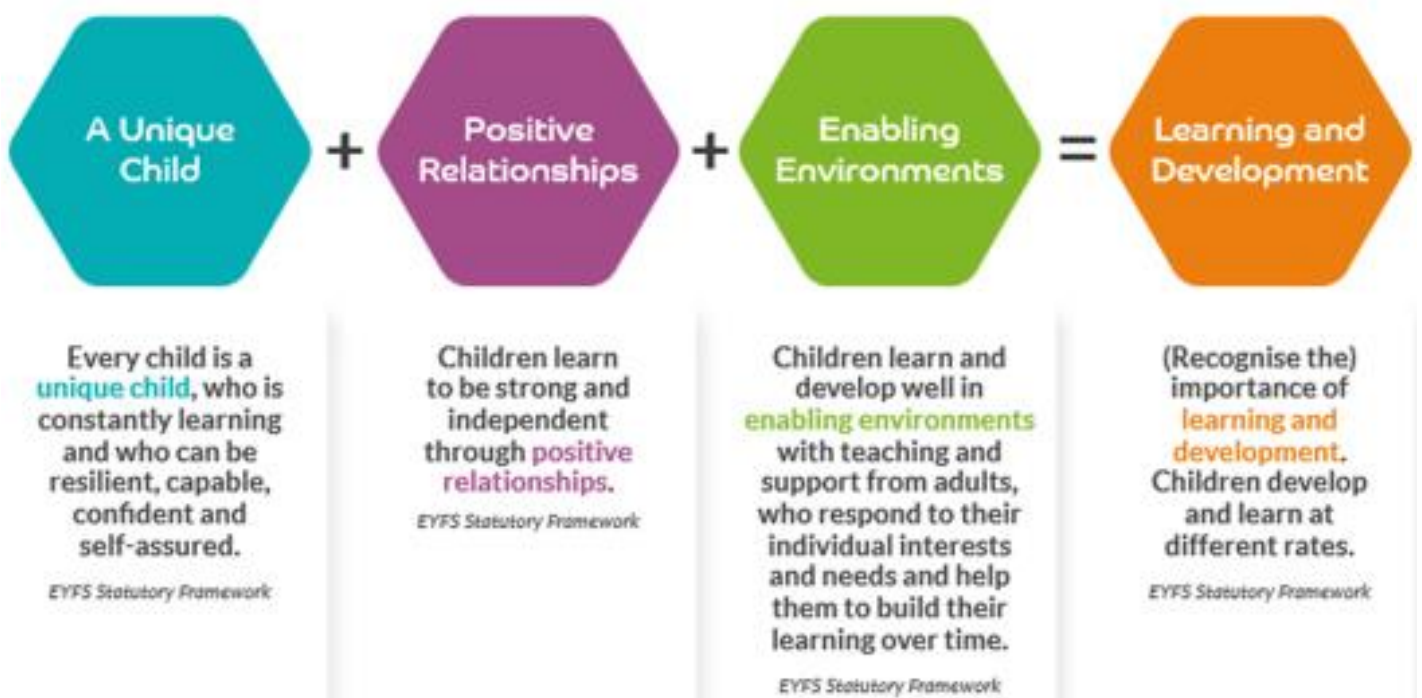
- Communication and language
- Physical development
- Personal, social and emotional development

Providers must also support children in four specific areas, through which the three prime areas are strengthened and applied.

The **specific areas** are:

- Literacy
- Mathematics
- Understanding the world
- Expressive arts and design

### Principles of Early Years education





A child's growth, development and learning are interrelated in complex ways from the moment of conception all the way through infancy to early childhood and beyond. Experiences during the early years strongly influence a child's future development, as development and learning build on what has already been acquired. There is an emphasis on the unique child, which we take very seriously, as it is by knowing your child, their strengths, challenges and character, which allows us to meet their needs and support their progress.

As you are the experts on your child the partnership between home and school is vital in securing success.

We will provide materials and opportunities to develop understanding around learning and the curriculum, however, if there is ever anything you need for us to explain or develop with you we are more than happy to do so. We are working on improving communication and authentic shared learning opportunities following the pandemic and welcome your feedback.

We look forward to many years of working together in supporting your child.

Education is not  
preparation for life;  
education is life itself.

John Dewey

Around here, we don't look  
backwards for very long... We  
keep moving forward, opening  
up new doors and doing new  
things because we're curious...  
and curiosity keeps leading us  
down new paths.

Walt Disney

Education is the most powerful  
weapon which you can use to  
change the world.

Nelson Mandela

