

Welcome to  
Yarm Primary School  
Early Years  
Reception setting

the  
enquire  
learning trust



We would like to warmly welcome you to  
Reception Phase at Yarm Primary School.

We hope to work in partnership with you and your child to  
support them in being happy lifelong learners.

## **Yarm Primary**

Principal – Mrs Jill Wood

Vice Principal —Mrs Jayne Barber

Academy Business Manager – Mrs Jenny Gartland

School Administrator – Mrs Rebecca Tyerman

SENDCo (Special needs & disabilities co-ordinator) — Mrs Jayne Barber

Site Supervisor – Mr Brian Graham

## **The Reception Team**

Early Years Lead practitioner – Mrs Barber

Miss Puttick - Class Teacher

Miss Rutter – Teaching assistant

We are part of Enquire Learning Trust, which means we enquire into teaching and learning away from our School, through observation and research in order to improve what we do in our own setting. It is this curiosity amongst the adults in school that we aim to foster in our young people...

## **Enquire Learning Trust**

Unit 5 Navigation Court,

Wakefield.

WF2 7BJ



## Admission arrangements

### Reception

Children enter the Reception class in the September following their 4th birthday. Applications should be made to the local authority – Stockton Borough Council - during the autumn term before they are due to start. An application letter will be sent to you directly from the local authority. Once your child's place has been confirmed you will receive a letter inviting you into school to meet your child's class teacher and find out more about how we work in Reception.

Typically, towards the end of the Summer term your child will be invited to attend a number of sessions in Reception in preparation for starting school in September. You and your child will also have some opportunities to come into school together for a range of experiences.



## **What do the children learn?**

The curriculum is guided by the national EYFS framework which sets the standards to make sure that children aged from birth to 5 learn and develop well and are kept healthy and safe.

The framework is for all Ofsted registered early years providers in all settings, including:

- \*Nurseries
- \*Childminders
- \*Pre-schools
- \*Reception classes

The framework was updated in 2021 and as an early adopter school we had time from 2020 to make the adjustments necessary for our children to access a great offer! It promotes teaching and learning to ensure children's 'school readiness' and gives children the broad range of knowledge and skills that provide the right foundation for good future progress through school and life.

The EYFS seeks to provide:

- Quality and consistency in all early years settings, so that every child makes good progress and no child gets left behind
- A secure foundation through planning for the learning and development of each individual child, and assessing and reviewing what they have learned regularly
- Partnership working between practitioners and with parents and/or carers
- Equality of opportunity and anti-discriminatory practice, ensuring that every child is included and supported

The EYFS specifies requirements for learning and development and for safeguarding children and promoting their welfare.

The learning and development requirements cover:

- \*The areas of learning and development which must shape activities and experiences (educational programmes) for children in all early years settings
- The early learning goals that providers must help children work towards (the knowledge, skills and understanding children should have at the end of the academic year in which they turn five)
- Assessment arrangements for measuring progress (and requirements for reporting to parents and/or carers).

The safeguarding and welfare requirements cover the steps that providers must take to keep children safe and promote their welfare.

## \*The areas of learning and development

There are seven areas of learning and development that must shape educational programmes in early year's settings. All areas of learning and development are important and inter-connected.

Three areas are particularly important for building a foundation for igniting children's curiosity and enthusiasm for learning, forming relationships and thriving.

These are the **prime areas**:

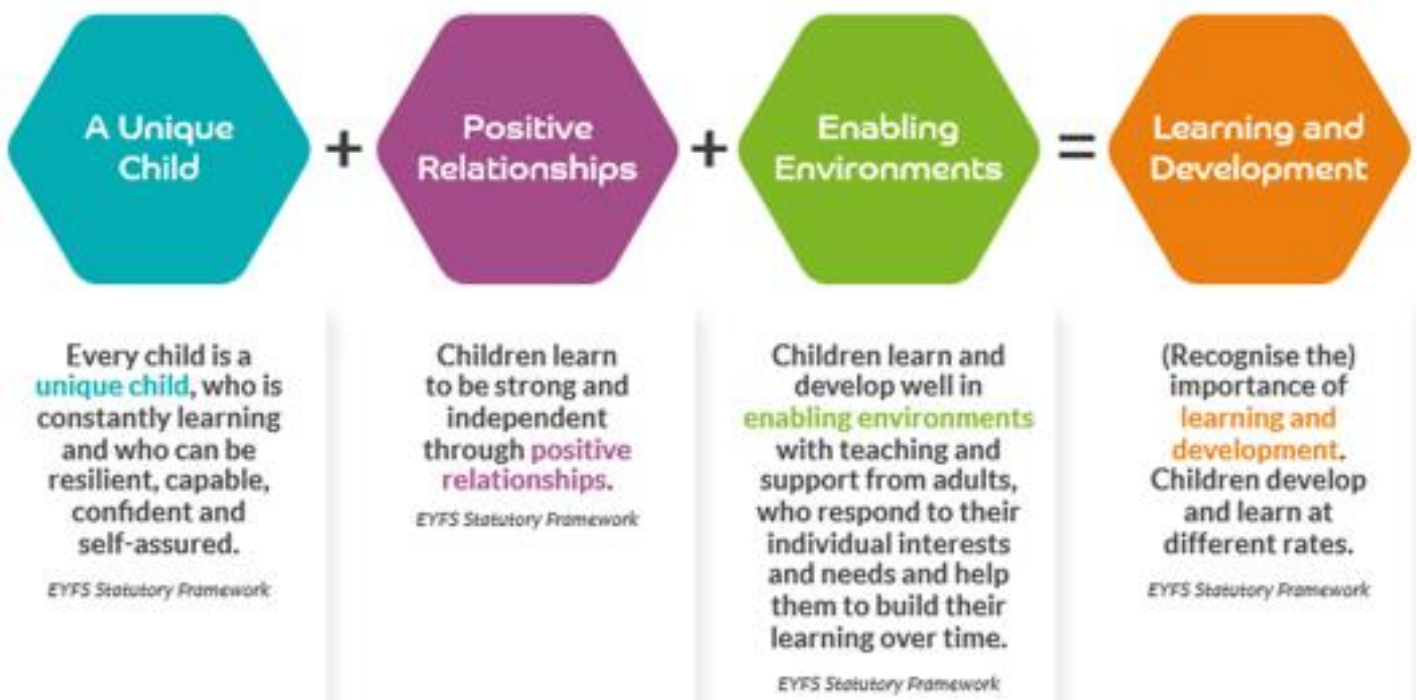
- Communication and language
- Physical development
- Personal, social and emotional development

Providers must also support children in four specific areas, through which the three prime areas are strengthened and applied.

The **specific areas** are:

- Literacy
- Mathematics
- Understanding the world
- Expressive arts and design

### Principles of Early Years education



## School Times

### Reception

Currently the school gates are open from 8.50am, when children and parents can enter the site and make their way to the Reception entrance. The register is taken from 8.55am and the gates locked at 9.00am

There is a fifteen-minute playtime during the morning session Lunchtime is 11.45am – 12.45pm

The afternoon session includes a short playtime and ends at 3.30pm.

Children enter and exit school via the Reception entrance. At home time the children are delivered to the adult who is waiting for them. Please notify us if the usual arrangement changes so that we can ensure children are safe.

### Absence

It has been well researched and evidenced that high levels of absence impact significantly on children's learning. We will endeavour to support any family who are having difficulties in meeting the expected high expectations around absence. Any concerns should be discussed with the Principal at the earliest opportunity - we can often signpost families to services or offer support in a practical way...

We ask that parents inform us as to why their child is away from school either by telephoning us or e-mailing [yarm@yarmprimary.org.uk](mailto:yarm@yarmprimary.org.uk)

To comply with Government legislation we have to record an absence for which we have received no notification as an 'Unauthorised Absence' and these are recorded on a child's annual report.



## Food and drink

All children are provided with a free piece of fruit or vegetable each day as part of the Government School scheme. The children in Nursery are also offered a drink of milk as well as having access to water. Children in Reception are encouraged to bring in their own water bottle, containing water only - in line with the rest of the school. As with all items bought from home we ask that you label clearly and take home regularly to be cleaned... All children from Reception up to and including Year 2, are entitled to a free lunch at school, as part of the Government universal free meals for infant's scheme. Since September 2021 the meals are planned and delivered through the Trust and are receiving great feedback from the children. Sample menus are available on the website and you can pre-order your child's choices. Please let us know if your child has any allergies, so that we can accommodate their needs.

WEEK 1	GREEN MONDAY	TUESDAY	WEDNESDAY	THURSDAY	FRIDAY
<b>Main Meal</b>	Vegetarian Fingers served with baby New Potatoes	Turkey Falafel served with Mexican Colelaw and Rainbow Rice	Roast Garamon and Stuffing served with Roast Potatoes and Gravy	Bacon Carbonara served with Garlic Bread	Traditional Fish Cake or Salmon Fish Cake served with Chips
<b>Vegetarian Main Course</b>	Cheese and Tomato Pizza served with Baby New Potatoes	Savoy Cabbage & Mashed Swede	Gardeners Pie served with Roast potatoes and Gravy	Chunky Vegetable Pasta Bake served with Garlic Bread	Garden Peas & Baked Beans
<b>Vegetables</b>	Peas & Sweetcorn	Jam Tart Or Fruit Kebabs	Broccoli & Baton Carrots	Sweetcorn & Peas	Chocolate Fudge Crinkle Biscuit Or Fruit Boat
<b>Dessert</b>	Carrot Cake Or Fruit Pot	Pasta Kitchen	Ice cream Or Fruit Boat	Apple Flapjack Or Fruit Pot	Pasta Kitchen
<b>Selector 1 Street Food (KS2)</b>	Pasta Kitchen	Brunch Wrap	Pasta Kitchen	Pasta Kitchen	Pasta Kitchen

Fresh Baked Jacket Potato with Choice of fillings Cheese, Tuna, Beans available daily

Selection of freshly made sandwiches on a choice of breads available daily

Fresh Bread, Cheese & Crackers, Salad Selection, Fresh Fruit and Yoghurts available daily

WEEK 2	GREEN MONDAY	TUESDAY	WEDNESDAY	THURSDAY	FRIDAY
<b>Main Meal</b>	Green Cuisine Meatballs and Spaghetti in Homemade Tomato Sauce	Homemade Ham and Pineapple Pizza Served with Wedges	Roast Chicken served with Mashed Potatoes and Rich Gravy	Minced Beef Lasagne Served with Garlic Bread	Gluten Free Fish Served with Chips and a slice of Lemon
<b>Vegetarian Main Course</b>	Cheese Whirl served with New Potatoes	Vegetable Spaghetti Bolognaise with Garlic Bread	Quorn Fillet served with Roast Potatoes and Gravy	Vegetable Curry Served with 50/50 Rice	Lightly Spiced Burger Served with Salad and Chips
<b>Vegetables</b>	Carrot rings & Peas	Sweetcorn & Carrot batons	Broccoli & White cabbage	Green beans & Sweetcorn	Garden Peas & Beans
<b>Dessert</b>	Marble Sponge and Custard OR Fruit pot	Peaches and Cream Or	Fruity Flapjack Or	Apple Crumble and Custard Or Fruit Pots	Fruit Jelly and Ice Cream Or Fruit Boat
<b>Selector 1 Street Food (KS2)</b>	Pasta Kitchen	Fruit Kebabs Pasta Kitchen	Fruit Boat Pasta Kitchen	Jacket potato topped with Bolognaise and Grated Cheese	Pasta Kitchen

Fresh Baked Jacket Potato with Choice of fillings Cheese, Tuna, Beans available daily

Selection of freshly made sandwiches on a choice of breads available daily

Fresh Bread, Cheese & Crackers, Salad Selection, Fresh Fruit and Yoghurts available daily

WEEK 3	GREEN MONDAY	TUESDAY	WEDNESDAY	THURSDAY	FRIDAY
<b>Main Meal</b>	Meatless Meatballs with Spaghetti in a Tomato Sauce	Sausage and Creamy Mash with Gravy	Roast Turkey, Roasted Baby Potatoes served with Rich Gravy	Homemade Chicken Curry with Basmati Rice	Fish Fingers served with Chips
<b>Vegetarian Main Course</b>	Homemade Cheese and Tomato Pizza served with Potato Wedges	Tomato and Basil Penne Pasta served with Garlic Bread	Macaroni Cheese	Vegetable Chilli served with Basmati Rice	Vegetable Fingers served with Chips
<b>Vegetables</b>	Peas & Sweetcorn	Savoy Cabbage & Mashed Swede	Broccoli & Baton Carrots	Sweetcorn & Cauliflower	Garden Peas & Baked Beans
<b>Dessert</b>	Chocolate Muffins Or	Jelly Or	Orange Shortcake Biscuit Or	Lemon Drizzle Cake Or	Cherry Flapjack Or
<b>Selector 1 Street Food (KS2)</b>	Fruit pot Pasta kitchen	Fruit Kebab Pasta Kitchen	Fruit Boat Pasta Kitchen	Fruit Pot Pasta Kitchen	Fruit Boat Pasta Kitchen

Fresh Baked Jacket Potato with Choice of fillings Cheese, Tuna, Beans available daily

Selection of freshly made sandwiches on a choice of breads available daily

Fresh Bread, Cheese & Crackers, Salad Selection, Fresh Fruit and Yoghurts available daily

## **Communication**

Effective communication is vital to a strong home/school partnership. We have introduced a Trust wide system - MCAS – through which we have circulate important information. Each child also has a 'dojo' account through which homework etc. can be shared and great news given! Details about how these accounts work will be shared on induction and rely on accurate contact details; so please ensure you let us know if you change yours! We will always get messages shared with the main school office via – 01642782731 OR [yarm@yarmprimary.org.uk](mailto:yarm@yarmprimary.org.uk) and are very happy to meet with you directly via prior arrangement.

AND staff are always at the gate for drop off and at the door for drop off and collection, if you want to share some information or seek some reassurance or clarification around a particular matter. Every half term knowledge organiser are shared, so that you know some of the context for learning, and there are monthly news letters to celebrate what is happening in school and inform around what is to come.

There is more information on the school website; including a record of some of the things which the children are involved in, via X.

## **Payments**

We are a cashless school. Payments for all items including trips, lunches, YPC (Yarm Primary Club – Breakfast/after school) and other activities are processed via the online system MCAS. When your child is ready to start school we will send you an email link to register your account.





## Uniform

One of the impacts of the pandemic has been the adaptations we had to make around our uniform. We found these to be positive in supporting high levels of activity and safety during playtimes, PE lessons and general activity in the school day.

We have a basic uniform, which we encourage all pupils to wear.

Many parents find that the uniform is a practical option and even Nursery children are more typically wearing uniform – particularly the royal blue school jumper.

Please clearly label all clothing, footwear, coats, school bags and lunchboxes.

The basic items listed below can usually be obtained from a variety of shops and supermarkets at very competitive prices and DO NOT have to have a school logo. However, if you wish to purchase clothing with the school logo these are available directly from 'Motif8'. [www.motif8.co.uk](http://www.motif8.co.uk) Tel: 01642 601 501. Other outlets may be available.

During the school year we will hold swap shops, where parents can bring used uniform in and take other pre-loved uniform home – these are typically in the Spring & Summer terms.

We encourage:

Black/grey/navy blue trousers/joggers/leggings

White/pale blue/navy blue polo shirt

Royal blue sweat shirt/ cardigan

Footwear is the crucial element and should be safe for an active school day – appropriate trainers are advised.

## **Jewellery**

Jewellery is not encouraged in school as it can easily be lost or damaged, and occasionally lead to accidents. Our expectation is that jewellery should not be worn during PE. Smart watches are not advised at school, as they present challenges within our safeguarding policy, which young children may find difficult to understand and comply with.



A child's growth, development and learning are interrelated in complex ways from the moment of conception all the way through infancy to early childhood and beyond. Experiences during the early years strongly influence a child's future development, as development and learning build on what has already been acquired. There is an emphasis on the unique child, which we take very seriously, as it is by knowing your child, their strengths, challenges and character, which allows us to meet their needs and support their progress.

As you are the experts on your child the partnership between home and school is vital in securing success.

We will provide materials and opportunities to develop understanding around learning and the curriculum, however, if there is ever anything you need for us to explain or develop with you we are more than happy to do so. We are working on improving communication and authentic shared learning opportunities following the pandemic and welcome your feedback.

We look forward to many years of working together in supporting your child.

Education is not  
preparation for life;  
education is life itself.

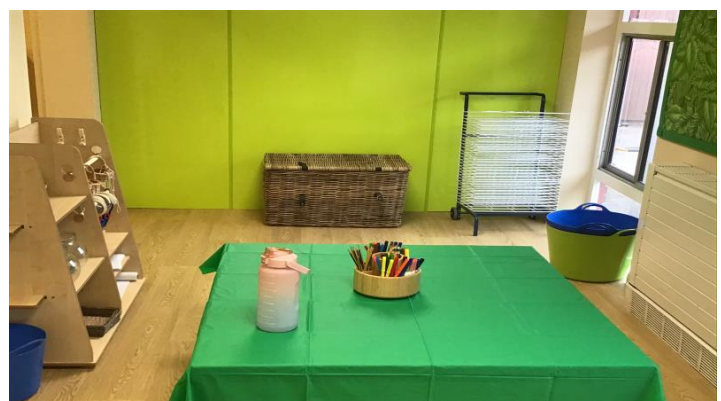
John Dewey

Around here, we don't look  
backwards for very long... We  
keep moving forward, opening  
up new doors and doing new  
things because we're curious...  
and curiosity keeps leading us  
down new paths.

Walt Disney

Education is the most powerful  
weapon which you can use to  
change the world.

Nelson Mandela



Why not arrange an appointment to  
come along and visit us...

... you would be most welcome.

