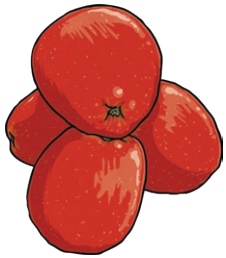


Clue for Digit 1

Put these foods and drinks into their groups. How many food groups are represented in this list?

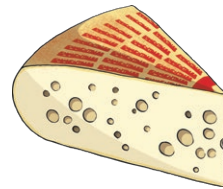
apple



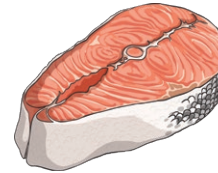
lamb



cheese



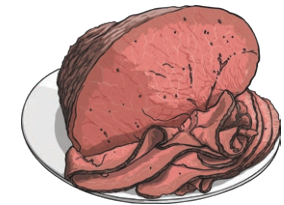
salmon



milk



beef



grapes



yoghurt



tuna



broccoli



cucumber



sweetcorn



The number of food groups is the first digit on the keypad.

Clue for Digit 2

Match up the food group with the job it does. You will find there is one food group left over.

protein

gives us energy

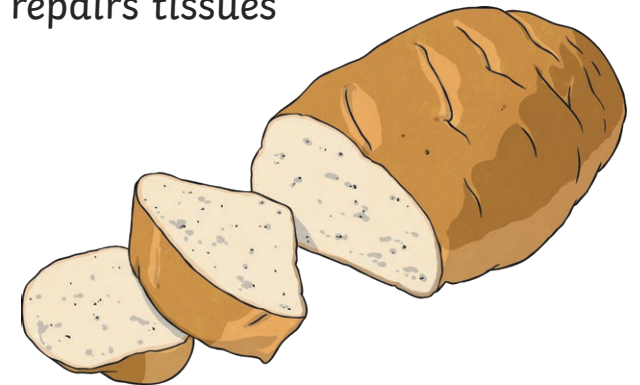
carbohydrates

moves nutrients around and clears waste

fibre

builds and repairs tissues

vitamins

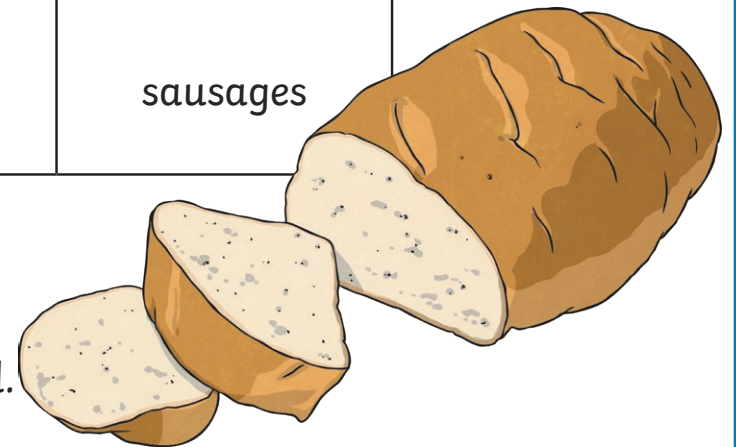


The number of letters in the name of the food group left over is the second digit on the keypad.

Clue for Digit 3

Which of the foods listed are dairy?

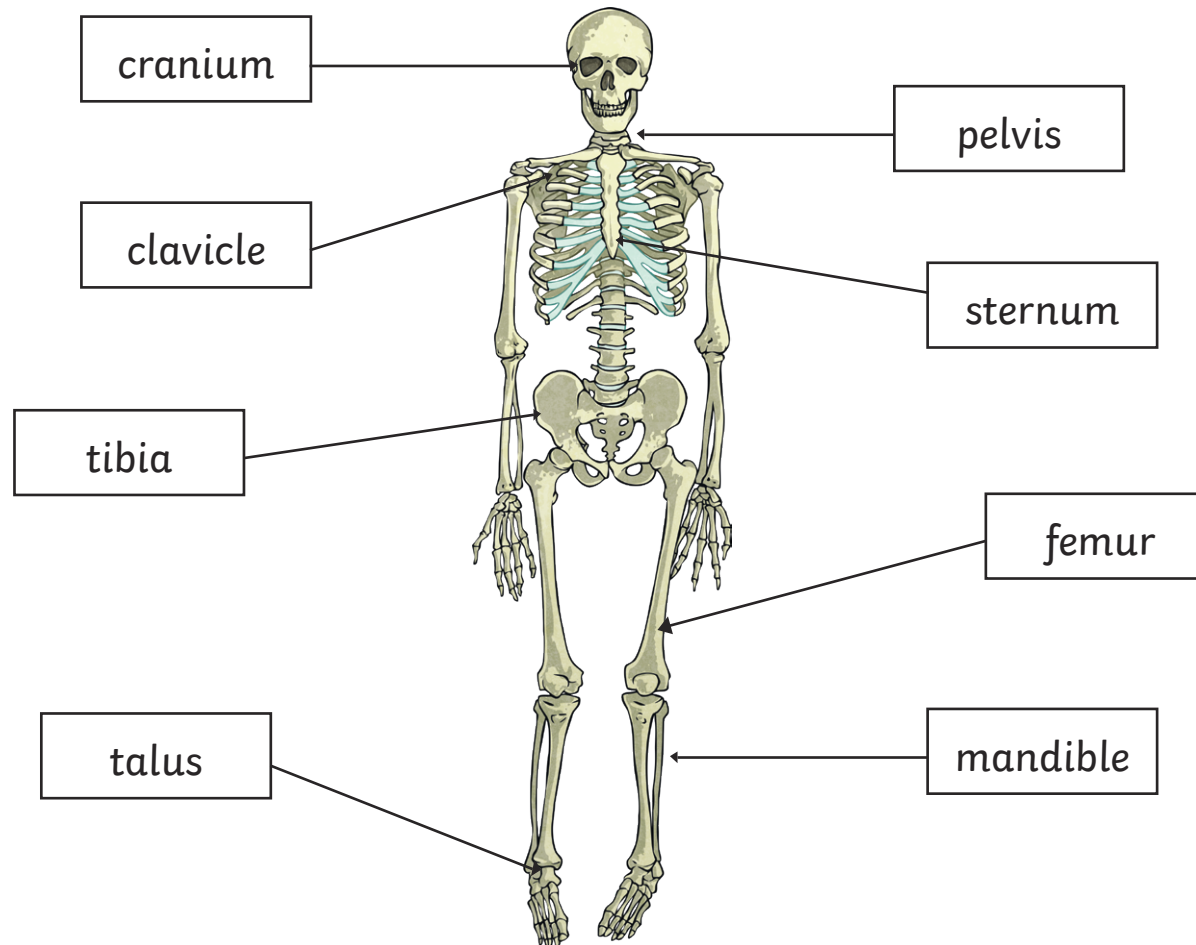
oranges	beef	cottage cheese	rice
butter	carrots	bread	yoghurt
bananas	donuts	cream	cheese
nuts	milk	pasta	sausages



The number of dairy products listed is the third digit on the keypad.

Clue for Digit 4

How many of the labels on this human skeleton are incorrect?



The number of incorrect labels on the skeleton is the fourth digit on the keypad.

Clue for Digit 5

Answer these clues; the highlighted squares spell the digit you need.

The long bone in the upper arm.

--	--	--	--	--	--	--

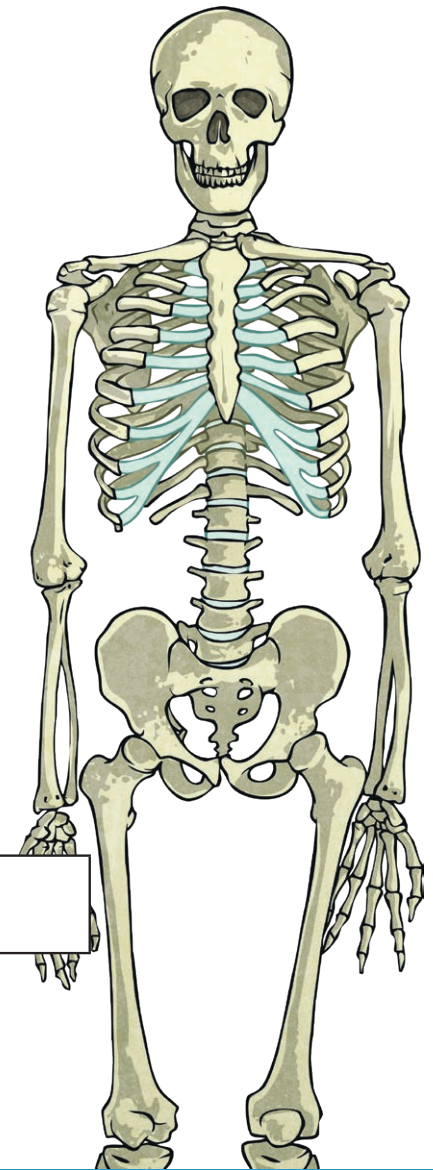
Another name for kneecap.

--	--	--	--	--	--	--

The spinal column is made up of these.

--	--	--	--	--	--	--	--	--

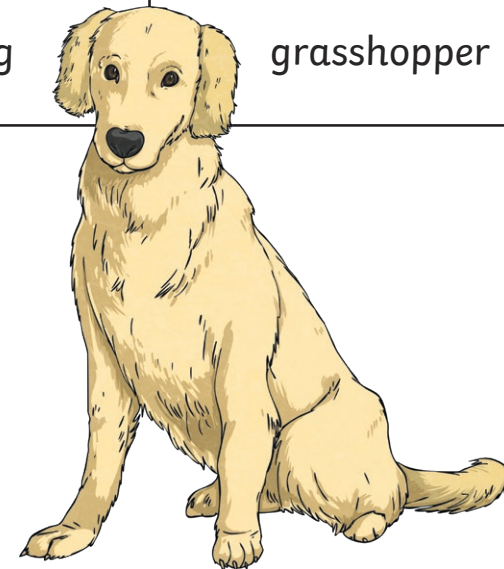
Rearrange the letters in the shaded boxes to spell the fifth digit on the keypad.



Clue for Digit 6

How many of these animals are invertebrates?

jellyfish	dog	cat	earthworm
hamster	tarantula	dolphin	snail
blue whale	slug	guinea pig	grasshopper



The number of invertebrates is the next number on the keypad.

Clue for Digit 7

How many of following statements are true?

Exoskeletons are on the inside of the body.
Exoskeletons do not grow with the animal.
Humans have an endoskeleton.
All animals with hydrostatic skeletons are vertebrates.
Invertebrates can be divided into two groups: those with an exoskeleton and those with a hydrostatic skeleton.
As the animal with an endoskeleton grows so does their skeleton.
Endoskeletons are on the outside of the body.



The number of true statements will give you the seventh digit on the keypad.

Clue for Digit 8

Which of the following statements is not true?

1	Muscles contract and relax to cause movement.
2	Muscle movement can be voluntary and involuntary.
3	Muscles work in pairs.
4	We do not need muscles to move.
5	There are three main types of muscles.
6	There are over 650 muscles in the human body.

The number of the incorrect statement will give you the eighth digit on the keypad.