

Zouch Academy

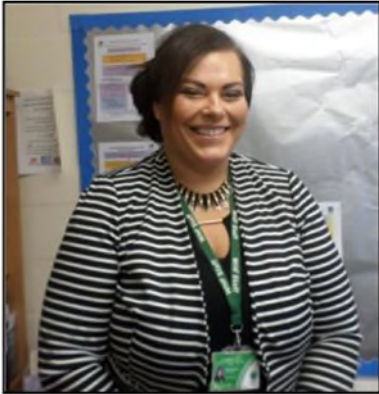


**Welcome to
Nursery**

A very warm welcome to you and your child!

Starting nursery is a new and exciting time for you and your child and we hope this is the beginning of a long and happy association with Zouch Academy.

This booklet provides you with some general information about our nursery provision.



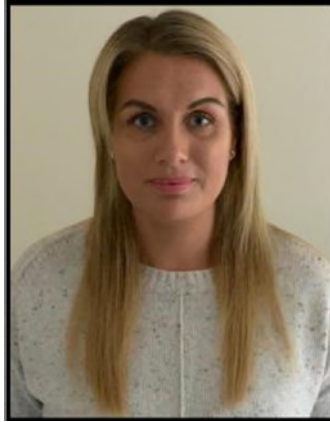
Mrs Johnson
is our Principal



Mr Morris
is our Vice Principal

Organisation

Our nursery class is called Duckling class and I am delighted to be teaching your child this year.



Mrs Griffiths is our Nursery Manager

Our Early Years practitioners; Mrs Chalk-Pope, Mrs Enright and Mrs Osbourne will also be teaching in the nursery.



Nursery session times

We are open term time only and our sessions are as follows:

Morning session 8.45am - 11.45pm.

Afternoon Session 12.15pm - 3.15pm.

Lunchtime **11.45am - 12.15pm £2.00 per session supervision fee payable via Parentpay.**

Please note that the lunch time fee will be payable even if your child is absent from nursery due to illness as we have to ensure that staff ratios remain correct.

For your child to get the most from our nursery provision we expect to see them in on time and every day as one of our expectations.

Home time

Your child's safety is really important to us so please let us know if anyone else is collecting your child. You can tell a member of staff at the start of the session or telephone the office if collection arrangements change during the day.

Please be aware that we will not let a child leave our care with any other adults before we have had your authorisation.

Routines

When you arrive for your session at nursery please can you:

- Encourage your child to hang their coat on their peg.
- Help them to find their name and place it on the self-registration board.
- Settle them at an activity and then say good-byes.

Snack Time



During each session the children have a healthy snack consisting of milk or water and fruit or vegetables, etc. Please advise staff if your child has any allergies. We ask for a contribution of a £1.00 a week (£12.00 a term) towards







the cost of snack. This can be paid termly via ParentPay our online system at the start of a new term.

Staying for Lunch

A healthy lunch every day will give your child the energy and nutrients they need to grow, develop and learn. As part of our commitment to becoming a Healthy School we would ask for your support by providing your child with a packed lunch that is healthy, balanced and nutritious.

A healthy packed lunch should include food from the following 4 food groups:

	Starchy food such as bread, potatoes, rice, pasta – these foods provide carbohydrate to give your child energy for the afternoon.
	Fruit and vegetables – these foods provide vitamins and minerals to help protect against illness.
	Meat, fish, eggs, beans and other non-dairy sources of protein – these foods provide protein, iron and zinc to help your child grow.
	Milk and dairy foods – these foods are a good source of calcium, for strong bones and teeth.

Fizzy drinks, sweets, chocolate spread and nuts are not permitted.

What to Wear

Play and exploration is an important part of the provision in our nursery and some of the activities that are provided can be messy!!

Aprons are provided for these types of activities but we ask that your child comes to nursery dressed in clothes that can be easily washed and that you are happy to get dirty.

Nursery children do not have to wear school uniform, but they can if you prefer. Uniform can be ordered from: www.schooltrends.co.uk

Children should wear the correct footwear to nursery to ensure they are safe. Jewellery should not be worn in school.

Toileting

We would prefer your child to be toilet trained when they start nursery allowing staff to devote their time to interacting with your child within the learning environment. However, we do recognise that Special Educational Needs or medical conditions may affect this and should be discussed with the nursery teacher. If your child does have to wear nappies or pull ups, please provide spares.

We understand that accidents do happen so please can you send a complete change of clothes for your child to be kept in a bag on their peg in nursery.

PLEASE LABEL ALL ITEMS OF CLOTHING WITH YOUR CHILD'S NAME!

Teaching and Learning in Nursery

The Early Years curriculum consists of 'prime' and 'specific' areas and your child will engage in a variety of fun and playful activities carefully planned to support their learning and development across seven areas of learning (see enclosed EYFS Curriculum hand-out for more information).

Characteristics of Effective Learning are really important as they tell us how your child learns. These are:

- Playing and Exploring – Engagement**
- Active Learning – Motivation**
- Creating and Thinking Critically – Thinking**

Prime Areas:- These are fundamental and support development in all other areas.

- **Personal, social and emotional development**
- **Physical development**
- **Communication and language**

Specific Areas:- These grow out of the prime areas and include essential skills and knowledge.

- **Literacy**
- **Mathematics**
- **Understanding the world**
- **Expressive arts and design**

Throughout the week your child will be taught as a whole class and in small groups with their teacher or teaching assistant or 1:1. They will work independently to and will have lots of opportunities for child-initiated learning both inside and outside -whatever the weather.



Assessment

At Zouch Academy we use 'Tapestry' to record and document your child's learning journey. Teachers make regular observations and assessments of your child, using

Development Matters to record their stage of development and progress. As we all know learning doesn't just take place in nursery and Tapestry allows parents to upload photos and videos of your child's 'Wow' moments that happen out of school.

Your child will be assigned to a key person during their time in nursery who will be the person who you can talk to if you have any worries about your child.

However, please do not hesitate to talk to any member of the nursery team if any concerns.

Forest School

Mrs Batson is our Forest School leader and she takes the children for regular Forest School sessions. Please can you provide the following items for Forest school to be kept in nursery at all times:

Forest School



- Waterproof coat
- Wellies

Safeguarding and our duty of care

In order to ensure the safety of all children in our care, we are required to follow the Safeguarding Procedures as agreed by the Local Education Authority. We will endeavour to share with parents/guardians any concerns we may have regarding any injuries noted or other specific issues regarding the welfare of their child. We will keep a record of any concerns raised and will share them with the parents/guardians if it is appropriate to do so. We do have a duty to refer to M.A.S.H. (Multi-Agency Safeguarding Hub) if we suspect a child is at risk of significant harm. If we make a referral to M.A.S.H. we will inform the parents/guardians concerned; unless to do so would place the child at increased risk of significant harm. Our first concern will always be the welfare of the child. We have a copy of the Wiltshire Safeguarding Procedures and Guidance in the office if you wish to see it.

- **Mrs Nina Johnson**
Designated Safeguarding Lead
- **Mrs Jackie Udale and Mr Morris**
Deputy Safeguarding Lead
- **Mr Chris Chapman**
Chair of Governors with responsibility for Safeguarding

The Pastoral Team at Zouch

Inclusion Manager

Mrs Udale manages our SEND provision and provides support and advice to both parents and teaching staff around all issues of inclusion and attendance.



Emotional Literacy Support Assistant

Mrs Clark is our ELSA and provides our children, from Reception to Years 6, with specialist support for a wide range of issues including social and emotional difficulties, bereavement, self-esteem and friendship worries.



Family Support Worker

Michelle Pelling is our Family Support Worker providing a friendly link between home and school. She offers support on a wide range of topics including parenting, behaviour and emotional issues and attendance difficulties.

Michelle holds regular coffee mornings throughout the year.

Volunteering

If you have a particular skill or interest that you would like to share within our school community, then we would love to hear from you. Perhaps you would like to volunteer to come into school to hear children read or you would be interested in becoming a member of our Local Governing Board. Please speak to your child's class teacher or the school office and we can advise you further.

If you require any further information, please don't hesitate to talk to a member of the school staff.

You can contact them in the following ways:

Wavell Road,
Tidworth,
SP9 7JF
Telephone: 01980 842293
admin@zouch.wilts.sch.uk

or visit our website:
zouch-academy.twhf.org.uk

We look forward to your child joining our school and developing a long and supportive partnership with you.

